

M-17

M-22

H-04

M-16

H-03

M-15

M-20

H-02

Mohler View Farmstead, Ltd.
OR.0247-1119 11/21/2013
100.76 ac.
1400447000

T9 R8 1st Qtr
Lot 14

T9 R8 1st Qtr
Lot 1

L Lavonne UNI, Trustee
OR.0177-2325 1/14/2005
OR.0252-2784 7/10/2015
75.079 ac.
1400452000

Elizabeth A. Long, Trustee
OR.038-4994 2/29/2024
24.821 ac. p.018-0275
140042001

T9 R8 4th Qtr
Lot 2

T9 R8 4th Qtr
Lot 1

Larry C. Plar, Trustee
Lynn L. Plar, Trustee
OR.0262-2347 12/11/2017
75.821 ac.
1400080000

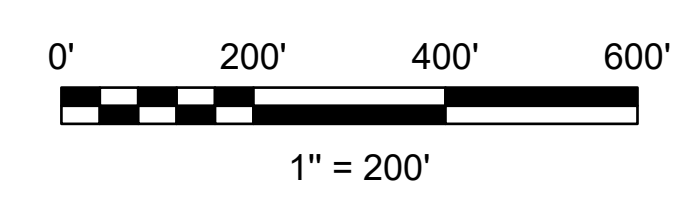
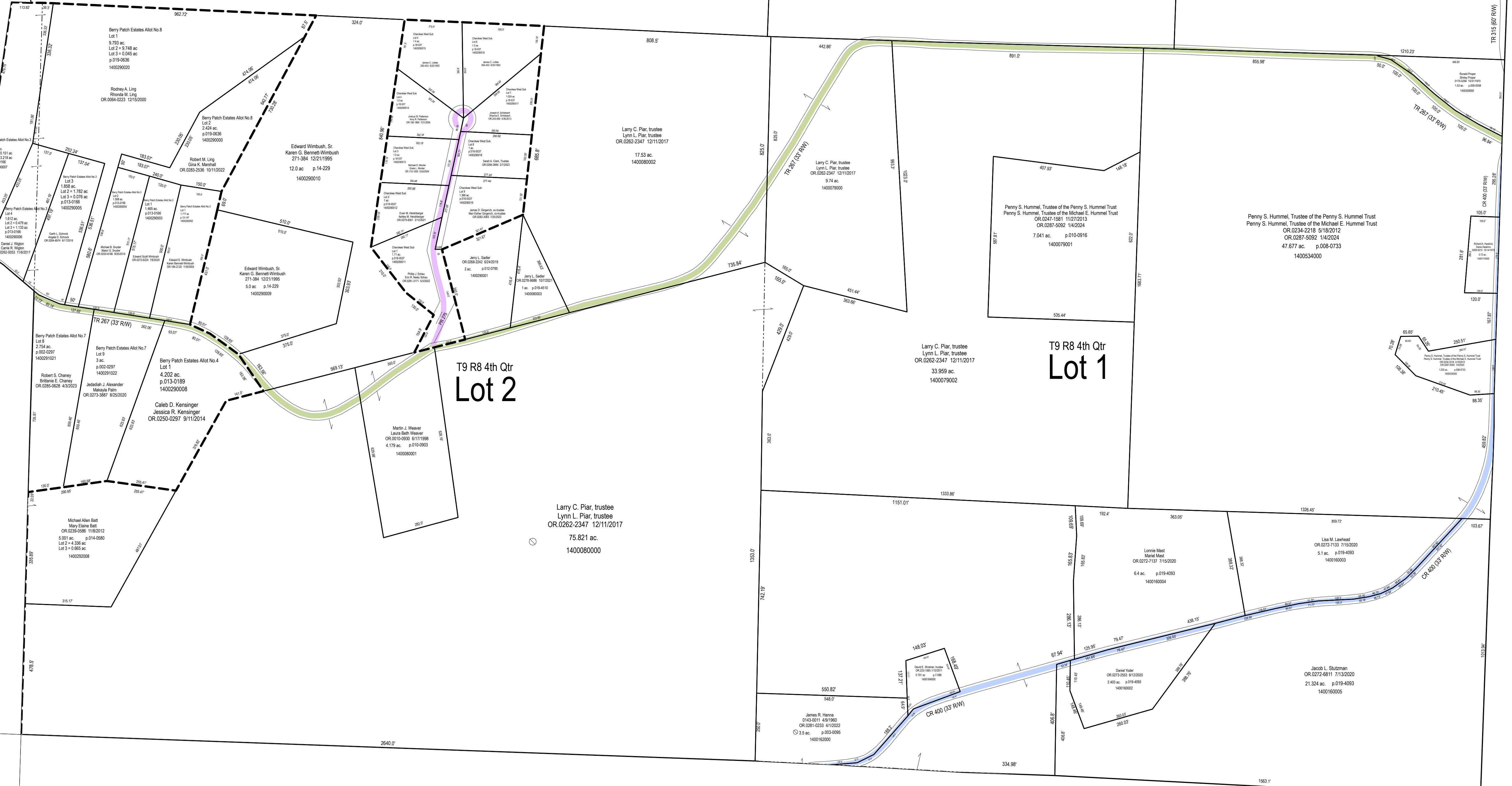
Larry C. Plar, Trustee
Lynn L. Plar, Trustee
OR.0262-2347 12/11/2017
11.53 ac.
140098002

Larry C. Plar, Trustee
Lynn L. Plar, Trustee
OR.0262-2347 12/11/2017
9.13 ac.
140079000

Perry S. Hummel, Trustee of the Perry S. Hummel Trust
Perry S. Hummel, Trustee of the Michael E. Hummel Trust
OR.0247-1581 11/22/2013
OR.0267-5292 14/02/24
7.041 ac. p.010-0916
1400079001

Perry S. Hummel, Trustee of the Perry S. Hummel Trust
Perry S. Hummel, Trustee of the Michael E. Hummel Trust
OR.0247-1581 11/22/2013
OR.0267-5292 14/02/24
47.677 ac. p.008-0733
1400634000

Larry C. Plar, Trustee
Lynn L. Plar, Trustee
OR.0262-2347 12/11/2017
33.959 ac.
1400079002



LET IT BE KNOWN, THIS MAP HAS BEEN PREPARED AS A REFERENCE GUIDE TO PROPERTY OWNERSHIP. WE BELIEVE THIS INFORMATION TO BE CORRECT AND CURRENT, HOWEVER IT IS NOT INTENDED FOR ANY LEGAL USE, WHETHER IT BE SALES, TRANSFERS, TRADES, LEASES OF ANY TYPE, ETC. AND DO NOT ACCEPT RESPONSIBILITY FOR ERRORS OF ANY NATURE OR OMISSIONS CONTAINED HEREIN.

S.F.T.
new survey required for next transfer

Lots 1 & 14, 1st Qtr.
Lots 1, 2 & Pt 4, 4th Q
T-9, R-8
Monroe Twp.
Holmes County, Ohio

M-21

Last Revision: 3/1/2024