

KX-13

KX-17

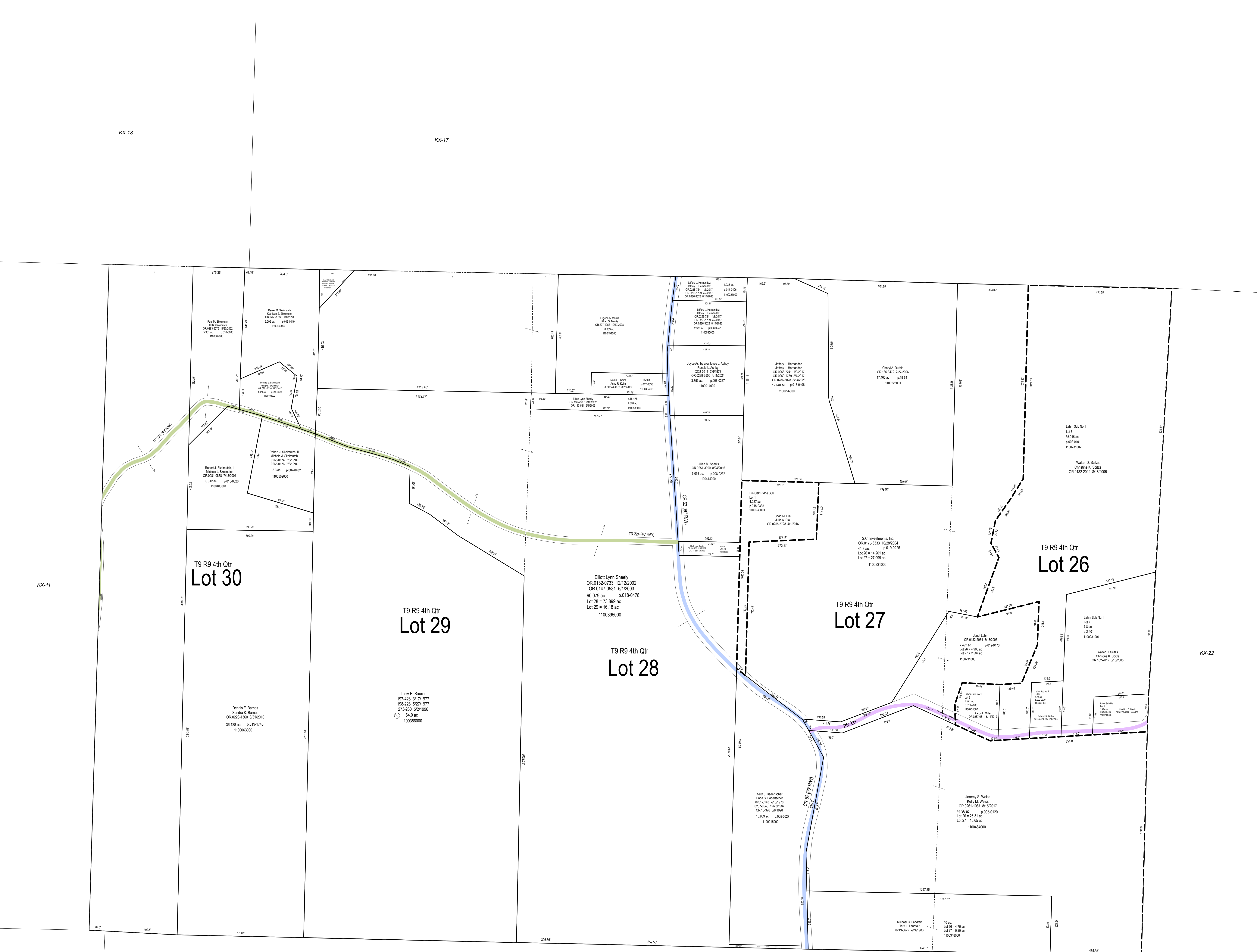
KX-11

KX-22

KX-10

KX-15

KX-21



T9 R9 4th Qtr  
Lot 30

T9 R9 4th Qtr  
Lot 29

T9 R9 4th Qtr  
Lot 28

T9 R9 4th Qtr  
Lot 27

T9 R9 4th Qtr  
Lot 26

Dennis E. Barnes  
Sandra K. Barnes  
OR 0225-1300 8/31/2010  
36.138 ac. p.019-1143  
1100063000

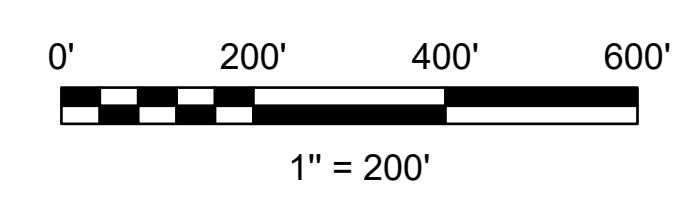
Terry E. Sawyer  
197-423 3/17/1977  
198-223 5/27/1977  
273-290 5/2/1996  
64.0 ac.  
1100386000

Elliott Lynn Sheely  
OR 0132-0733 12/12/2002  
OR 0147-0531 5/11/2003  
90.079 ac. p.018-0478  
Lot 28 = 73.899 ac  
Lot 29 = 16.18 ac  
1100395000

S.C. Investments, Inc.  
OR 0176-3333 10/20/2004  
41.3 ac. p.019-0225  
Lot 26 = 14.291 ac  
Lot 27 = 27.099 ac  
1100231006

Janet Lahn  
OR 0162-2034 8/18/2005  
7.802 ac. p.019-0473  
Lot 26 = 4.909 ac  
Lot 27 = 2.893 ac  
1100231006

Jeremy S. Weiss  
Kelly M. Weiss  
OR 0051-1007 8/15/2017  
41.86 ac. p.005-0120  
Lot 26 = 25.31 ac  
Lot 27 = 16.55 ac  
1100484000



LET IT BE KNOWN, THIS MAP HAS BEEN PREPARED AS A REFERENCE GUIDE TO PROPERTY OWNERSHIP. WE BELIEVE THIS INFORMATION TO BE CORRECT AND CURRENT, HOWEVER IT IS NOT INTENDED FOR ANY LEGAL USE, WHETHER IT BE SALES, TRANSFERS, TRADES, LEASES OF ANY TYPE, ETC. AND DO NOT ACCEPT RESPONSIBILITY FOR ERRORS OF ANY NATURE OR OMISSIONS CONTAINED HEREIN.

S.F.T.  
new survey required for next transfer

Lots 26, 27, 28, 29 & 30  
4th Qtr., T-9, R-9  
Knox Twp.  
Holmes County, Ohio

**KX-16**

Last Revision: 4/16/2024