

PR-06

PR-11

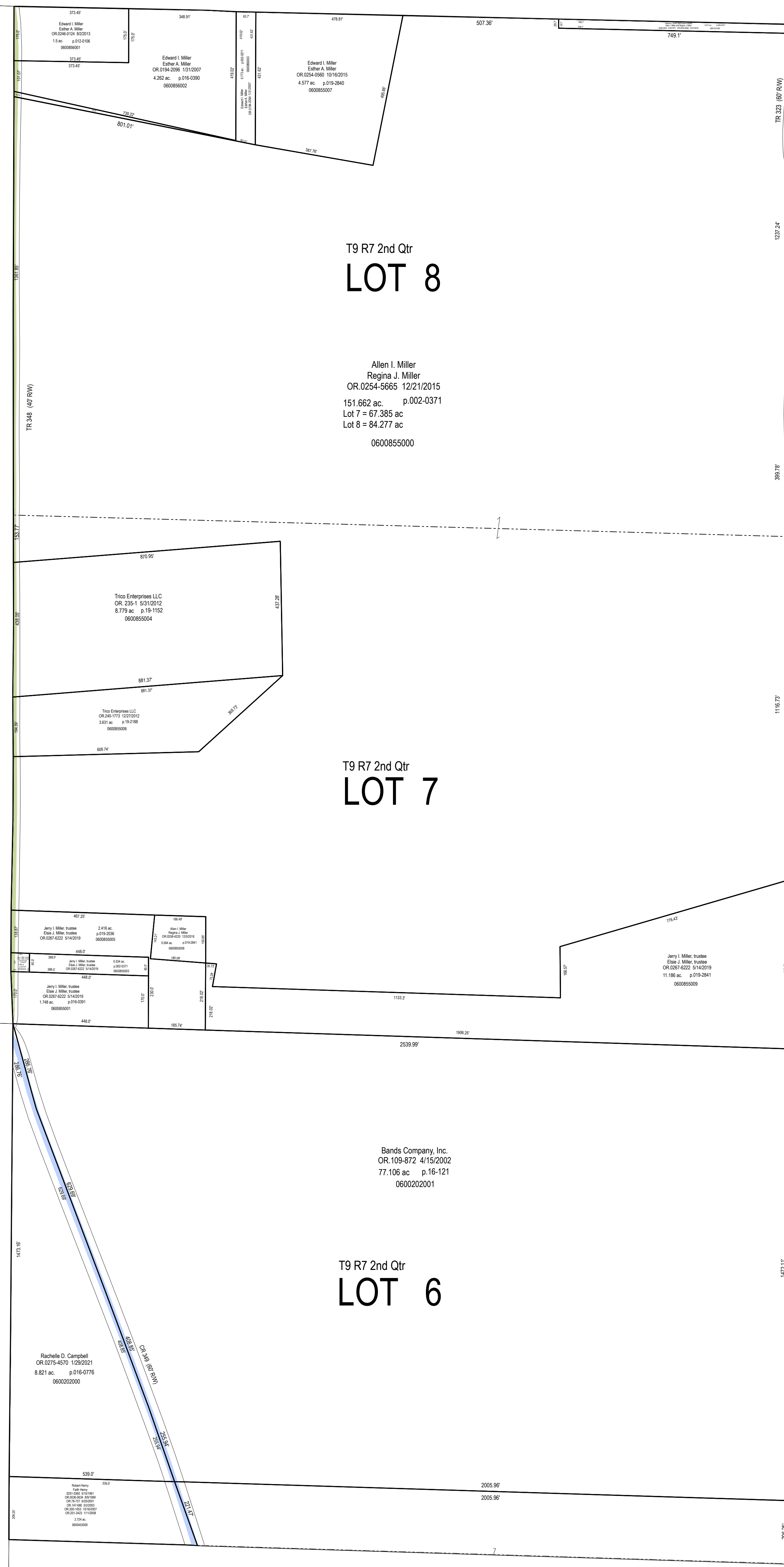
PR-16

H-12

H-17

H-11

H-16



T9 R7 2nd Qtr
LOT 8

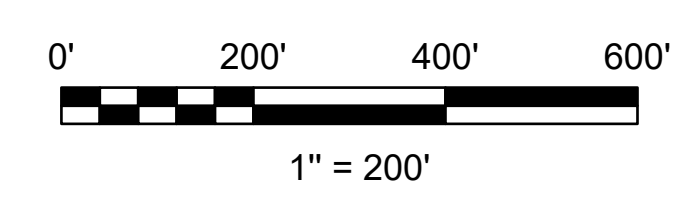
Allen I. Miller
Regina J. Miller
OR.0254-5665 12/21/2015
151.662 ac. p.002-0371
Lot 7 = 67.385 ac
Lot 8 = 84.277 ac
0600855000

T9 R7 2nd Qtr
LOT 7

T9 R7 2nd Qtr
LOT 6

Sands Company Inc.
OR.109-872 4/15/2002
77.106 ac p.16-121
0600202001

Rachael D. Campbell
OR.0275-4570 1/29/2021
8.821 ac. p.016-0776
0900202000



LET IT BE KNOWN, THIS MAP HAS BEEN PREPARED AS A REFERENCE GUIDE TO PROPERTY OWNERSHIP. WE BELIEVE THIS INFORMATION TO BE CORRECT AND CURRENT, HOWEVER IT IS NOT INTENDED FOR ANY LEGAL USE, WHETHER IT BE SALES, TRANSFERS, TRADES, LEASES OF ANY TYPE, ETC. AND DO NOT ACCEPT RESPONSIBILITY FOR ERRORS OF ANY NATURE OR OMISSIONS CONTAINED HEREIN.

S.F.T.
new survey required for next transfer



**Lots 6, 7 & 8
2nd Qtr., T-9, R-7
Hardy Twp.
Holmes County, Ohio**

H-18