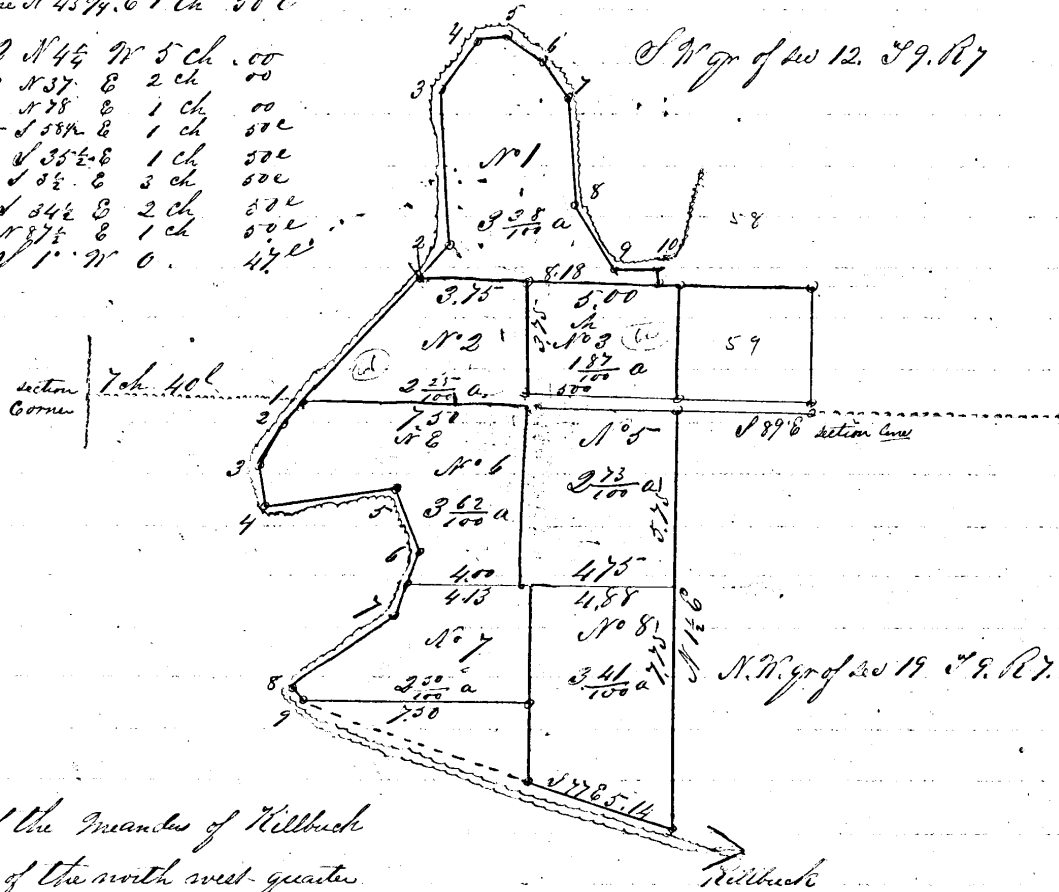


Plot of Moses Hayland's Out-lots to the town of Millersburg Ohio

Notes of the Meanders of Hillbuck on part
of the S.W. qr. of sec 12 T9. R7 commencing
on the south line thereof 7 Chains and 10 links
East of the south west corner of said qr. sec.

- Thence 1 N 43 3/4 E 5 ch & 50 links
 .. Same N 43 3/4 E 1 ch 50 l
 .. 2 N 45 N 5 ch 00
 .. 3 N 37 E 2 ch 00
 .. 4 N 78 E 1 ch 00
 .. 5 S 58 1/2 E 1 ch 50 l
 .. 6 S 35 1/2 E 1 ch 50 l
 .. 7 S 5 1/2 E 3 ch 50 l
 .. 8 S 54 1/2 E 2 ch 50 l
 .. 9 N 77 1/2 E 1 ch 50 l
 .. 10 S 1 N 0 47 l



Notes of the Meanders of Hillbuck
on part of the north west quarter
of sec 19 T9. R7 commencing on the
north line thereof 7 chains & 40 links
East of the north west corner of said qr. sec.

- Thence 1 S 43 N 1 Chain & 7 links
 2 S 32 N 1 ch 64 l
 3 S 11 E 1 ch 25 l
 4 N 84 E 4 ch 50 l
 5 S 20 E 2 ch 25 l
 6 S 21 1/2 N 1 ch 13 l
 Same S 21 1/2 N 1 ch 12 l
 7 S 56 1/2 N 4 ch 25 l
 8 S 43 1/2 E 0 14 l

Scale 5 Chains to the inch

I do hereby Certify that the above is a Correct plat of out-lots situated on the south west part of the south west quarter of section 12 in T9 of R7 and on the north west part of the north west quarter of section 19 in Township 9 of R7
 April 15th 1853
 Samuel Robinson Surveyor

Presently being recorded in this office Oct 15th AD 1853

S. P. Raiff
 Recorder