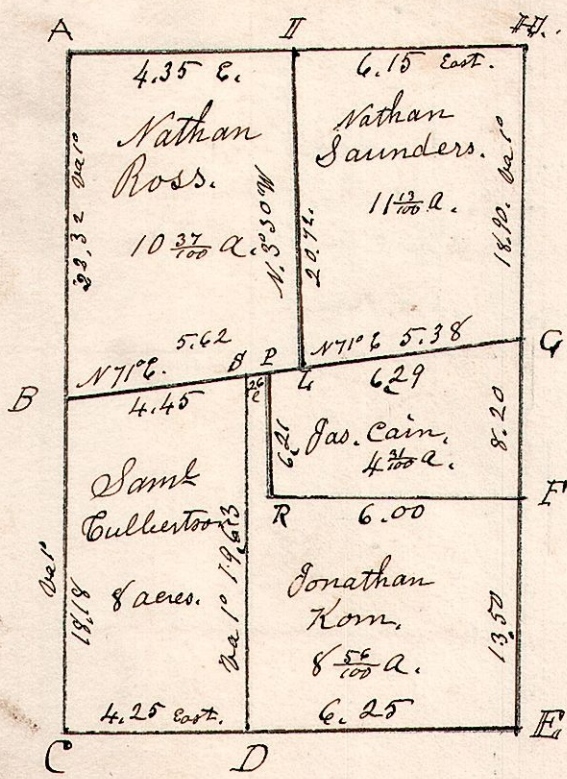


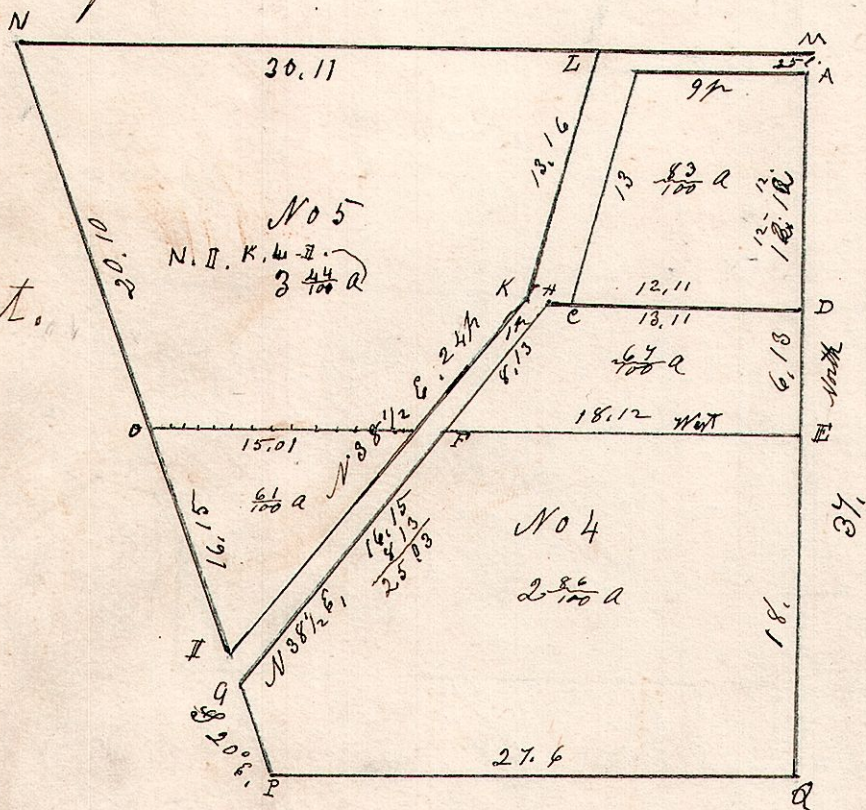
Nov 17 1828. Surveyed the west part of the S.W. q. of Section 15. in 9. of R. 7. in the following manner for the following persons.



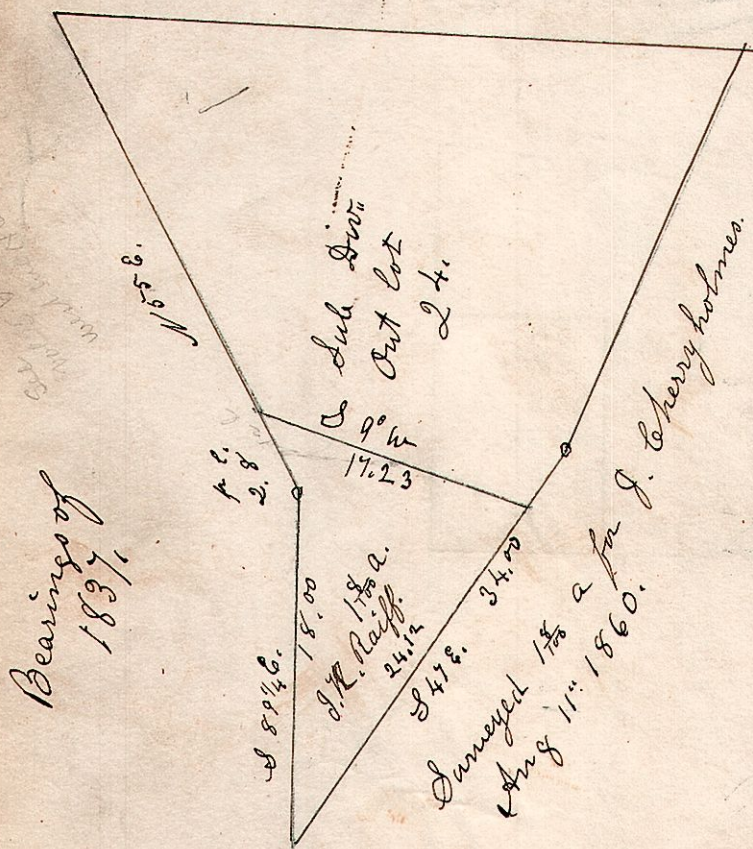
A	Beech 20 S 15 W.	45
	Beech 16 S 65 E.	5
B	Maple 16 S 39 W	18
C	Sugar 14 N 7 W	26
	do 12 S 9 W	32
D	Beech 15 S 45 E	43
E	Beech 12 N 80 W	5
F	Maple 12 West	2
G	Beech 10 S 106	17
	Lronwood 12 S 39 W	25
H	Post.	
I	W oak 20 N 35 E	32
L	Post.	
P	Post.	
S	Post.	
R	Post.	

7. 9. 47. 1/2 January 28 1841. Henry H. Becket's addition of Out lots. The following is a plat or plan of out lots No 4 & 5, situated in the N.E. pt. of lot 47 in the 1st q. 9. R. 7. of the Connecticut Western Reserve School lands in Holmes Co. O.

Henry H. Becket.



7. 9. out lot 24.



7. 9. 12. Subdivisions of Out lot.

Lots No 2, 3, 4, 5, 6, 7, 8 & 9. average 67 ft 2 in front. 127 back.

1	195	Mr. Simon	403
2	196		402
3	197		9. 203
Alley			8. 202
4	198		16 1/2 ft.
5	199		7. 201
Perkins St 49 1/2		S. H. Marchand	6. 200

SURVEY FILE see Vol. 2-255

165/0