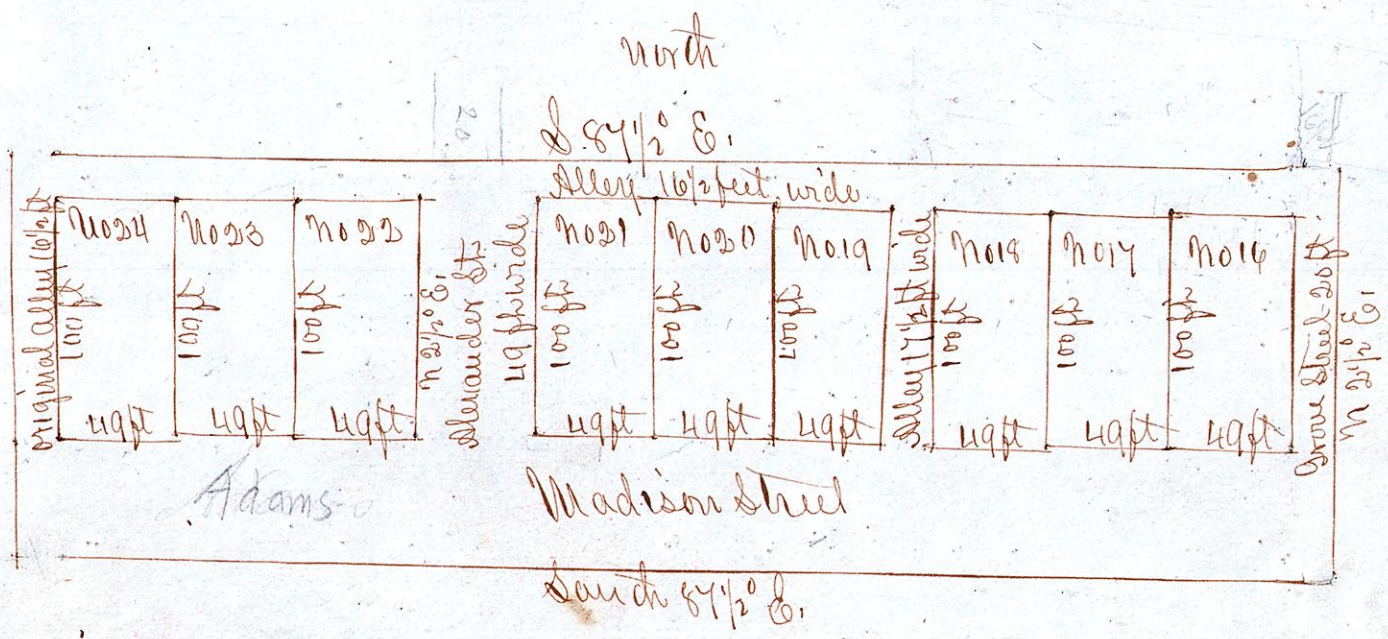


Dr A A Crump's 2^d Addition: Millersburg

Continuation of A A Crump's addition to Millersburg



Scale 80 ft to the inch

I do hereby certify that the above is a correct plat of the continuation of Dr Lot in Doctor A A Crump's addition to the town of Millersburg Holmes County Ohio as recorded Sept 8th 1867 in Plat record No 1 page 96 of Holmes County Ohio. Said lots are situated in Subdivision on Lot No 28 (South part) in the S & 7th of section 12 Township 9 Range 7 August 1st 1872.

W W Robinson
Surveyor.

Dr A A Crump, Proprietor

Received for record August 7th 1872 Recorded same day.
J M McDowell Recorder

The State of Ohio Holmes County ss

On the 7th day of August 1872 personally came A A Crump before me a Notary Public in and for said County and acknowledged himself to be the proprietor of the above platted continuation of A A Crump's addition to the town of Millersburg in said County and that the lots streets and alleys are correctly numbered & described in the above plat as certified by W W Robinson Surveyor.

A A Crump Jr.

In witness my hand and Seal of office this 7th day of August 1872
Seander Rittogland

