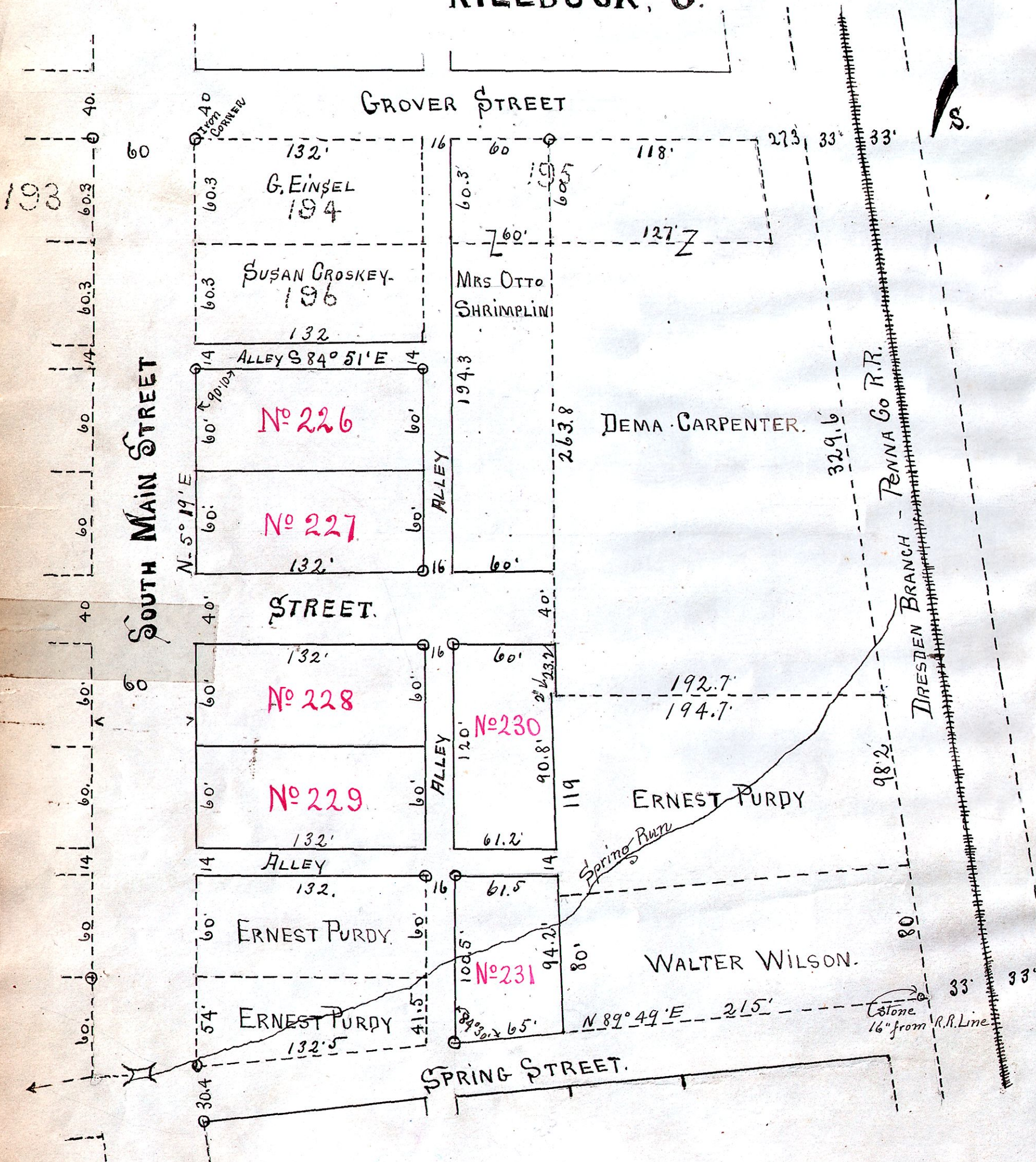


NELVA CARPENTERS ADDITION TO KILLBUCK, O.



Surveyor's Certificate

I hereby certify that this is a correct plat of in lots of Melva Carpenter's Addition to the Village of Killbuck, Ohio, situated in the Northwest Quarter of Section 15 in Township 8. in Range 7, and that the Lots, Streets and Alleys shown and that standard corners have been set as shown to make future surveys from and marked on plat by circle (o) (iron corners) as surveyed by me on March 10th 1917

In Witness Whereof, I have hereunto set my hand this 16th day of April A.D. 1917.

W.L. Reidenbach, Surveyor.

State of Ohio, Holmes County ss:

Be it remembered that on this 11th of April A.D. 1917 personally appeared Melva Carpenter before me, E.D. Buker, a Notary Public in and for said County and acknowledged that she is the owner of the land hereon platted as in lots and that said plat is true and correct and that the streets and alleys thereon shown are dedicated to public use.

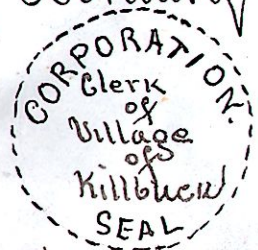
In Witness Whereof, I have hereunto set my hand and seal this 11th day of April 1917.
E.D. Buker, Notary Public.



"Acceptance"

I hereby certify that this plat of Melva Carpenter's Addition of in lots to the Village of Killbuck, Ohio has been accepted and approved by the Council of the incorporated Village of Killbuck Ohio this 4th day of February A.D. 1917.

G.W. Woods Village Clerk



I hereby certify that the Lots hereon shown as in lots to the Village of Killbuck Ohio have been numbered consecutively and assessed and entered on the Duplicate according to Law this 12th day of February A.D. 1918.

J.J. Hershberger,
Auditor of Holmes County, O.

Received & filed for record 1^o P.M. Feby. 12th 1918
Recorded Feby 13th 1918.

Homert A. Bell, Recorder.