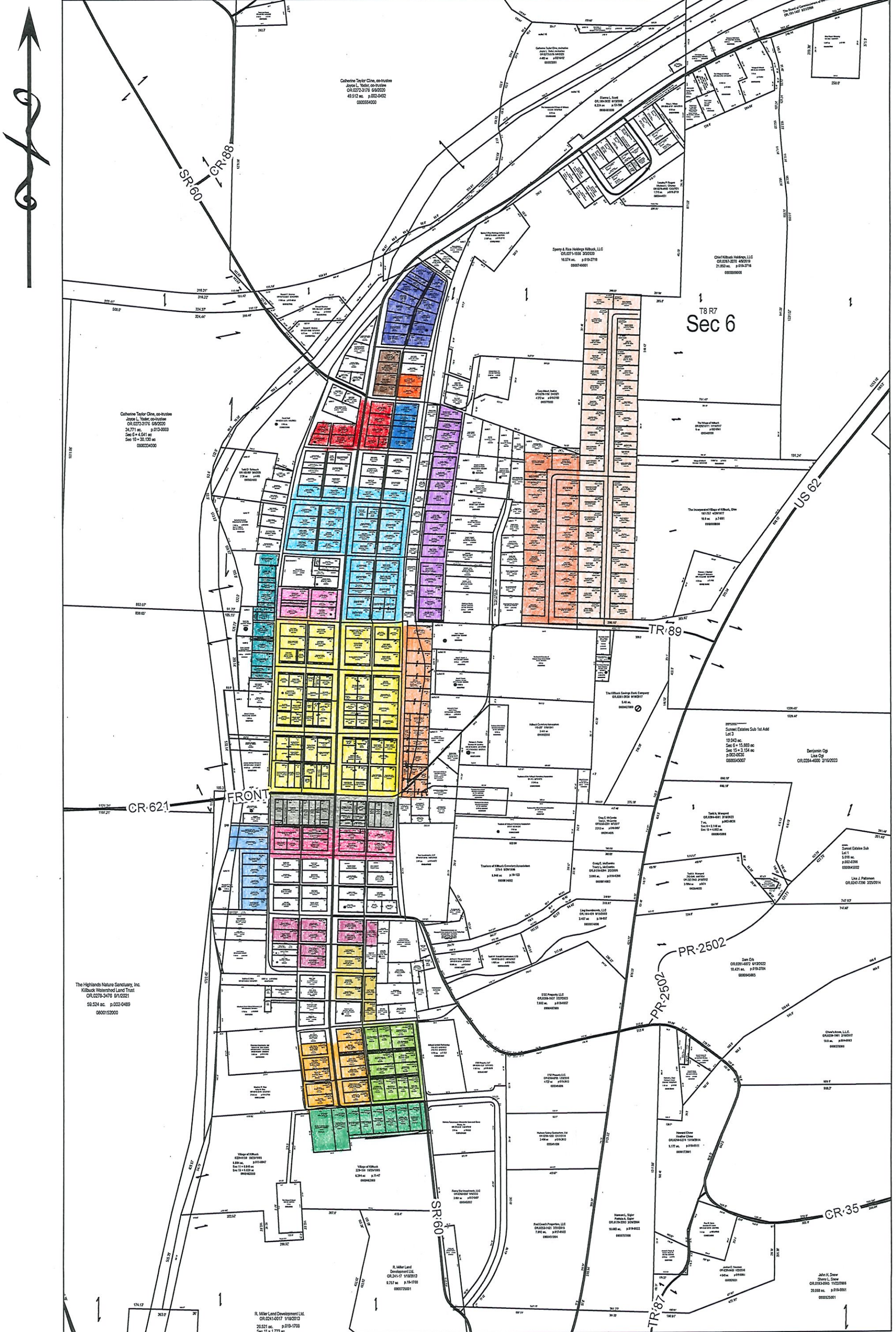







1 inch = 467 feet



Disclaimer: Map and parcel data are believed to be accurate, but accuracy is not guaranteed.
 This is not a legal document and should not be substituted for a title search, appraisal, survey, or zoning verification.

VILLAGE	ANNEXATION/ADDITION	PLAT REF	DATE	DOCUMENT	RESOLUTION
Killbuck Village (incorporated)	Oxford	DV 002-0604	5/1/1834		
	Duncan's Addition of Outlots	p001-0125	11/10/1870		
	Waltman's Addition	p001-0127	5/31/1871		
	Carpenter Addition	p001-0254	1/1/1874		
	Duncan's 2nd Addition	p001-0139	1/29/1874		
	E&J Carpenter's 2nd Addition	p001-0263	11/21/1887		
	John C. Duncan's Addition of In Lots	p001-0277	9/5/1890		
	James E. Duncan's Addition	p001-0282	9/5/1890		
	J.C. & Wm. Duncan Lots	SR 04-203	4/23/1902		
	J.C. & W. Duncan Inlots	SR 04-240	3/12/1903		
	J.C. & W. Duncan lots	SR 04-252	7/7/1903		
	Joseph & Manelva Carpenter's Addition	SR 04-304	11/26/1906		
	J.C. & W. Duncan Subdivision	SR 04-377	3/9/1911		
	I.N Miller's Addition	p001-0351	3/31/1911		
	Henry Kasner's Subdivision	p001-0376	2/6/1913		
	Henry Kasner's Subdivision No.2	p001-0378	1/22/1914		

 Duncan's Addition of In Lots	p001-0397	5/5/1917
 Nelva Carpenter's Addition	p001-0398	2/13/1918
 James E. Carpenter Subdivision	p001-0417	4/12/1947
 Killbuck Heights Allotment	p003-088B	4/2/1963
 Killbuck Heights Incorporated II	p002-0143	7/23/1973