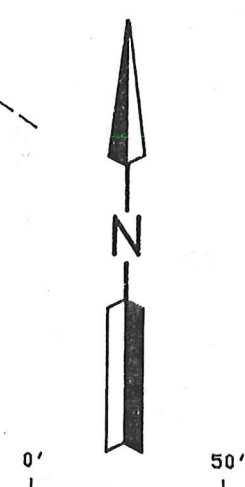
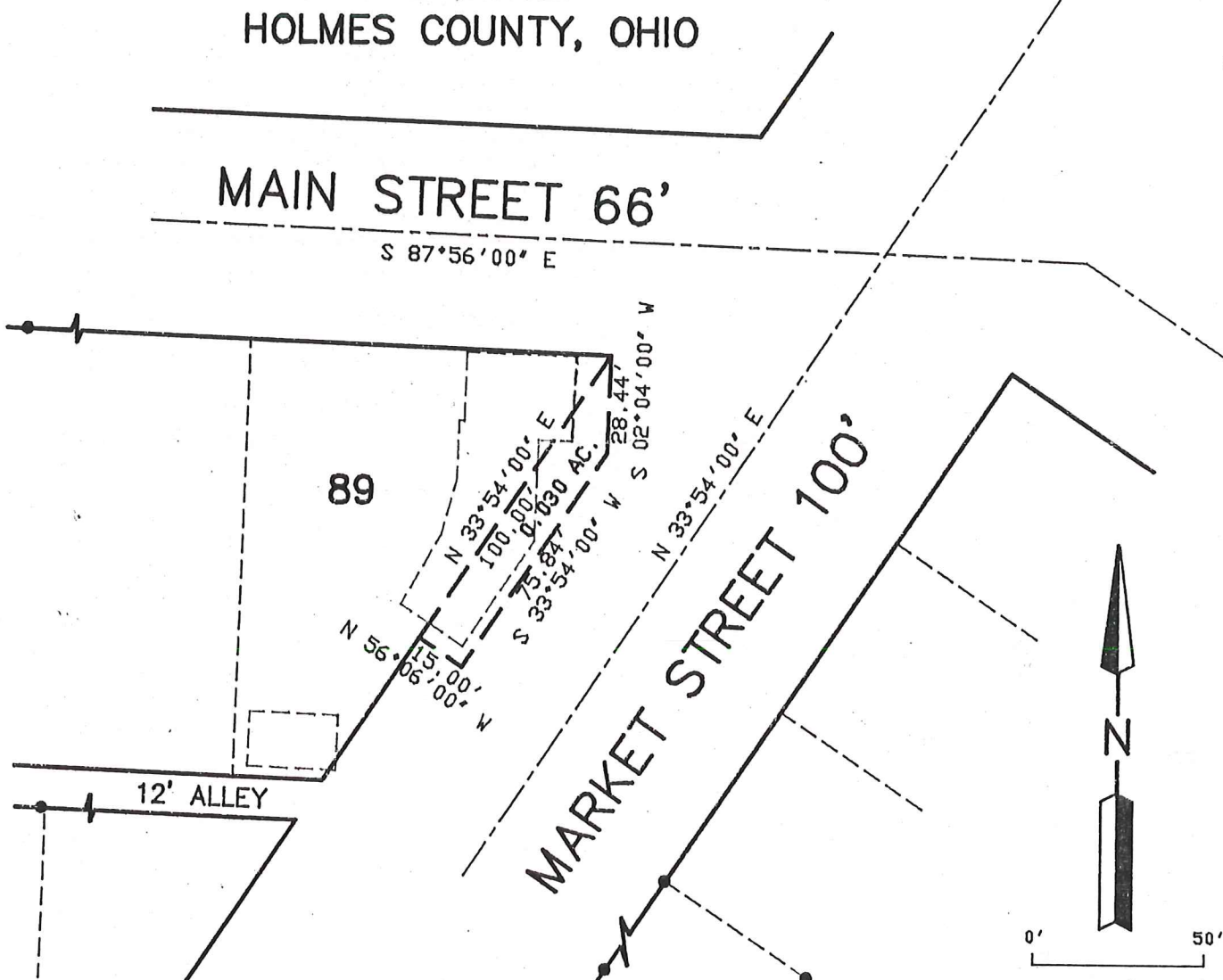


VILLAGE OF HOLMESVILLE
 SOUTHEAST QUARTER OF SECTION 3
 T-13N ; R-13W
 HOLMES COUNTY, OHIO



SCALE: 1" = 50'
 LS-4065
 LEGEND
 ● I.P. FOUND



SHAFFER, JOHNSTON, LICHTENWALTER
 & ASSOCIATES, INC.

CONSULTING ENGINEERS - SURVEYORS
 MANSFIELD OHIO WOOSTER

Distances shown hereon are expressed in feet and decimal parts thereof, bearings are to an assumed meridian and are used to express angles only, iron pins or monuments were found or set as indicated hereon and are correct to the best of my knowledge, information and belief this;



29TH day of MAY 19 92

Virgil D. Landis

Virgil D. Landis, P.S. #6551