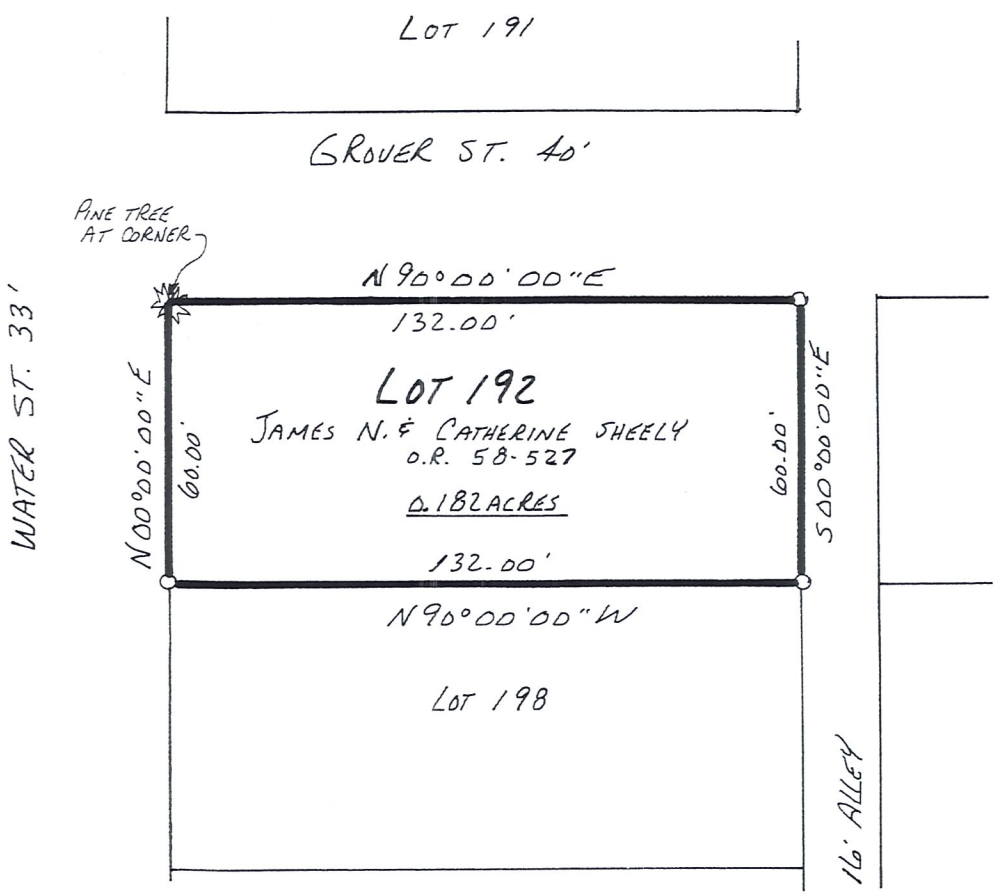
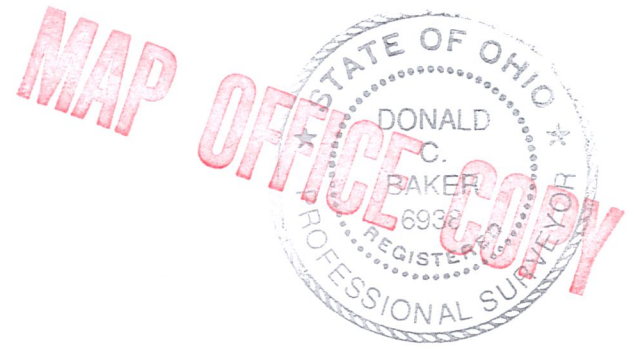


VILLAGE OF KILLBUCK
 LOT 192
 HOLMES COUNTY, OHIO
 (SURVEYED FOR JAMES SHEELY)
 (RESURVEY OF LOT 192)

RECEIVED
 AUG 07 2001
 Hol. Co. Tax Map Office



SCALE: 1" = 40'
 ○ 5/8" REBAR WITH I.D. CAP SET
 I.D. CAP MARKED "BAKER 6938"



I CERTIFY THIS SURVEY TO BE CORRECT
 TO THE BEST OF MY KNOWLEDGE.
 Donald C. Baker
 DONALD C. BAKER P.S. 6938
 DONALD C. BAKER SURVEYING
 138 N. CLAY ST.
 MILLERSBURG, OHIO 44654
 PH. 330-674-4788
 JULY 30, 2001

#53101 M.L. DAVIS
 F.C.C. F.D. BAKER