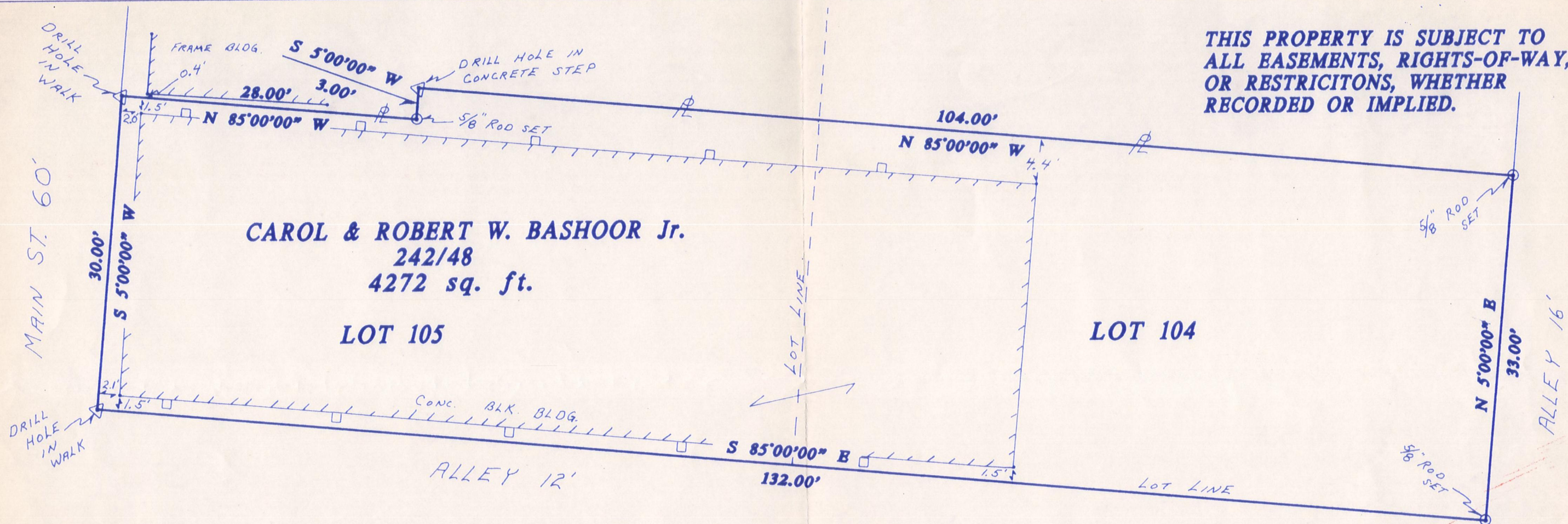
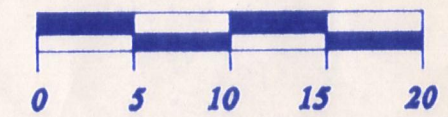


THIS PROPERTY IS SUBJECT TO ALL EASEMENTS, RIGHTS-OF-WAY, OR RESTRICTIONS, WHETHER RECORDED OR IMPLIED.



Pertinent documents:
 Deeds: 242/48, 280/971, 210/401,
 241/866, Plats: 1/254, 2/65,
 tax map, surveys by:
 Donald C. Baker,
 William H. Long.

Bearings are based on
 a survey by Donald C. Baker,
 dated: June 7, 1988.
 All 5/8" rods set are 30" long.
 All distances are of record.



SCALE: 1"=10'

MAP OFFICE COPY



Earl R. Donaker
 I, Earl R. Donaker, P.S., 7142, hereby
 certify this plat to have been prepared
 from a survey and to be correct to the
 best of my knowledge and belief.

**EARL R. DONAKER
 PROFESSIONAL SURVEYOR**

727 Cambridge Road
 Coshocton, Ohio 43812
 tel: (614) 623-0993
 1-800-842-3264

*"Remove not the old landmark"
 Proverbs 23:10*

Being a part of In-lots 105 & 104
 (old lots 5&6, plat vol. 1, pg.254
 Joseph Carpenter), in the N.W.1/4
 sec. 15, T.8N., R.7W., U.S.M.L.
 in the Village of Killbuck,
 in the county of Holmes,
 in the State of Ohio.
 Scale: 1"=10' Date: July, 1989