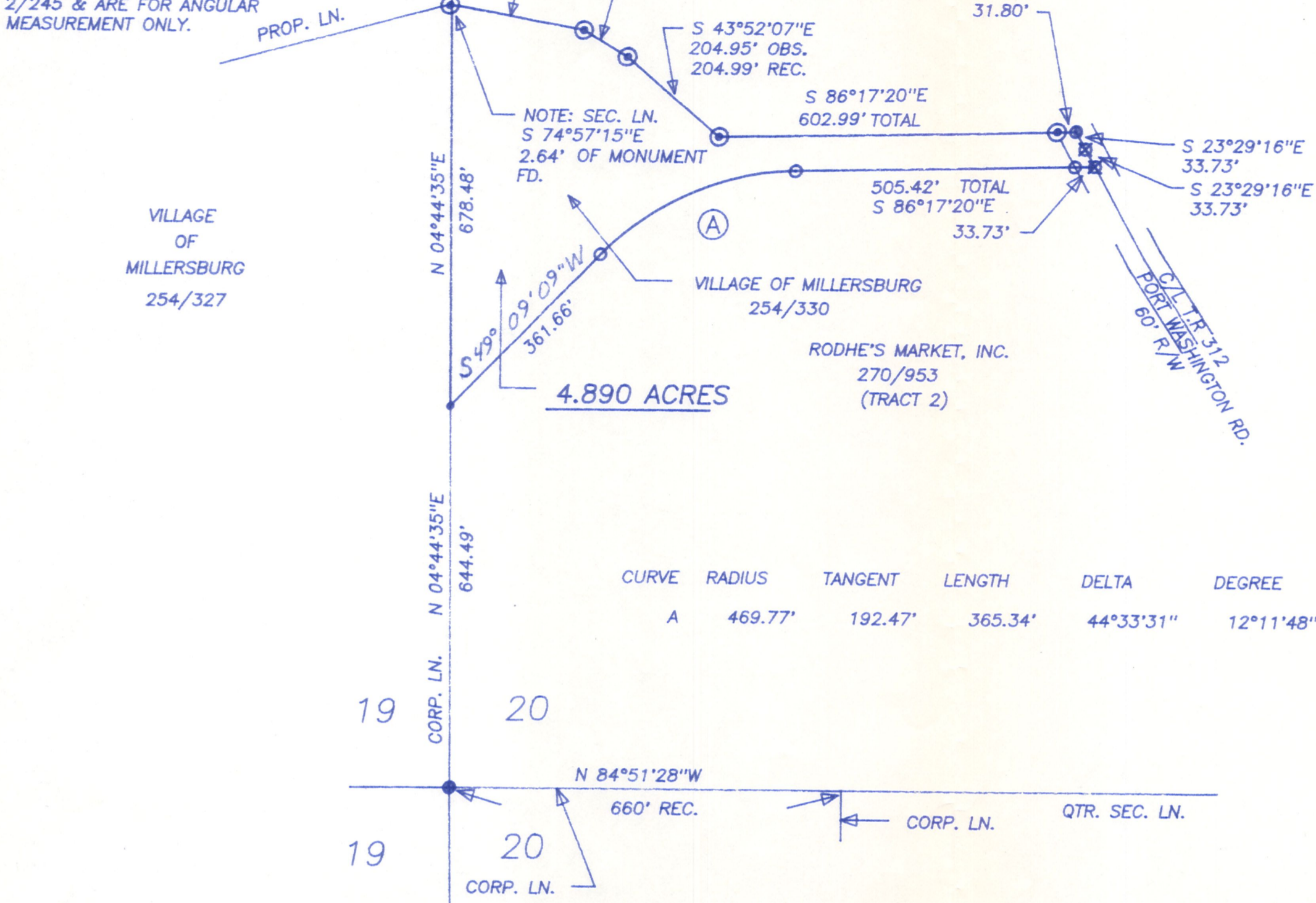
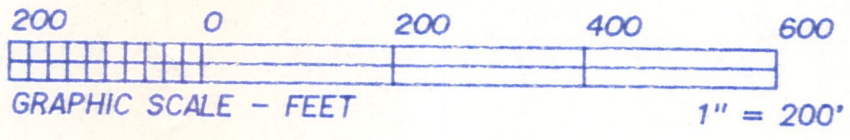




BEARINGS EST. FROM SUR. PLAT 2/245 & ARE FOR ANGULAR MEASUREMENT ONLY.



- LEGEND:
- = STONE FD.
  - = 5/8" RE-BAR FD. UNLESS NOTED
  - = POINT-OF-DEPARTURE
  - = 5/8" X 30" RE-BAR W/PLASTIC I.D. CAP SET
  - ⊗ = R/R SPIKE SET
  - △ = R/R SPIKE FD.
  - ⊙ = CONC. MONUMENT W/ I.P. FD.

CURVE	RADIUS	TANGENT	LENGTH	DELTA	DEGREE	CHORD	CH.BEARING
A	469.77'	192.47'	365.34'	44°33'31"	12°11'48"	356.20'	S 71°25'55"W

REFERENCE DOCUMENTS:  
 TAX MAPS  
 DEEDS AS SHOWN  
 SURVEY PLATS: 2/227 & 2/245

**PROPOSED ANNEXATION  
 TO THE  
 VILLAGE OF MILLERSBURG**  
 HOLMES COUNTY, STATE OF OHIO

APPROVED BY HOLMES COUNTY COMMISSIONERS

I HEREBY CERTIFY THAT THE HOLMES COUNTY COMMISSIONERS HAVE APPROVED THE DETACHMENT OF THIS TRACT OF LAND AS SHOWN HEREON FROM HOLMES COUNTY.

DATE \_\_\_\_\_, 1998  
 \_\_\_\_\_  
 CHAIRMAN, COUNTY COMMISSIONERS

RESOLUTION: \_\_\_\_\_

APPROVED BY MILLERSBURG PLANNING COMMISSION

I HEREBY CERTIFY THAT THIS PLAT FOR ANNEXATION WAS APPROVED BY THE MILLERSBURG PLANNING COMMISSION AT A MEETING HELD ON \_\_\_\_\_, 1998.

BY \_\_\_\_\_  
 PRESIDENT, MILLERSBURG PLANNING COMMISSION

APPROVED BY MILLERSBURG VILLAGE COUNCIL

I HEREBY CERTIFY THAT THIS PLAT FOR ANNEXATION WAS APPROVED BY THE VILLAGE COUNCIL OF MILLERSBURG, OHIO AT A MEETING HELD ON \_\_\_\_\_, 1998.

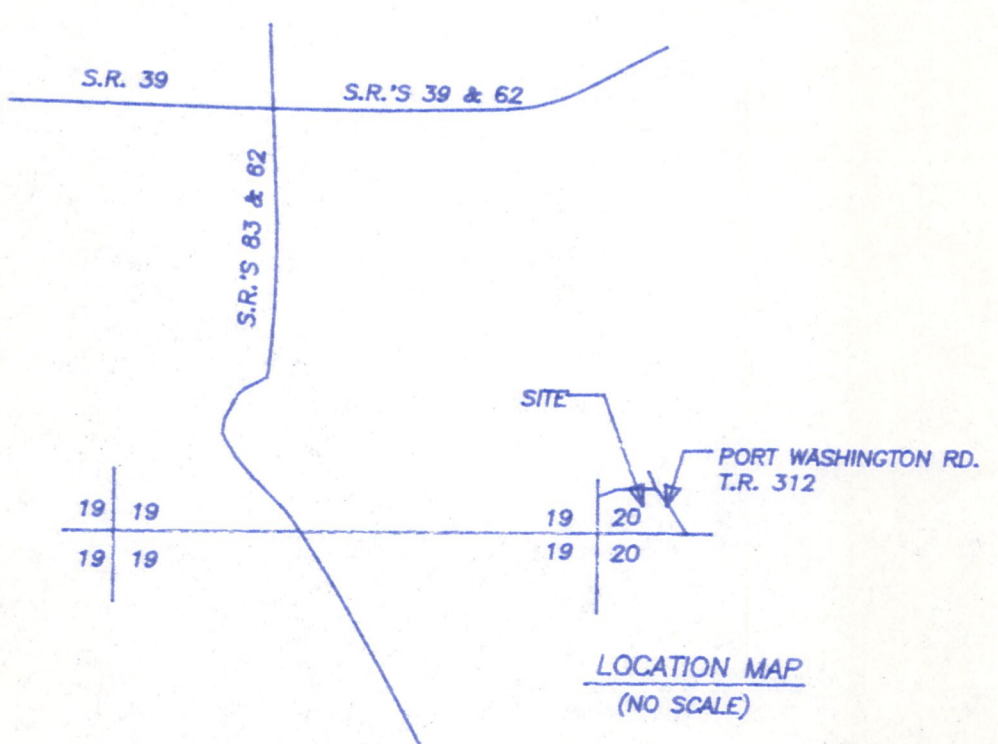
BY \_\_\_\_\_  
 VILLAGE CLERK

ORDINANCE: \_\_\_\_\_

I CERTIFY THIS PLAT & SURVEY TO BE CORRECT TO THE BEST OF MY KNOWLEDGE:

\_\_\_\_\_  
 JIM SHAMP, REG. SUR. NO. S-6088

OCTOBER 16, 1995:  
 DATE



<b>HEARTLAND Surveying, Inc.</b>			
Jim Shamp			
5210 T.R. 257		MILLERSBURG, OH 44654	
PH: 330-674-4698			
SURVEY ANNEXATION TO THE VILLAGE OF MILLERSBURG		STATE OHIO	
COUNTY HOLMES	TWP. HARDY	RNG. 7 WEST	TWP. 9 NORTH
N.W. QTR. OF SEC. 20		940802.CRD 980226.PL	