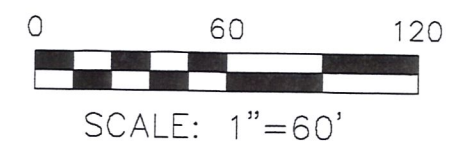
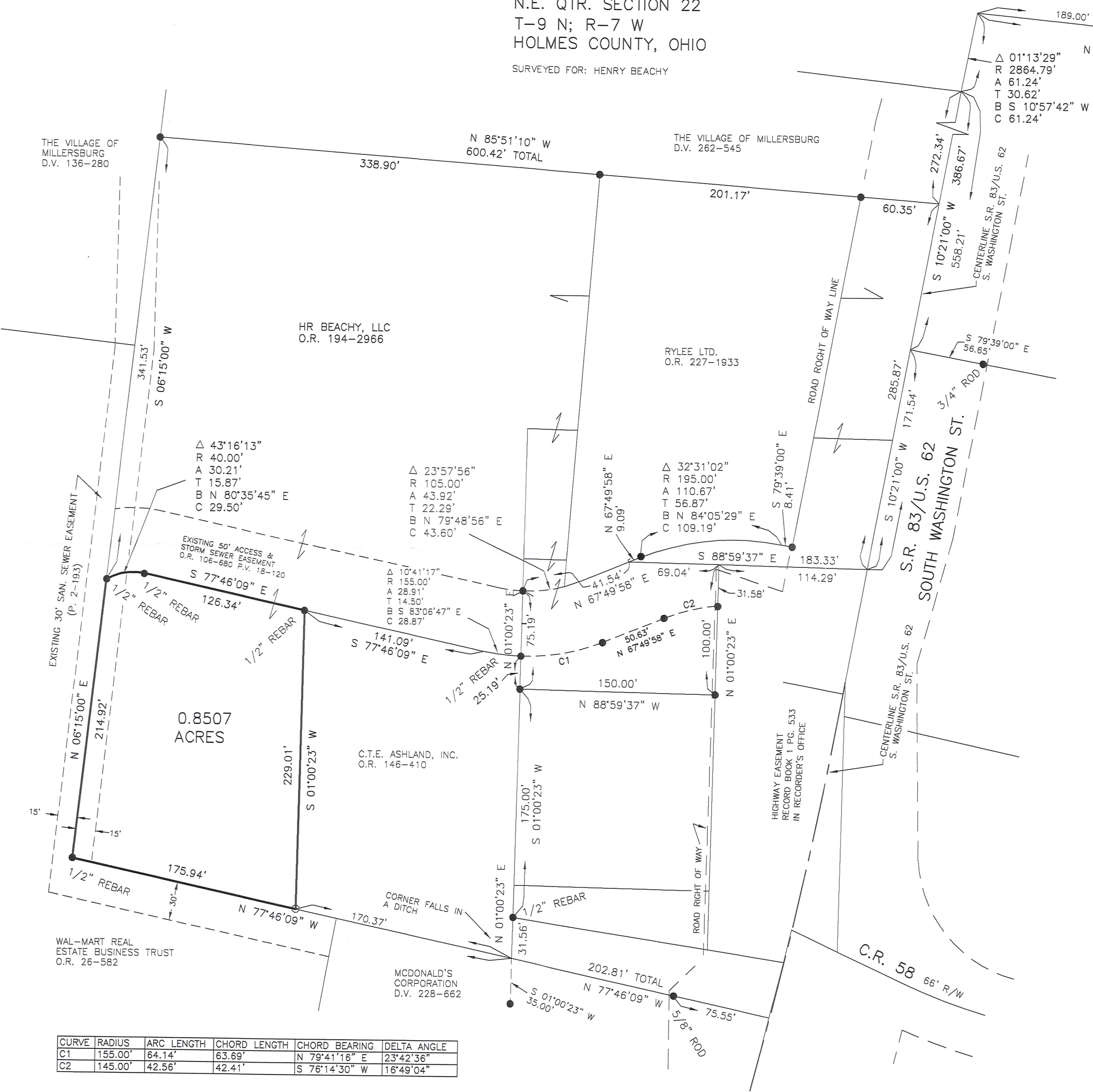


VILLAGE OF MILLERSBURG

HARDY TOWNSHIP  
N.E. QTR. SECTION 22  
T-9 N; R-7 W  
HOLMES COUNTY, OHIO

SURVEYED FOR: HENRY BEACHY



- 5/8" REBAR FOUND UNLESS OTHERWISE NOTED
- MAG NAIL FOUND
- 5/8" REBAR SET WITH I.D. CAP I.D. CAP MARKED "BAKER 6938"

REFERENCES

- DEED VOL. 136 PAGE 280
- DEED VOL. 262 PAGE 545
- DEED VOL. 228 PAGE 662
- O.R. VOL. 146 PAGE 410
- O.R. VOL. 194 PAGE 2966
- O.R. VOL. 26 PAGE 582
- PLAT VOL. 2 PAGE 193
- PLAT VOL. 2 PAGE 353
- PLAT VOL. 11 PAGE 41
- PLAT VOL. 13 PAGE 127
- PLAT VOL. 16 PAGE 921
- PLAT VOL. 18 PAGE 120
- PLAT VOL. 18 PAGE 298
- PLAT VOL. 19 PAGE 2291
- BEARINGS FROM PLAT VOL. 19 PAGE 2291



PRELIMINARY FOR REVIEW ONLY

CERTIFY THIS SURVEY TO BE CORRECT TO THE BEST OF MY KNOWLEDGE.

AARON L. GERBER P.S. 8379  
DATE: SEPTEMBER 5, 2017  
ALG  
FILE NAME: WORKS\5-423-17\DB-AG

CURVE	RADIUS	ARC LENGTH	CHORD LENGTH	CHORD BEARING	DELTA ANGLE
C1	155.00'	64.14'	63.69'	N 79°41'16" E	23°42'36"
C2	145.00'	42.56'	42.41'	S 76°14'30" W	16°49'04"

BAKER SURVEYING, LLC  
138 N. CLAY STREET  
MILLERSBURG, OHIO 44654  
PH. 330-674-4788  
FAX 330-674-6027  
EMAIL: bakersurveying@gmail.com