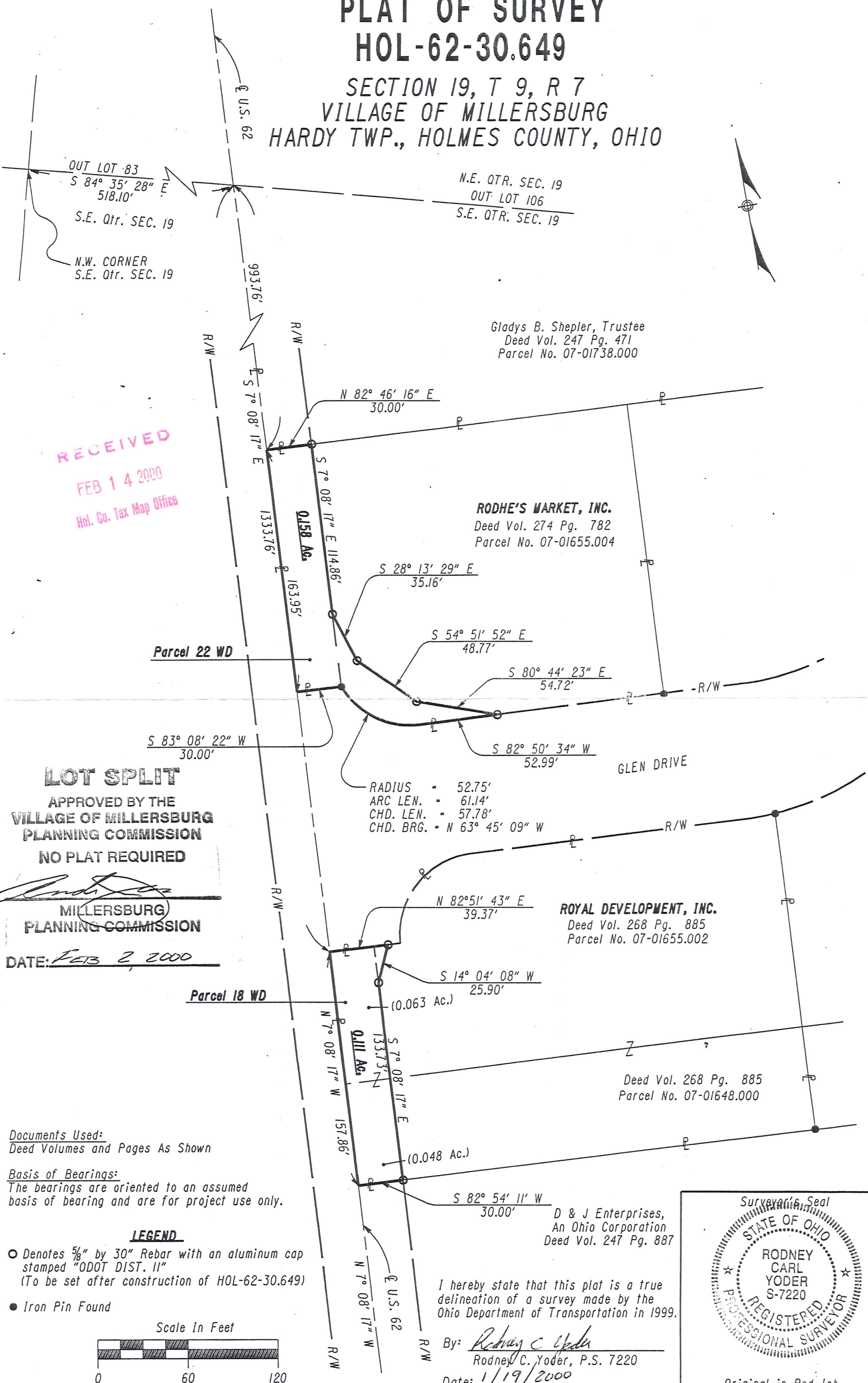


PLAT OF SURVEY HOL-62-30.649

SECTION 19, T 9, R 7
VILLAGE OF MILLERSBURG
HARDY TWP., HOLMES COUNTY, OHIO



RECEIVED
FEB 14 2000
Hol. Co. Tax Map Office

Gladys B. Shepler, Trustee
Deed Vol. 247 Pg. 471
Parcel No. 07-01738.000

RODHE'S MARKET, INC.
Deed Vol. 274 Pg. 782
Parcel No. 07-01655.004

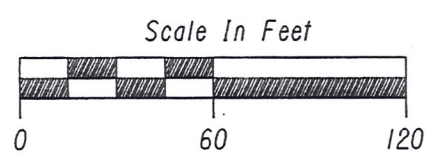
ROYAL DEVELOPMENT, INC.
Deed Vol. 268 Pg. 885
Parcel No. 07-01655.002

D & J Enterprises,
An Ohio Corporation
Deed Vol. 247 Pg. 887

LOT SPLIT
APPROVED BY THE
VILLAGE OF MILLERSBURG
PLANNING COMMISSION
NO PLAT REQUIRED
[Signature]
MILLERSBURG
PLANNING COMMISSION
DATE: FEB 2, 2000

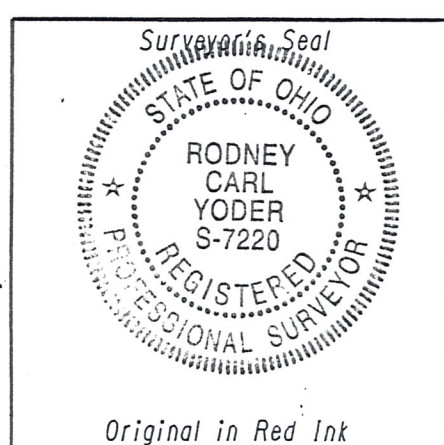
Documents Used:
Deed Volumes and Pages As Shown
Basis of Bearings:
The bearings are oriented to an assumed
basis of bearing and are for project use only.

LEGEND
○ Denotes 5/8" by 30" Rebar with an aluminum cap
stamped "ODOT DIST. 11"
(To be set after construction of HOL-62-30.649)
● Iron Pin Found



I hereby state that this plat is a true
delineation of a survey made by the
Ohio Department of Transportation in 1999.

By: *[Signature]*
Rodney C. Yoder, P.S. 7220
Date: 1/19/2000



Original in Red Ink