

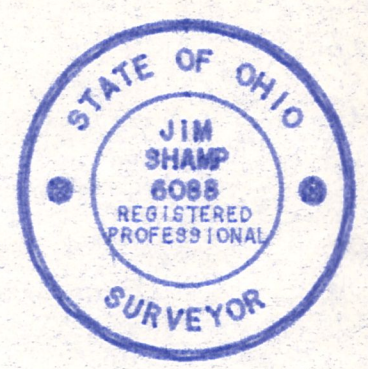
BEARINGS EST. FROM SUR. PLAT 14/813 AND ARE TO DENOTE ANGULAR MEAS. ONLY.

CURVE	RADIUS	TANGENT	LENGTH	DELTA	DEGREE	CHORD	CH. BEARING
A	181.77'	64.75'	124.41'	39°12'52"	31°31'18"	121.99'	N 57°20'48"E
B	184.77'	69.13'	130.90'	45°31'13"	34°46'28"	127.49'	N 80°29'58"E
C	398.40'	148.05'	279.87'	40°27'10"	14°27'15"	274.09'	N 83°01'58"E
D	618.17'	95.38'	189.27'	17°30'52"	9°15'13"	188.53'	N 51°33'49"E
E	224.21'	26.23'	52.21'	13°20'36"	25°33'18"	52.10'	N 53°39'12"E
F	31.00'	24.29'	41.21'	76°10'17"	184°49'31"	38.24'	N 85°03'48"E
G	498.84'	106.43'	209.69'	24°11'27"	11°32'12"	208.13'	S 88°56'47"E
H	256.79'	89.54'	172.31'	38°26'44"	22°18'43"	169.09'	S 81°49'08"E
I	329.71'	88.01'	130.29'	22°38'27"	17°22'39"	129.44'	S 53°55'00"E
J	105.11'	77.80'	133.94'	73°00'46"	54°30'36"	125.06'	S 28°43'51"E
K	285.01'	90.48'	175.22'	35°13'27"	20°06'11"	172.47'	S 25°23'18"W
L	233.66'	81.48'	158.80'	38°26'43"	24°31'07"	153.87'	S 23°46'38"W
M	173.69'	23.62'	46.95'	15°29'14"	32°59'15"	48.81'	S 35°15'58"W
N	345.01'	109.52'	212.10'	35°13'27"	18°36'25"	208.78'	S 25°23'18"W
O	345.01'	2.41'	4.83'	0°48'07"	18°36'25"	4.83'	N 08°10'16"E
P	165.11'	122.20'	210.40'	73°00'46"	34°42'05"	196.45'	S 28°43'51"E
Q	269.71'	53.99'	106.58'	22°38'27"	21°14'35"	105.89'	S 53°55'00"E
R	316.79'	110.46'	212.57'	38°26'44"	18°05'10"	208.80'	S 81°49'08"E
S	438.64'	93.57'	184.35'	24°11'27"	13°07'19"	182.89'	S 88°56'47"E
T	31.00'	24.29'	41.21'	76°10'17"	184°49'30"	38.24'	S 18°45'55"E
U	224.21'	26.51'	52.78'	13°29'20"	25°33'18"	52.88'	S 12°34'18"W
V	224.21'	55.19'	108.23'	27°39'26"	25°33'18"	107.18'	N 33°08'58"E

- LEGEND:
- - STONE FOUND
 - - IRON PIN/PIPE FOUND
 - - POINT-OF-DEPARTURE
 - ⊙ - 5/8" X 30" RE-BAR W/1.D. CAP SET
 - ⊠ - RAILROAD SPIKE SET
 - ⊡ - R/R SPIKE FOUND
 - ⊙ - CONCRETE MONUMENT FOUND

REFERENCE DOCUMENTS:
TAX MAP
DEEDS AS SHOWN
SURVEY PLATS:
14/813

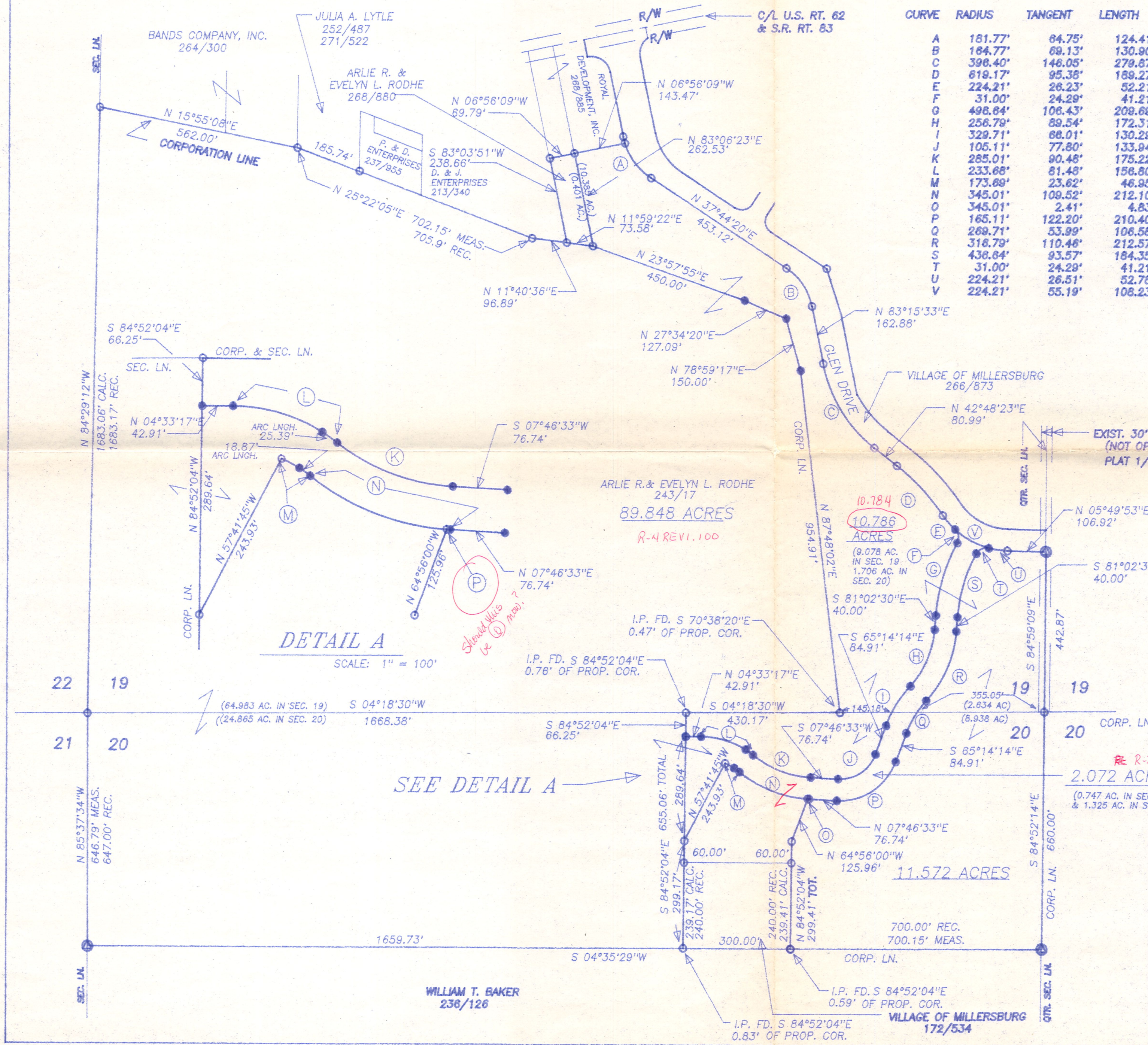
Village Signature Block



I CERTIFY THIS TO BE A TRUE PLAT OF A FIELD SURVEY COMPLETED ON FEBRUARY 27, 1996:

J. Shamp
JIM SHAMP, REG. SUR. NO. 9-6088

HEARTLAND Surveying			
Jim Shamp 5210 Twp. Rd. 257 Millersburg, OH 44854 Phone: 216-674-4698			
SURVEY		DATE	
ARLIE RODHE		FEBRUARY 28, 1996	
STATE	COUNTY	TOWNSHIP	RANGE
OHIO	HOLMES	HARDY	7 WEST
TOWNSHIP	SECTIONS 19 & 20		9308001.CRD 9/95
9 NORTH	VILLAGE OF MILLERSBURG		960220.PL 2/96



DETAIL A
SCALE: 1" = 100'

SEE DETAIL A