



NORTH BASED ON O.S.I.P.
ORTHO PHOTOS

RESEARCH DATA
DEEDS, SURVEYS AND PLATS OF RECORD

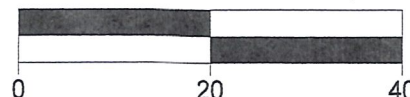
- RECOVERED 1/2" PIPE
- ⊕ RECOVERED 5/8" REBAR WITH PLASTIC CAP
- ⊖ RECOVERED WATER VALVE COVER
- ⊙ 1.25" PIPE OF RECORD

S.W. CORNER
N.E. QUARTER
SECTION 19

BOUNDARY PLAT IN

OUT LOT 106
VILLAGE OF MILLERSBURG
NORTHEAST QUARTER SECTION 19
RANGE 7W, TOWNSHIP 9N
HARDY TOWNSHIP
HOLMES COUNTY
U.S. MILITARY LANDS
OHIO

SCALE 1" = 20' AUGUST 5, 2014



PREPARED BY
AMERICAN PRECISION SURVEYING
35217 Twp. Rd. 41A
WARSAW, OHIO 43844
740-622-2783

WASHINGTON ST. / S.R. 83 50'

MILITARY RUN LLC.
O.R. 246/2115

S. & K.L. EILER
D.R. 200/340
O.R. 247/1353

N 83°49'12" E
13.50'

N 83°49'12" E
123.17'

N 88°00'09" E
18.19'

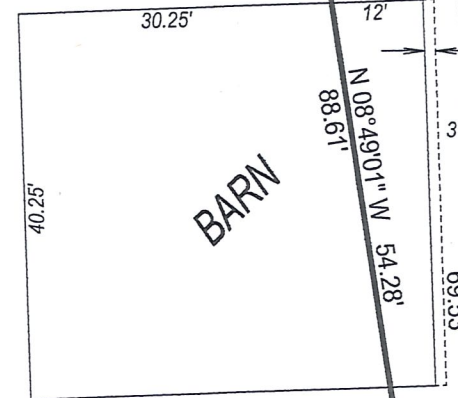
N 08°49'01" W 34.33'
S 08°49'01" E

S 01°56'09" E
34.11'

TRACT 4
0.013 acres

TRACT 1
DOWNTOWN ENTERPRISES, CO.
O.R. 97/597

0.244 acres



1.15' OVERHANG

WANDA S. MULLET
O.R. 225/3210

TRACT 2
0.016 acres

S 87°21'46" E
138.98'

0.048 acres

TRACT 3

JUDGEMENT ENTRY D.R. 266/421

S 87°21'46" E
544.47'

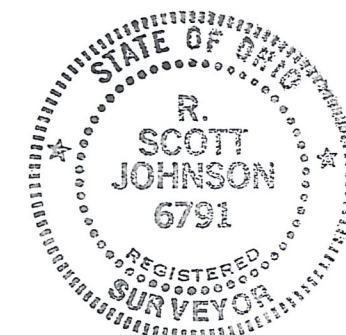
QUARTER SECTION LINE

N 87°21'46" W
138.91'

S 08°49'01" E
15.30'

N 87°21'46" W
5.76'

WANDA S. MULLET
O.R. 225/3210



R. Scott Johnson

R. SCOTT JOHNSON R.P.S. 6791