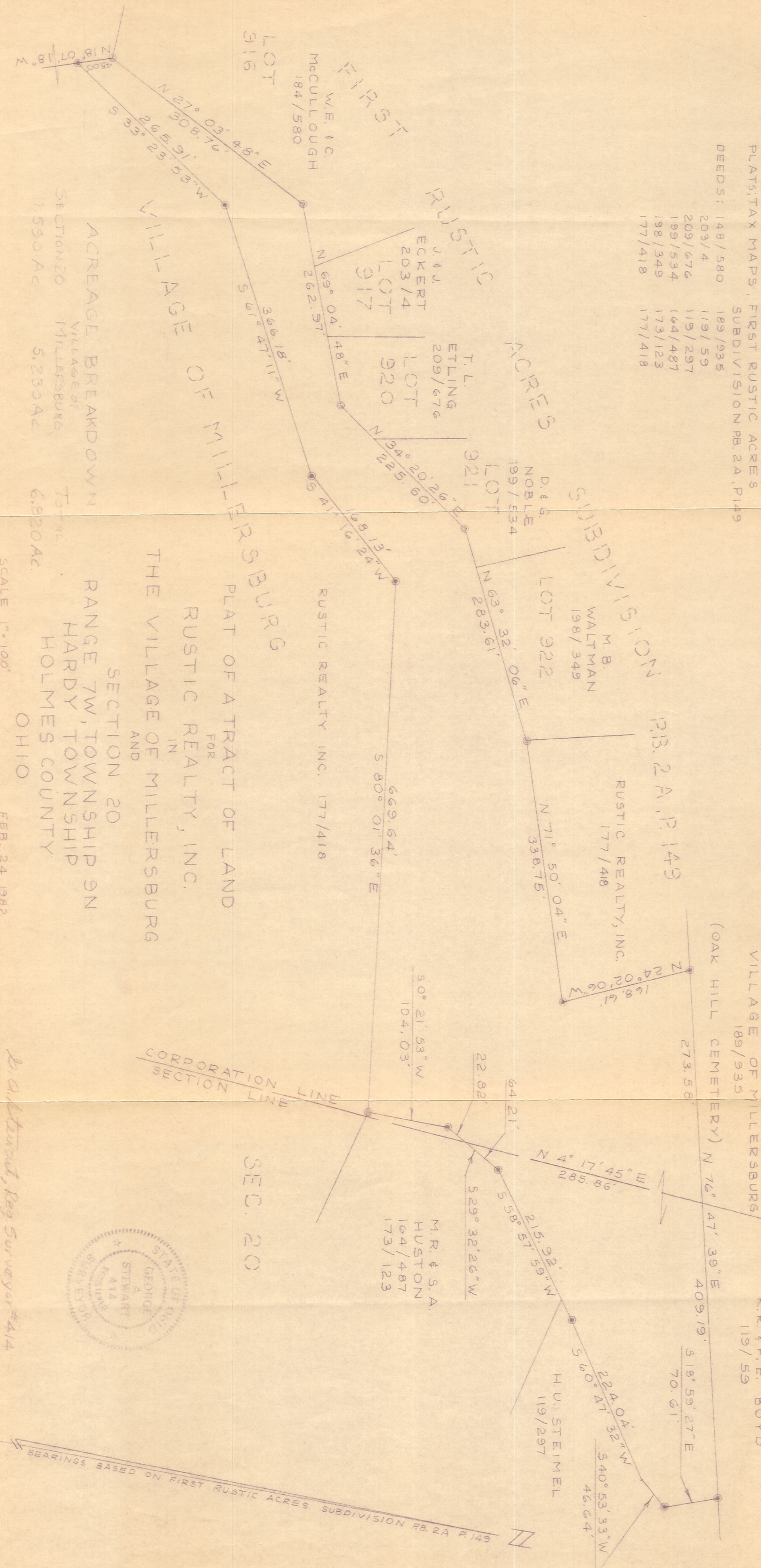


NOTE: THE FOLLOWING DOCUMENTS WERE USED AS SOURCES OF DATA FOR THIS SURVEY

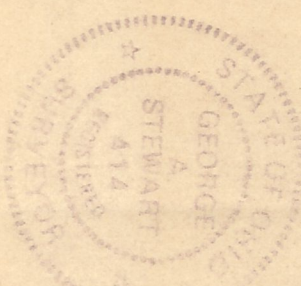
PLATS: TAX MAPS, FIRST RUSTIC ACRES SUBDIVISION PB. 2A, P. 149

DEEDS:	148/580	189/935
203/4	119/59	
209/676	119/297	
199/534	164/487	
198/349	173/123	
177/418	177/418	



ACREAGE BREAKDOWN
 SECTION 20 VILLAGE OF MILLERSBURG 1.590 AC
 SECTION 21 VILLAGE OF MILLERSBURG 5.230 AC
 SECTION 20 RANGE 7W, TOWNSHIP 9N HARDY TOWNSHIP HOLMES COUNTY OHIO 6.820 AC

PLAT OF A TRACT OF LAND FOR RUSTIC REALTY, INC. IN THE VILLAGE OF MILLERSBURG



B. A. Howard, Reg Surveyor #414

BEARINGS BASED ON FIRST RUSTIC ACRES SUBDIVISION PB. 2A P. 149