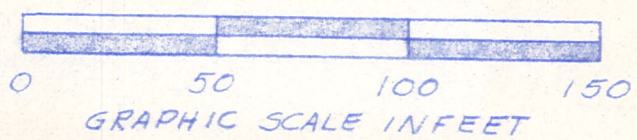
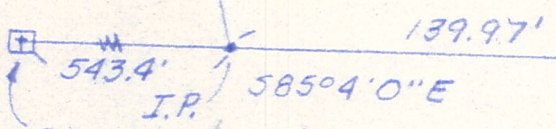
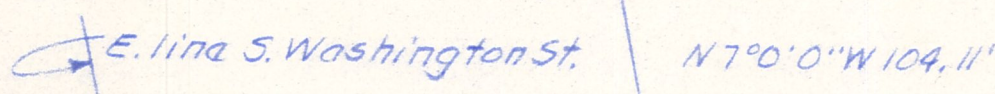
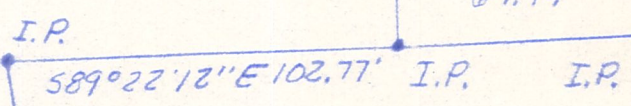
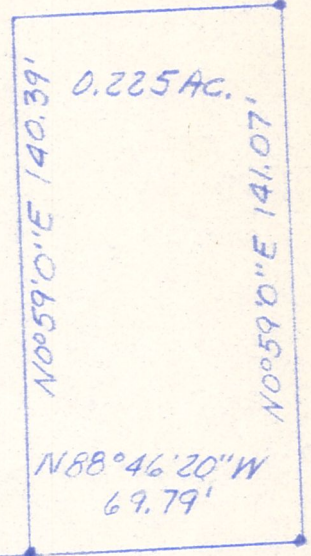


589°20'0"E 69.79'
S. Side Logsdon
Ave.

I.P.



Known as part of N.E. '14
S19, T9N, R7W of Hardy
Twp., Hol. Co., Ohio
Robert L. Kasnar, P.S. 5193
P.E. 28820
1123179



Stone at S.W. cor of N.E. '14 S19 T9N R7W Vol. 89 Pg 305

Known as part of N.E. '14 S19, T9N, R7W of Hardy Twp.,
Hol. Co., Ohio.

Beginning at a stone as per Vol. 89 Pg. 305 at S.W. cor of
N.E. '14 S19; thence with S. line N.E. '14 S19 585°4'0" E 683.37';
thence leaving the S. line N.E. '14 N7°0'0"W 104.11' to an iron
pin; thence 589°22'12"E 102.77' to an iron pin at the true
point of beginning of the herein described parcel;
thence N0°59'0"E 140.39' to a point on S. line of Logsdon
Ave.;
thence with Logsdon Ave. 589°20'0"E 69.79' to an iron pin;
thence leaving Logsdon Ave. S0°59'0"W 141.07' to an iron pin;
thence N88°46'20"W 69.79' to the point of beginning
and containing 0.225 acres.

MAP OFFICE COPY