

VILLAGE OF MILLERSBURG
LOT 200 ; PT. LOTS 198 & 199
HOLMES COUNTY, OHIO.

made for
CARL BRADFORD

M-9

I CERTIFY THIS SURVEY TO BE CORRECT
TO THE BEST OF MY KNOWLEDGE.

COMPLETED 11-30-64

For Correction
See Vol. 2 - 255

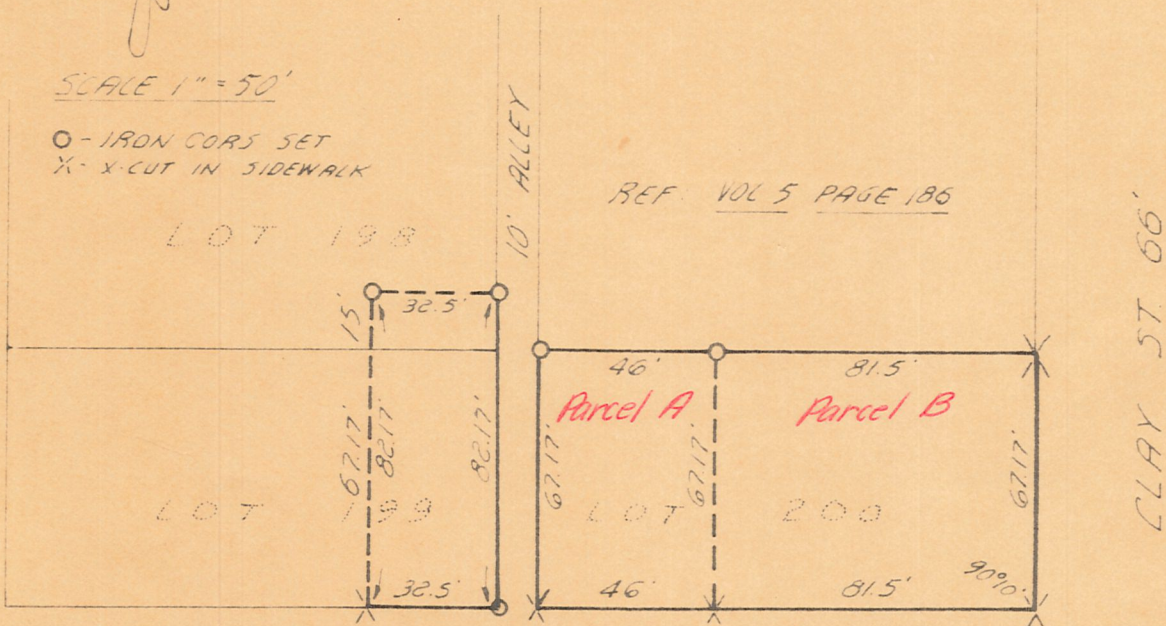
Ray W. Gasbarre
RAY W. GASBARRE 954153
MURPHY MIDDOD & GASBARRE
ENGINEERING ASSOC
P.O. BOX 157 WILLOUSTON, OHIO

WASHINGTON ST. 49.5'

SCALE 1" = 50'

O - IRON CORN SET
X - X-CUT IN SIDEWALK

REF. VOL 5 PAGE 186



PERKINS ST. 49.5'

STONE COR.
0.7' W of
COR.