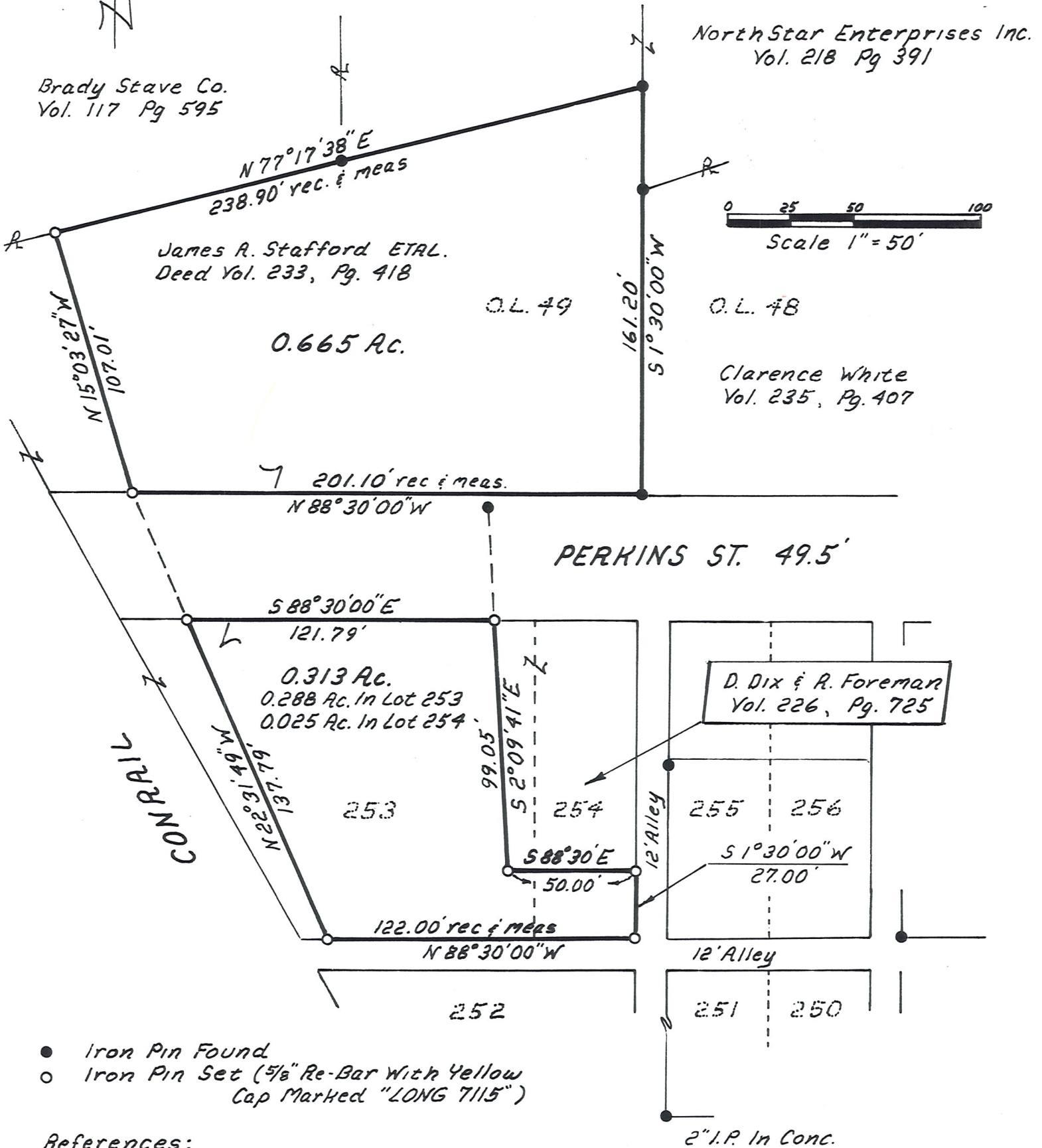


VILLAGE OF MILLERSBURG
 HOLMES COUNTY, OHIO
 HARDY TWP., S.W. QTR. SEC. 12, T-9N R-7W
 PART OF OUT LOT 49 & PARTS OF LOTS
 253 & 254 OF IRVIN & ENOS 2ND EDITION



- Iron Pin Found
- Iron Pin Set (5/8" Re-Bar With Yellow Cap Marked "LONG 7115")

References:
 Plat Vol. 9, Pg. 9
 Plat Vol. 10, Pg 750
 Deed Vol. 57, Pg. 215
 Railroad Plans
 Deed Vol. 233, Pg. 417

Bearings Based On Plat Vol. 9, Pg. 9.

I Certify This Survey To Be Correct
 To The Best Of My Knowledge.
Donald G. Long Sept. 21, 1987
 Donald G. Long P.S. 7115
 13301 T.R. 503
 Big Prairie Oh. 44611

