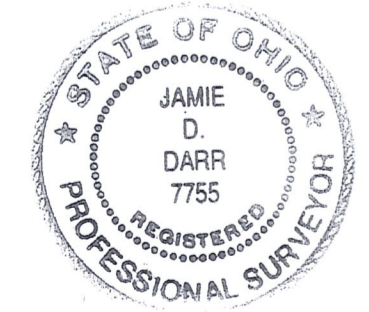
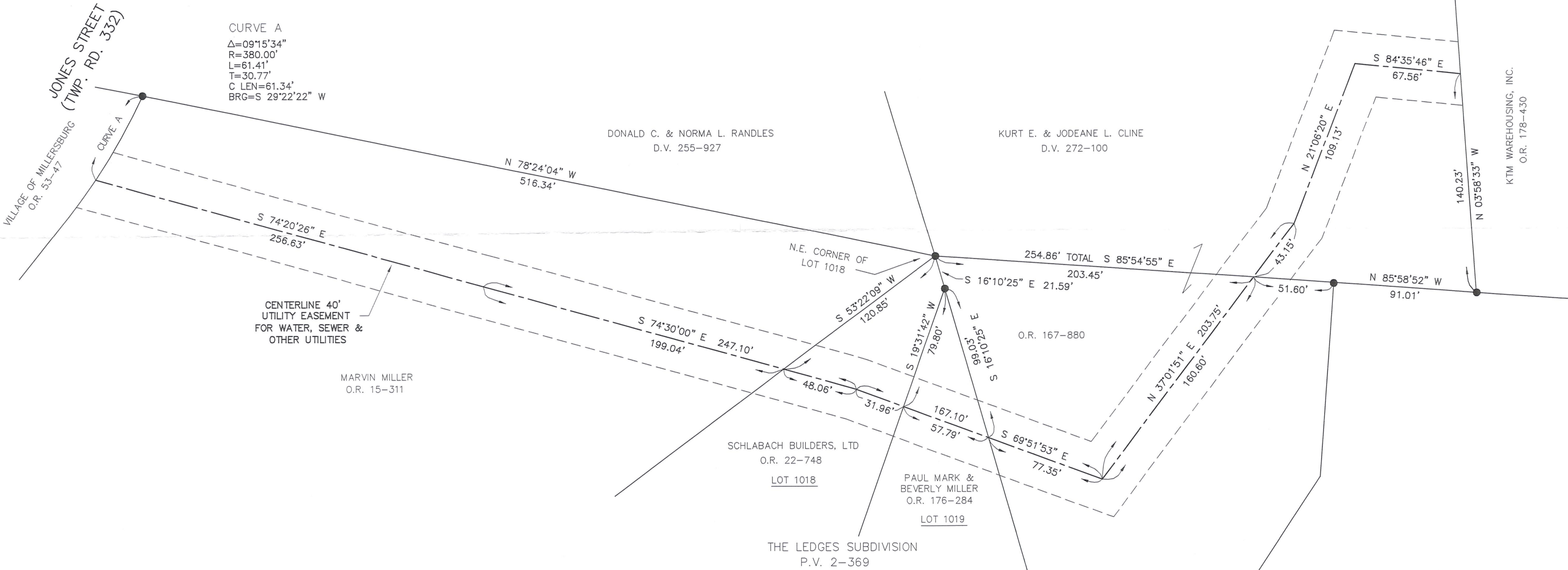


SURVEY OF A 40' UTILITY EASEMENT  
VILLAGE OF MILLERSBURG  
THE LEDGES SUBDIVISION  
LOTS 1018 & 1019  
HARDY TOWNSHIP  
1ST. QTR., LOT 41  
T-9 N; R-7 W  
HOLMES COUNTY, OHIO  
SURVEYED FOR: VILLAGE OF MILLERSBURG



REFERENCES:  
PLAT VOL. 2 PAGE 369  
PLAT VOL. 16 PAGES 26 & 834  
PLAT VOL. 17 PAGE 519  
BEARINGS FROM PLAT VOL. 16 PAGE 26



I CERTIFY THIS SURVEY TO BE CORRECT TO THE BEST OF MY KNOWLEDGE.  
JAMIE D. DARR PS 7755  
DATE: MAY 13, 2005  
JDD/ERZ  
File Name: C:\WORK\S-86-05\ERZ

DONALD C. BAKER SURVEYING  
138 N. CLAY ST.  
MILLERSBURG, OH 44654  
PH. 330-674-4788  
FAX: 330-674-6027