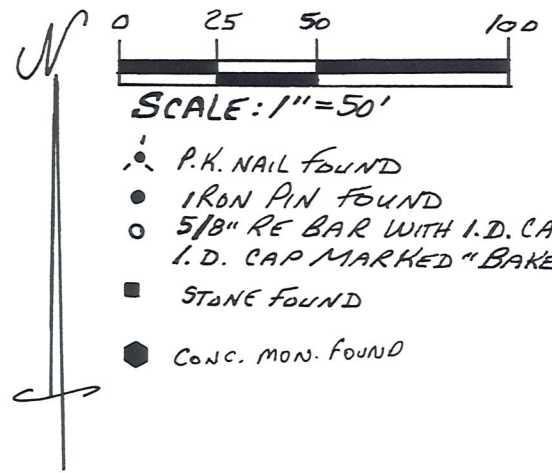


2nd

# VILLAGE OF MILLERSBURG PART OF OUT LOT 18 & OUT LOT 19

HARDY TOWNSHIP  
1ST. QTR. LOT 41  
T-9N; R-7W  
HOLMES COUNTY, OHIO

(SURVEYED FOR: THE VILLAGE OF MILLERSBURG)

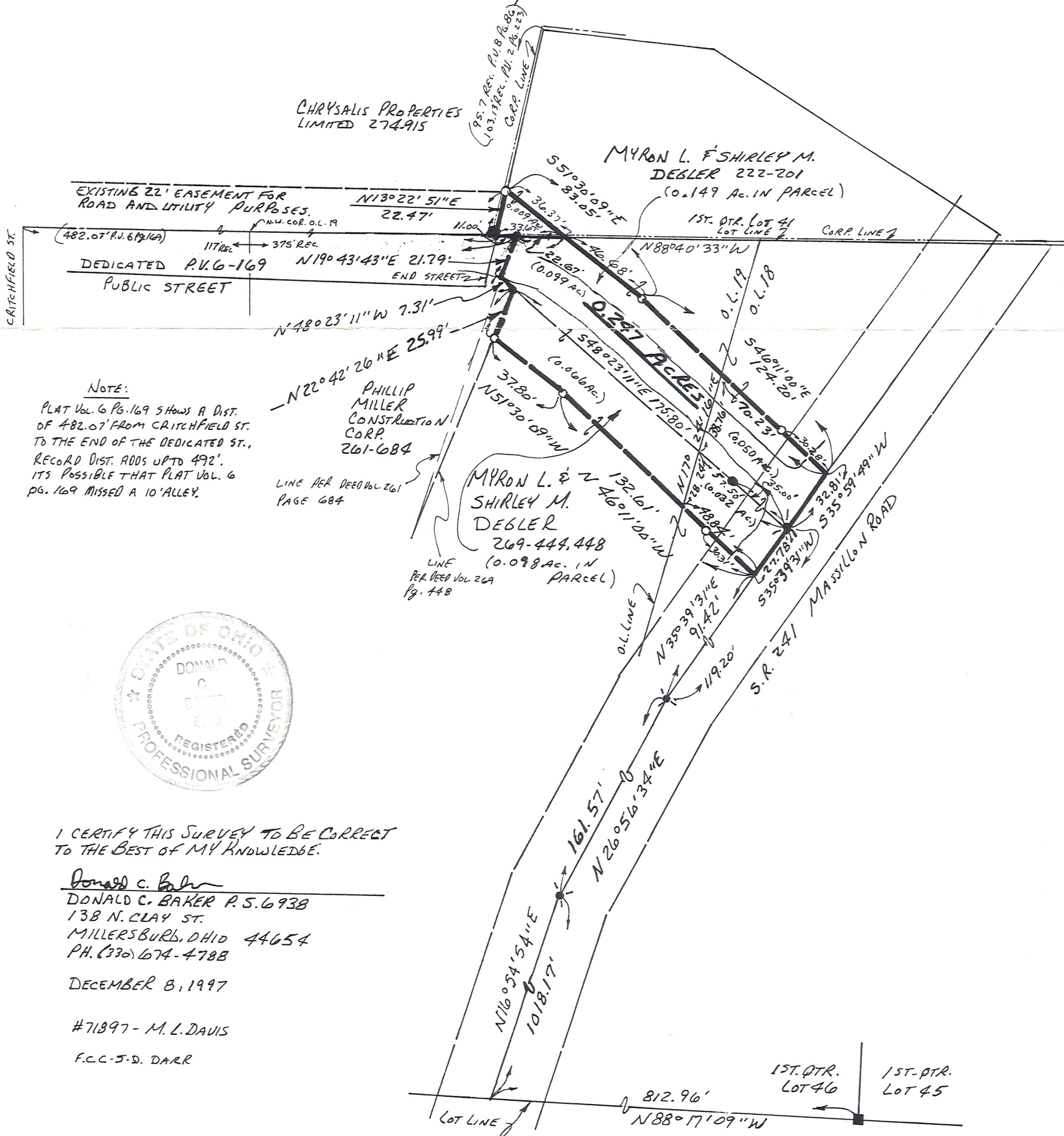


### REFERENCES:

- DEED Vol. 222 PAGE 201
- " " 269 " 444, 448
- " " 261 " 684
- " " 274 " 915

### NOTE:

I FOUND P.U. 2 PG. 223 TO HAVE THE CORRECT DISTANCE & P.U. 8 PG. 86 TO BE INCORRECT. ALSO P.U. 8 PG. 86 OVERLAPS DEED Vol. 261 PG. 684. I USED P.U. 2 PG. 223 & DEED Vol. 261 PG. 684 TO ESTABLISH PROPERTY LINES.



### NOTE:

PLAT Vol. 6 PG. 169 SHOWS A DIST. OF 482.07' FROM CRITCHFIELD ST. TO THE END OF THE DEDICATED ST. RECORD DIST. ADDS UP TO 492'. ITS POSSIBLE THAT PLAT Vol. 6 PG. 169 MISSED A 10' ALLEY.



I CERTIFY THIS SURVEY TO BE CORRECT TO THE BEST OF MY KNOWLEDGE.

Donald C. Baker  
DONALD C. BAKER P.S. 6938  
138 N. CLAY ST.  
MILLERSBURG, OHIO 44654  
PH. (330) 674-4788

DECEMBER 8, 1997

#71897 - M. L. DAVIS

F.C.C.-J.D. DARR