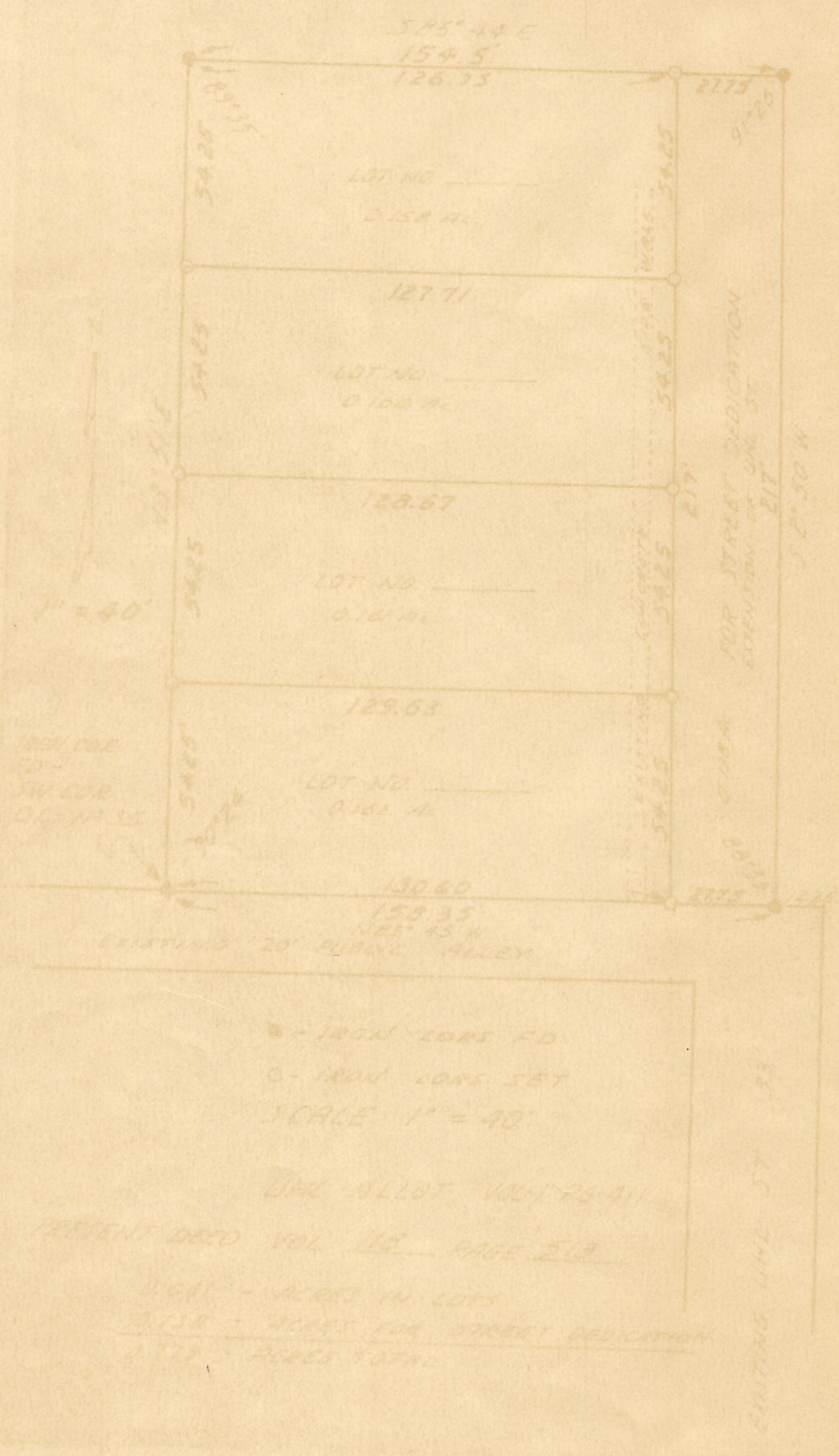


VILLAGE OF MILLERSBURG  
HOLMES COUNTY, OHIO

This survey made for The Holmes County Commissioners  
for the purpose of allotting part of Outlet No 35  
as shown on this plat.



REPLATTING AND RE-NUMBERING OF THE SOUTHWEST PART OF OUTLOT NO 35  
AND THE DEDICATION OF A PART FOR PUBLIC USE.

Being in the Village of Millersburg, Holmes County, Ohio.

KNOW all men by these present that we Arthur M. Uhl

John Ciaugue Carl A. Kick

The Holmes County Commissioners, owners of the described land on this  
plat do hereby acknowledge the laying out of this plat to be our own  
free act and deed, and do hereby also dedicate certain portions of said  
land indicated as street or public ways to public use forever.

WITNESS OUR HANDS THIS 12 DAY OF December 1960.

OWNERS Arthur M. Uhl John Ciaugue Carl A. Kick  
WITNESSES John Ciaugue Carl A. Kick

STATE OF OHIO  
COUNTY OF HOLMES ss

BEFORE ME Vera S. Weil a Notary Public in and for  
said County of Holmes personally appeared the above named persons and  
acknowledge that this plat is their own free act and deed.

IN TESTIMONY WHEREOF I hereby set my hand and seal this 12 day of  
December 1960.

Vera S. Weil  
Notary Public VERA S. WEIL, Notary Public  
My Commission Expires My Commission Expires Feb. 20, 1933

This plat was duly accepted by The Council of The Village of Millersburg  
Holmes County, Ohio on this      day of      1960.

Ordinance No      Signed by       
Clerk of The Village Council

Received for transfer this      day of      1960.  
Holmes County Taxmap Office

Received for transfer this      day of      1960.  
Holmes County Auditor

Received for recording this      day of      1960.  
Recorded in Plat Book      Page     

Time       
Holmes County Recorder

Survey recorded in Survey Values      Page     

I certify this survey to be correct to the best of my knowledge.  
Completed May 6th, 1960.

Ray W. Gasbarre  
Ray W. Gasbarre Reg Sur #4153  
ENGINEERING ASSOCIATES  
PO BOX 157  
WOOSTER, OHIO