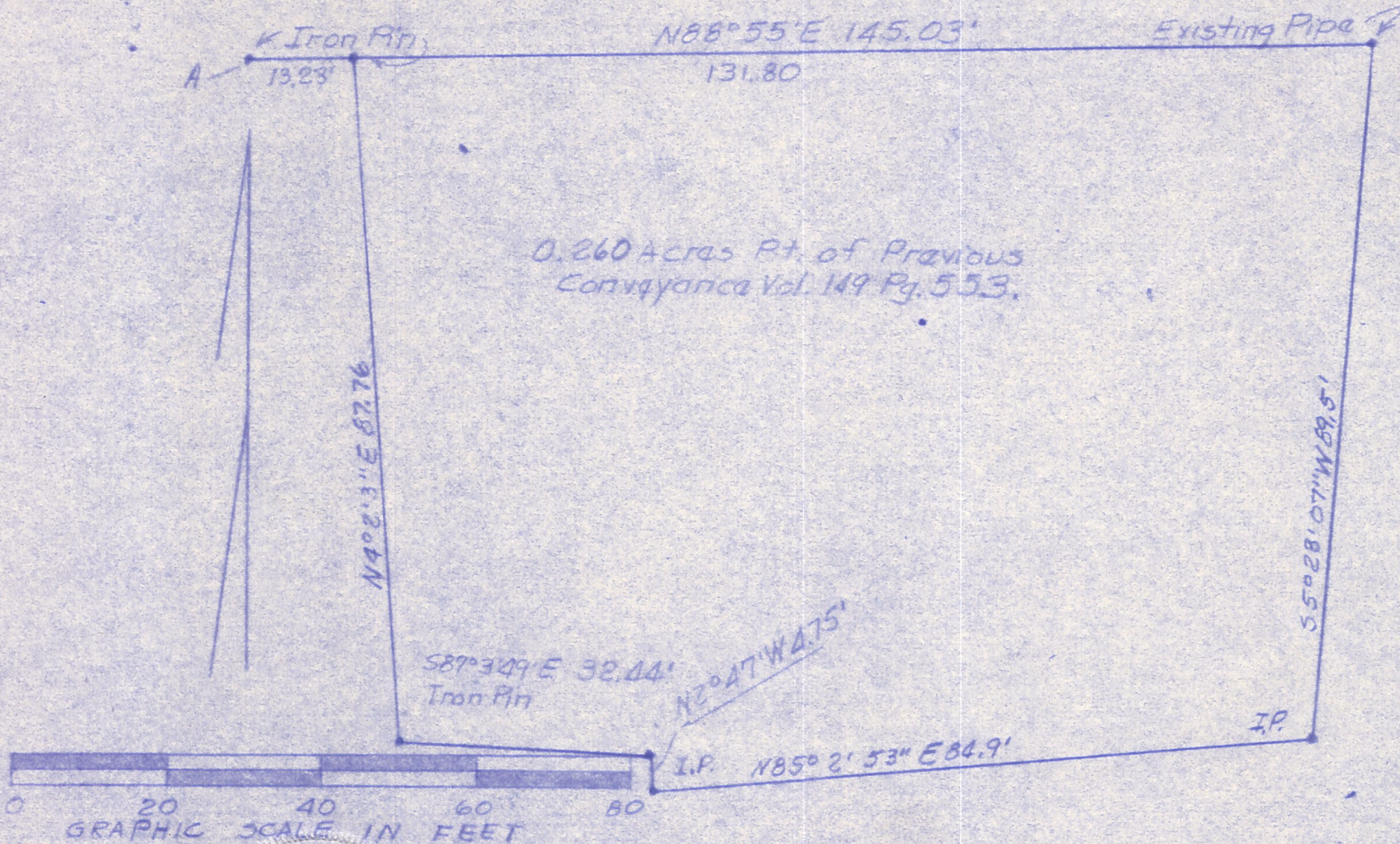


Point A is $S85^{\circ}0'E$ 203.8', $S7^{\circ}40'E$
 252.5' from N.W. corner O.L. 123
 Village of Millersburg, Lot 42 T9N, R7W



0.260 Acres Pt. of Previous
 Conveyance Vol. 149 Pg. 553.



PLAT OF A SURVEY FOR
 WAYNE MCDOWELL
 Situated in Village of Millersburg, Hardy Twp,
 Holmes Co, Ohio. Known as part of O.L. 123,
 Lot 42, T9N, R7W.
 Robert L. Kasner, Registered Surveyor #5193

MAP OFFICE COPY