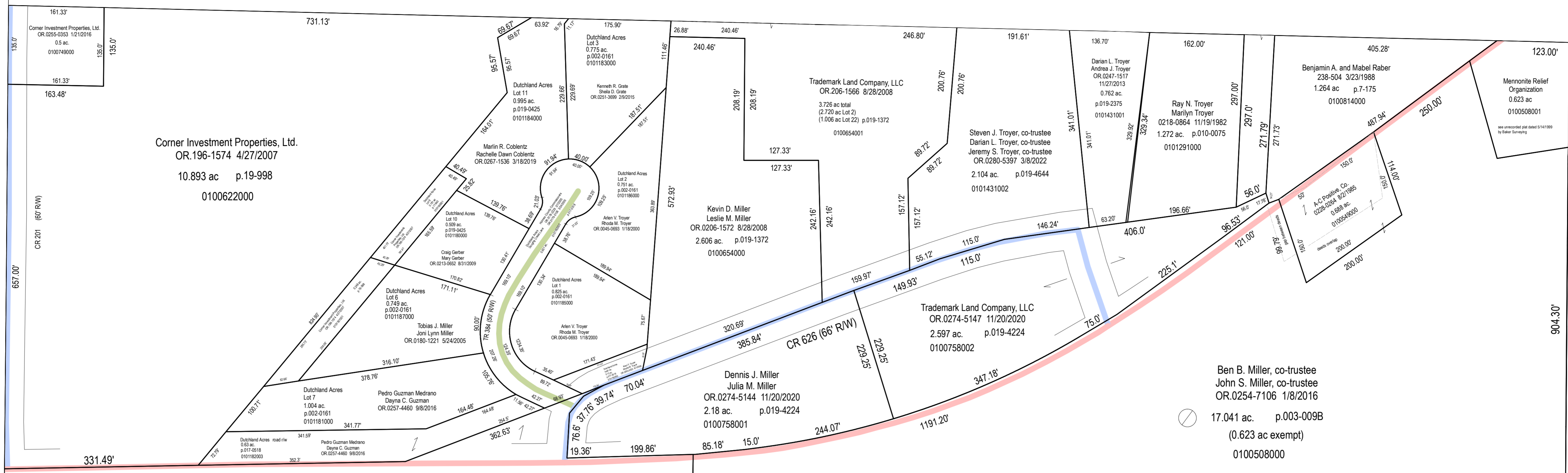


B-13A

B-13B



Corner Investment Properties, Ltd.
 OR.196-1574 4/27/2007
 10.893 ac p.19-998
 0100622000

Dennis J. Miller
 Julia M. Miller
 OR.0274-5144 11/20/2020
 2.18 ac. p.019-4224
 0100758001

Ben B. Miller, co-trustee
 John S. Miller, co-trustee
 OR.0254-7106 1/8/2016
 17.041 ac. p.003-009B
 (0.623 ac exempt)
 0100508000

683.1'
 US 62 and SR 39 (RW varies)

T9 R6 4th Qtr
Lot 2
 B-13D

Ben B. Miller, co-trustee
 John S. Miller, co-trustee
 OR.0254-7106 1/8/2016
 OR.0254-7096 1/8/2016

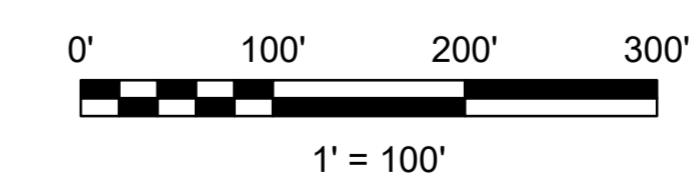
109.62 ac.
 0100507000

B-08

B-13C

B-07

B-12



LET IT BE KNOWN, THIS MAP HAS BEEN PREPARED AS A REFERENCE GUIDE TO PROPERTY OWNERSHIP. WE BELIEVE THIS INFORMATION TO BE CORRECT AND CURRENT, HOWEVER IT IS NOT INTENDED FOR ANY LEGAL USE, WHETHER IT BE SALES, TRANSFERS, TRADES, LEASES OF ANY TYPE, ETC. AND DO NOT ACCEPT RESPONSIBILITY FOR ERRORS OF ANY NATURE OR OMISSIONS CONTAINED HEREIN.

S.F.T.
 new survey required for next transfer

Last Revision: 3/9/2022



Lot 2, 4th Qtr
T-9, R-6
Berlin Twp.
Holmes County, Ohio

B-13D

1737.78'

2627.46'

1833.45'

904.30'