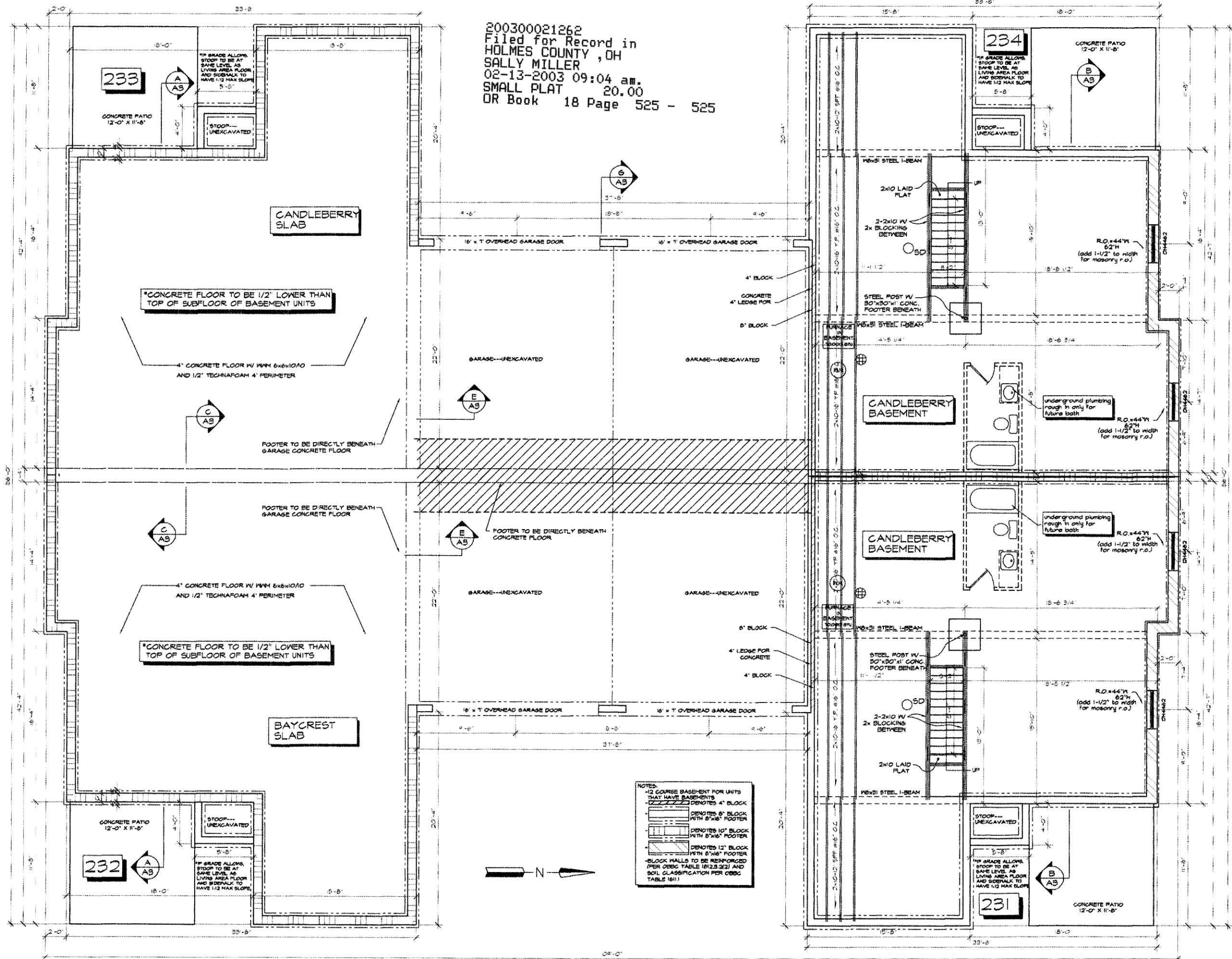


200300021262
 Filed for Record in
 HOLMES COUNTY, OH
 SALLY MILLER
 02-13-2003 09:04 am.
 SMALL PLAT 20.00
 OR Book 18 Page 525 - 525

VOL. 18 PAGE 525



*CONCRETE FLOOR TO BE 1/2" LOWER THAN TOP OF SUBFLOOR OF BASEMENT UNITS

*CONCRETE FLOOR TO BE 1/2" LOWER THAN TOP OF SUBFLOOR OF BASEMENT UNITS

NOTES:
 -12 COURSE BASEMENT FOR UNITS THAT HAVE BASEMENTS
 -DENOTES 4" BLOCK
 -DENOTES 6" BLOCK WITH 8"x8" FOOTER
 -DENOTES 10" BLOCK WITH 8"x8" FOOTER
 -DENOTES 12" BLOCK WITH 8"x8" FOOTER
 -BLOCK WALLS TO BE REINFORCED PER CBC TABLE 1812.3.2(2) AND SOIL CLASSIFICATION PER CBC TABLE 181.1

200300021262
 WAYNE CITY
 TITLE
 WOOSTER, OH

PICKET PLACE---BERLIN, OH---FOUR UNIT CONDO #234
 FOUNDATION PLAN---SCALE: 1/4"=1'



SHEET
 4
 OF 8