



BEARINGS ARE ESTABLISHED FROM TRUE NORTH AND ARE TO DETERMINE ANGULAR MEASUREMENT ONLY.

I CERTIFY THIS PLAT & SURVEY TO BE CORRECT TO THE BEST OF MY KNOWLEDGE:

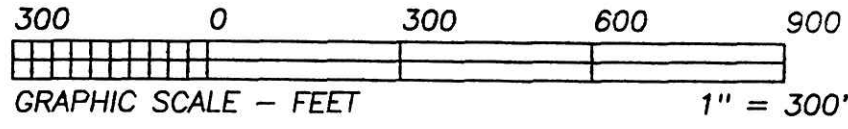
SEPTEMBER 23, 2001

JIM SHAMP, REG. SUR. NO. S-6088 DATE

HEARTLAND SURVEYING, INC

Jim Shamp
5210 T.R. 257 MILLERSBURG, OH 44654
PH: 330-674-4698 FAX: 330-674-0897

- LEGEND:
- = STONE FD.
 - = 5/8" RE-BAR FD. UNLESS NOTED
 - = POINT-OF-DEPARTURE
 - = 5/8" X 30" RE-BAR W/PLASTIC I.D. CAP SET
 - ⊗ = R/R SPIKE SET
 - △ = R/R SPIKE FD.
 - * = I.P. SET ON NORTH SIDE STONE



| | | | | | |
|--|----------|---------------------------------|------|--------|--|
| SURVEY | | DUANE J. & ANNA HOCHSTETLER | | STATE | |
| | | JACOB J. & FANNY M. HOCHSTETLER | | OHIO | |
| COUNTY | TWP. | RNG. | TWP. | | |
| HOLMES | RICHLAND | 8 W | 8 N | | |
| SOUTHEAST & SOUTHWEST QUARTERS OF SECTION 17 | | | | 020904 | |

REFERENCE DOCUMENTS:
TAX MAPS
DEEDS AS SHOWN
SURVEY PLATS:
16/644
6/34

