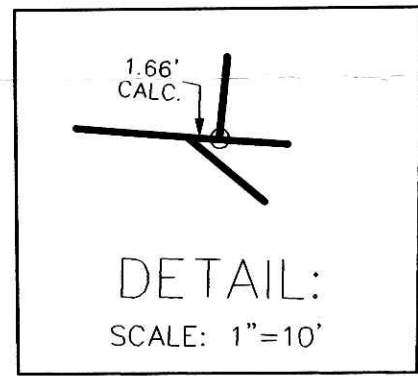


VILLAGE OF MILLERSBURG  
 PART OF OUT 101  
 PART OF LOT 923  
 OF FIRST RUSTIC ACRES SUBDIVISION  
 (P.V. 2A-149)  
 PART OF VACATED STREET (P.V. 1-92  
 AND P.V. 12-483)

HARDY TOWNSHIP  
 N.E. QTR. SEC. 19  
 T-9 N, R-7 W  
 HOLMES COUNTY, OHIO

SURVEYED FOR KURT CLINE

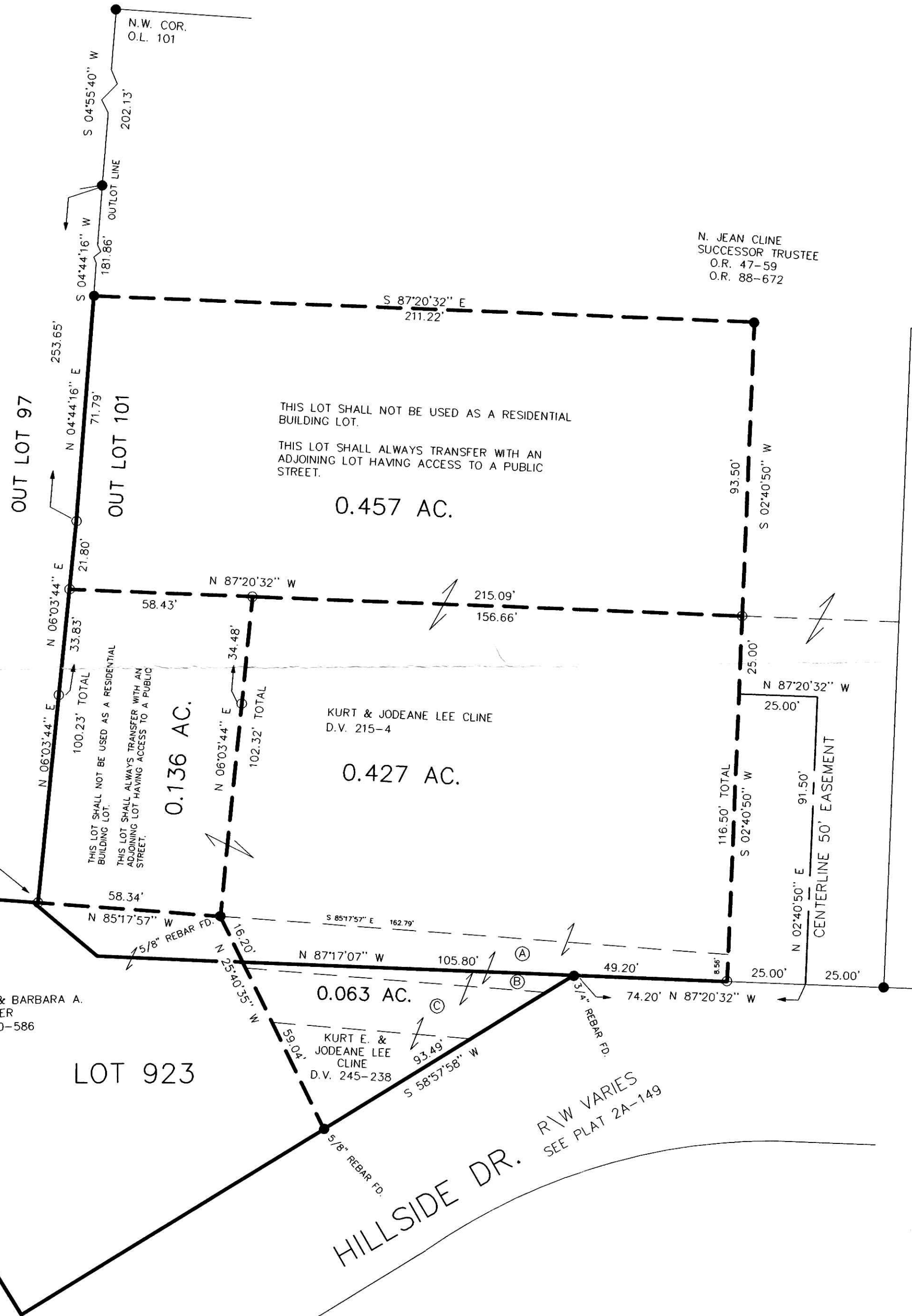
PARCELS (A), (B) AND (C) ARE A PART OF A VACATED  
 STREET. VACATED ORD. 90-106. D.V. 248-67. P.V. 12-483.



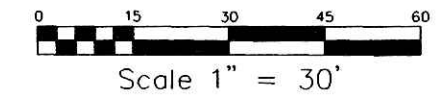
DAVID E. & BARBARA A.  
 CRIDER  
 D.V. 270-586

LOT 923

HILLSIDE DR. R/W VARIES  
 SEE PLAT 2A-149



N. JEAN CLINE  
 SUCCESSOR TRUSTEE  
 O.R. 47-59  
 O.R. 88-672



- 1/2" PIPE FOUND UNLESS OTHERWISE NOTED
- 5/8" REBAR WITH I.D. CAP SET I.D. CAP MARKED "BAKER 6938"

VOL 18 PAGE 421 INDEXED

200200018928  
 Filed for Record in  
 HOLMES COUNTY, OH  
 SALLY MILLER  
 10-25-2002 12:13 pm.  
 PLAT MED 21.60  
 OR Book 18 Page 421 - 421  
 OR vol 126 pages 411 - 414-421

200200018928  
 HEARTLAND TITLE  
 MILLERSBURG, OH 44654

REFERENCES:  
 DEED VOL. 215 PAGE 4  
 DEED VOL. 245 PAGE 238  
 DEED VOL. 270 PAGE 586

O.R. VOL. 88 PAGE 672  
 PLAT VOL. 10 PAGE 466  
 PLAT VOL. 12 PAGE 483  
 PLAT VOL. 10 PAGE 266  
 PLAT VOL. 12 PAGE 369

BEARINGS FROM DEED VOL. 270 PAGE 586



**LOT SPLIT**  
 APPROVED BY THE  
 VILLAGE OF MILLERSBURG  
 PLANNING COMMISSION  
 NO PLAT REQUIRED

*Donald C. Baker*  
 MILLERSBURG  
 PLANNING COMMISSION

DATE: OCTOBER 8, 2002

I CERTIFY THIS SURVEY TO BE CORRECT  
 TO THE BEST OF MY KNOWLEDGE.

*Donald C. Baker*  
 DONALD C. BAKER P.S. 6938

DATE: OCT. 9, 2002  
 File name: C:\JOBS1\S-739-A2

PLAT APPROVED

*10/25/02*

RECEIVED OCT 18 2002

DONALD C. BAKER SURVEYING  
 138 N. CLAY ST.  
 MILLERSBURG, OHIO 44654  
 PH. 330-674-4788  
 FAX 330-674-6027