

Eli J. Troyer  
(DV244, pg.313)

Eli J. Troyer  
(DV244, pg.313)

Roy J. & Alma Troyer  
(DV238, pg.481)

**DEED REFERENCES**  
 (DV186, pg.784)  
 (DV189, pg.740)  
 (DV244, pg.313)  
 (DV219, pg.902)  
 (DV244, pg.313)  
 (DV238, pg.481)  
 Clark Township Tax Map

Daniel F. & Wilma Swartzentruber  
(DV219, pg.902)

2.132 Ac.

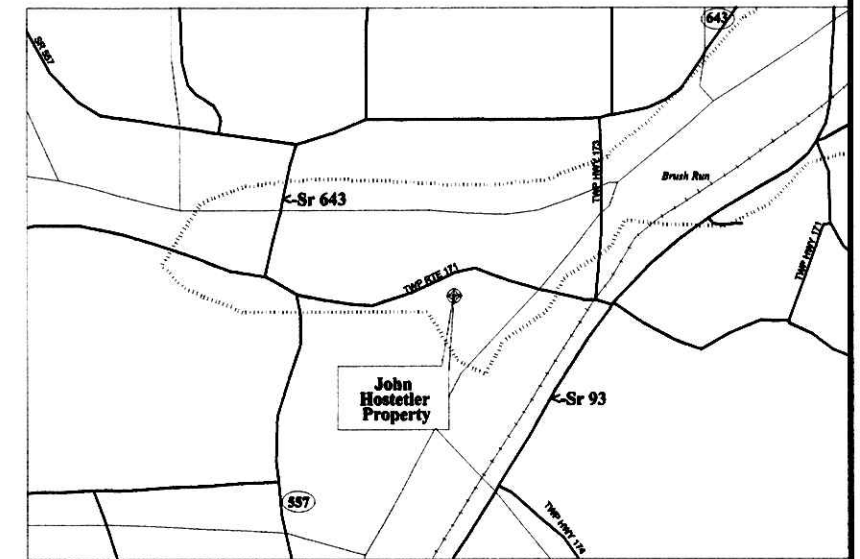
Roy J. & Alma Troyer  
(DV238, pg.481)

200200018716  
 Indexed  
 Filed for Record in  
 HOLMES COUNTY, OH  
 SALLY MILLER  
 10-15-2002 02:20 pm.  
 SMALL PLAT 20.00  
 OR Book 18 Page 412 - 412  
 OR vol 125 page 319

200200018716  
 PAUL A  
 MILLER LAW  
 MILLERSBURG,

Eli J. Troyer  
(DV244, pg.313)

John H. & Anna Hostetler  
(DV186, pg.784)



**LOCATION**  
 John H. & Anna Hostetler  
 Southeast Quarter / Section 16  
 Township 8N / Range 4W  
 Clark Township / Holmes County  
 Ohio

020171  
 APPROVED FOR TRANSFER ONLY  
 NO SUBDIVISION PLAT REQUIRED  
 (O.R.C. 711.001 & 711.131)  
 Lot(s) not for building unless  
 approved by Board of Health.  
 HOLMES CO. PLANNING COMM.

By ASL Date 10/14/02

General Clay Products Corp.  
(DV189, pg.740)

PLAT APPROVED  
 10/7/2002

**CERTIFICATION**

This is to certify that this map or plat is based upon a field survey conducted under my supervision.



George W. Stewart P.S. 6357

**JOHN H. & ANNA HOSTETLER**

**RAVENTECK, LTD.**  
 SURVEYORS  
 20769 COUNTY ROAD #6  
 COSHOCTON, OHIO 43812-9148  
 PHONE: (740) 622-8922 FAX: (740) 623-8865

Scale: 1"=100' Aug. 14, 2002 Sheet 1 of 1

Lot Split Plat B.W.R.

Revisions

True North Azimuth, Solar Observation, +/- 20"