

SURVEY of a 3.143 ACRE PARCEL

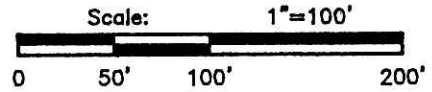
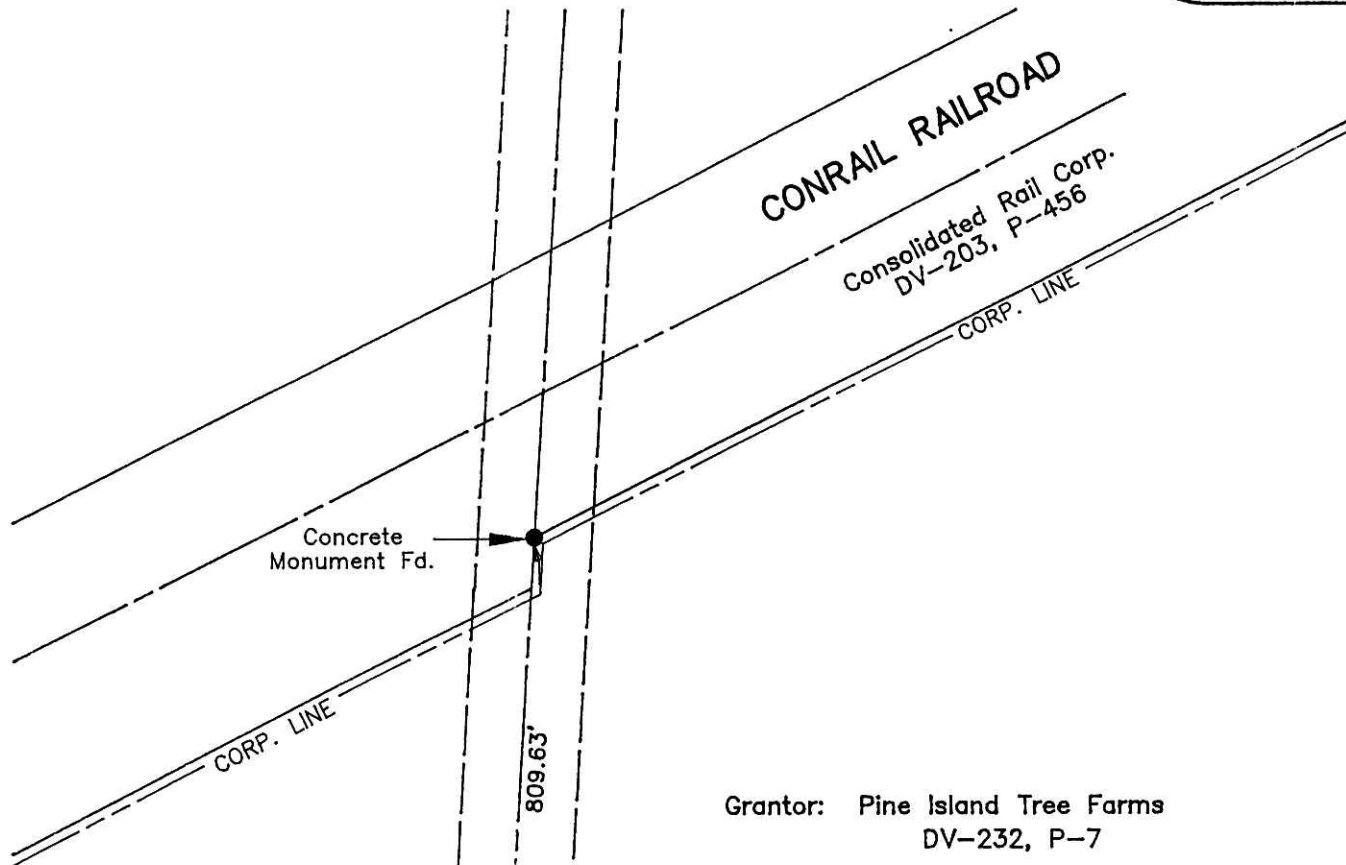
SE QUARTER of SECTION 31
T-20-N, R-15-W
VILLAGE OF LOUDONVILLE
WASHINGTON TOWNSHIP
HOLMES COUNTY, OHIO

VOL 18 PAGE 387

200200018208
Filed for Record in
HOLMES COUNTY, OH
SALLY MILLER
09-17-2002 11:37 am.
SMALL PLAT 20.00
OR Book 18 Page 387 - 387
OR vol 122 page 886

200200018208
HOLMES CTY
TITLE
MILLERSBURG,

INDEXED



- 5/8" Bar Found With Ident Cap "RUDOLPH" Unless Otherwise Noted.
- 5/8" x 30" Bar With Yellow Plastic Cap Marked RUDOLPH Set 6449

Merillat Corporation
OR-40, P-740

TWP. ROAD 457 60'R/W

N 03°38'12"E
207.88'

N 03°38'12"E
506.00'

31
6 6

Set @
30.00'

Set @
30.00'

Grantor: Pine Island Tree Farms
DV-232, P-7

S 86°21'48"E
611.41'

3.143 AC.

675.97'
N 86°21'48"W



S 26°35'27"E
127.10'
S 03°18'00"W
98.06'

Basis of Bearings: Plat Vol.-13, Pg.-195

I Certify This Survey And Plat To Be Correct
To The Best Of My Knowledge.

7-19-02 *Ronald G. Rudolph*
Date Ronald G. Rudolph P.S. No. 6449

PLAT APPROVED

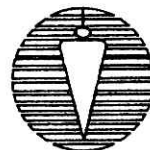
8/7/2002-8

Approved This _____ Day Of _____, 200__ By The Holmes
County Board of Health.

By _____

Approved This 26th Day Of July, 2002 By The
Loudonville Planning Commission

By *Stewart Jody*



R.G. Rudolph
SURVEYING, INC.

223 W. Liberty St.
Wooster, Ohio 44691
(330) 262-0798
Job No. 14377-3

