

**KILLBUCK TOWNSHIP
S.E. & S.W. QTRS. SECTION 21
T-8 N; R-8 W
HOLMES COUNTY, OHIO**

SURVEYED FOR: TOM ARNOLD

REFERENCES:

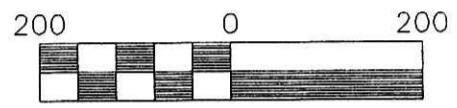
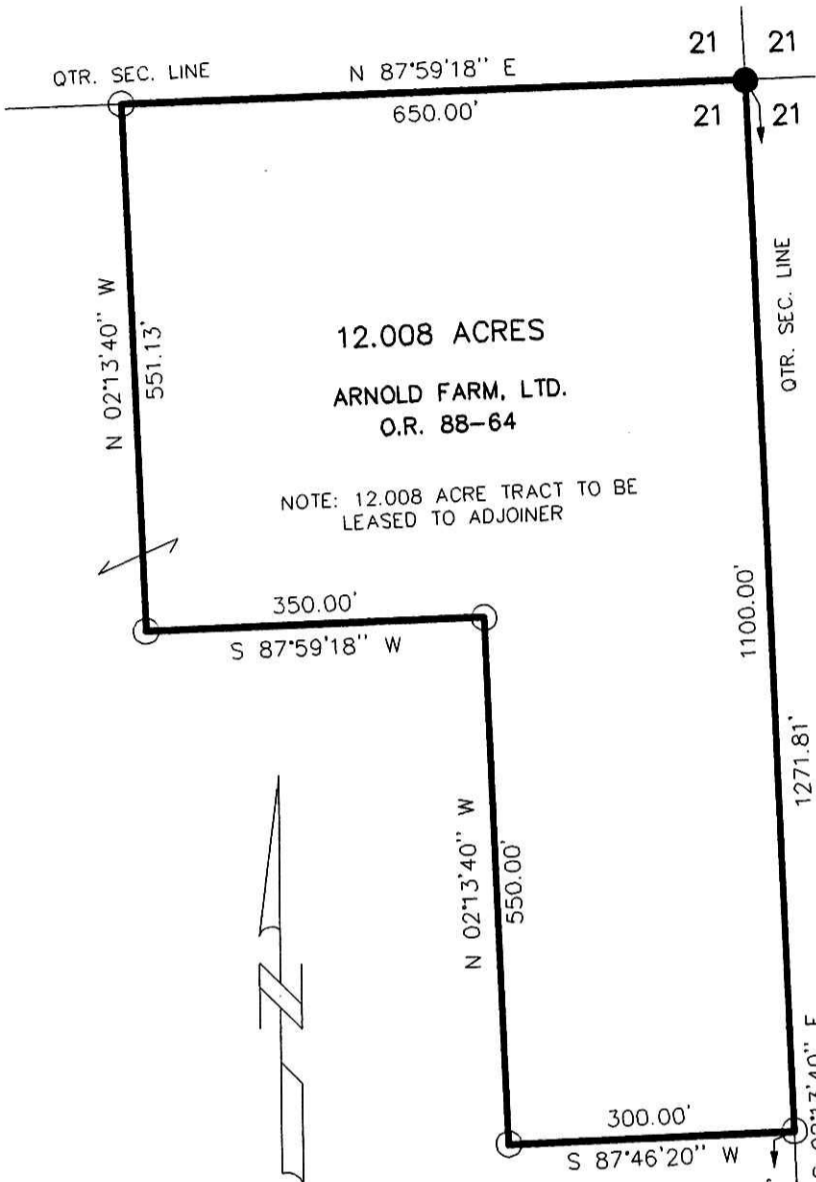
DEED VOL. 210 PAGE 655
O.R. VOL. 33 PAGE 907
O.R. VOL. 88 PAGE 64
PLAT VOL. 17 PAGE 148 & 818
PLAT VOL. 18 PAGE 80

VOL 18 PAGE 347

BEARINGS FROM PLAT VOL 18 PAGE 80

INDEXED

200200017415
Filed for Record in
HOLMES COUNTY, OH
SALLY MILLER
08-02-2002 11:41 am.
SMALL PLAT 20.00
OR Book 18 Page 347 - 347
CRV 119 Page 379



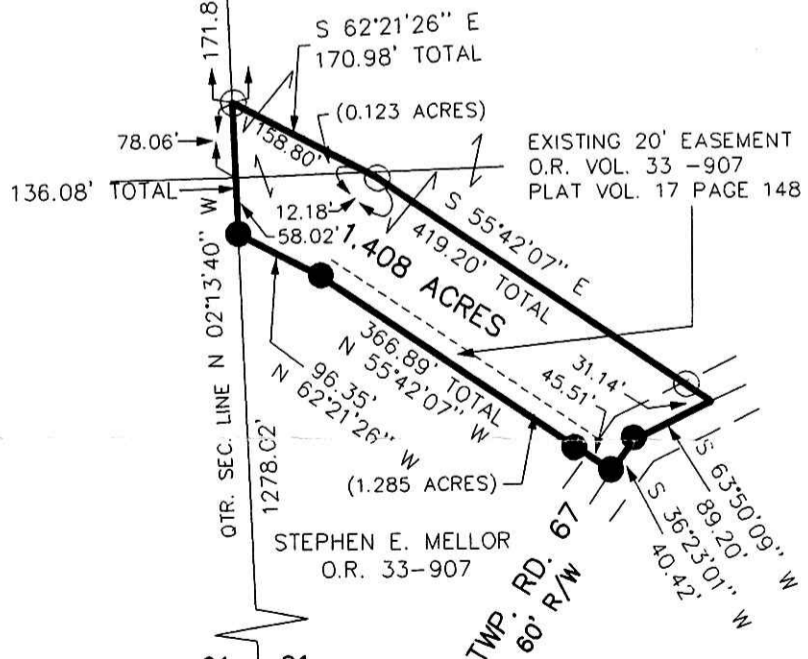
Scale 1" = 200'

- 5/8" REBAR FOUND UNLESS OTHERWISE NOTED
- 5/8" REBAR WITH I.D. CAP SET I.D. CAP MARKED "BAKER 6938"

020131
APPROVED FOR TRANSFER ONLY
NO SUBDIVISION PLAT REQUIRED
(O.R.C. 711.001 & 711.131)
Lot(s) not for building unless
approved by Board of Health.
HOLMES CO. PLANNING COMM.

By AO Date 7/24/02

DONALD G. BUTLER
D.V. 210-655



I CERTIFY THIS SURVEY TO BE CORRECT TO THE BEST OF MY KNOWLEDGE.

Donald C. Baker
DONALD C. BAKER P.S. 6938

FDB\FCC MAY 13, 2002
C:\JOBS1\S-313-02\ERZ

HOLMES COUNTY
COSHOCKTON COUNTY

PLAT APPROVED

7/25/2002



DONALD C. BAKER SURVEYING
138 N. CLAY ST.
MILLERSBURG, OHIO 44654
PH. 330-674-4788
FAX 330-674-6027

200200017415
HEARTLAND TITLE
MILLERSBURG, OH 44654