

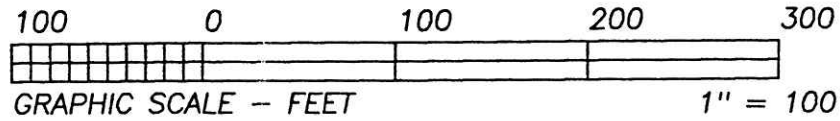
HEARTLAND Surveying, Inc.

Jim Shamp
5210 T.R. 257 MILLERSBURG, OH 44654
PH: 330-674-4698

SURVEY		STATE	
THE INN AT HONEY RUN, INC.		OHIO	
COUNTY	TWP.	RNG.	TWP.
HOLMES	HARDY	6 W	9 N
S.W. QUARTER SECTION 7		8/97 971229	



BEARINGS EST. FROM SUR. PLAT 10/319 AND ARE TO DENOTE ANGULAR MEASUREMENT ONLY.



200200016704
 Filed for Record in
 HOLMES COUNTY, OH
 SALLY MILLER
 06-25-2002 03:47 pm.
 SMALL PLAT 20.00
 OR Book 18 Page 318 - 318
 CR Vol 116 pg 114

I CERTIFY THIS PLAT & SURVEY TO BE CORRECT TO THE BEST OF MY KNOWLEDGE:

REV. 5/21/02
12/22/97



JIM SHAMP, REG. SUR. NO. 6088

DATE

020114
 APPROVED FOR TRANSFER ONLY
 NO SUBDIVISION PLAT REQUIRED
 (O.R.C. 711.001 & 711.131)
 Lot(s) not for building unless
 approved by Board of Health.
 HOLMES CO. PLANNING COMM.

By MS Date 6/20/02

THE INN AT HONEY RUN, INC.
D.V. 233/917

THE INN AT HONEY RUN, INC.
D.V. 263/857

MARJORIE H. STOCK
O.R. 58/573

PAUL E. & LORETTA M.
COBLENTZ, TRUSTEES
O.R. 27/661
O.R. 40/251

- LEGEND:
- = STONE FD.
 - = 5/8" RE-BAR FD. UNLESS NOTED
 - = POINT-OF-DEPARTURE
 - = 5/8" X 30" RE-BAR W/PLASTIC I.D. CAP SET
 - ⊠ = R/R SPIKE SET
 - △ = R/R SPIKE FD.
 - * = 1" PIPE FD.

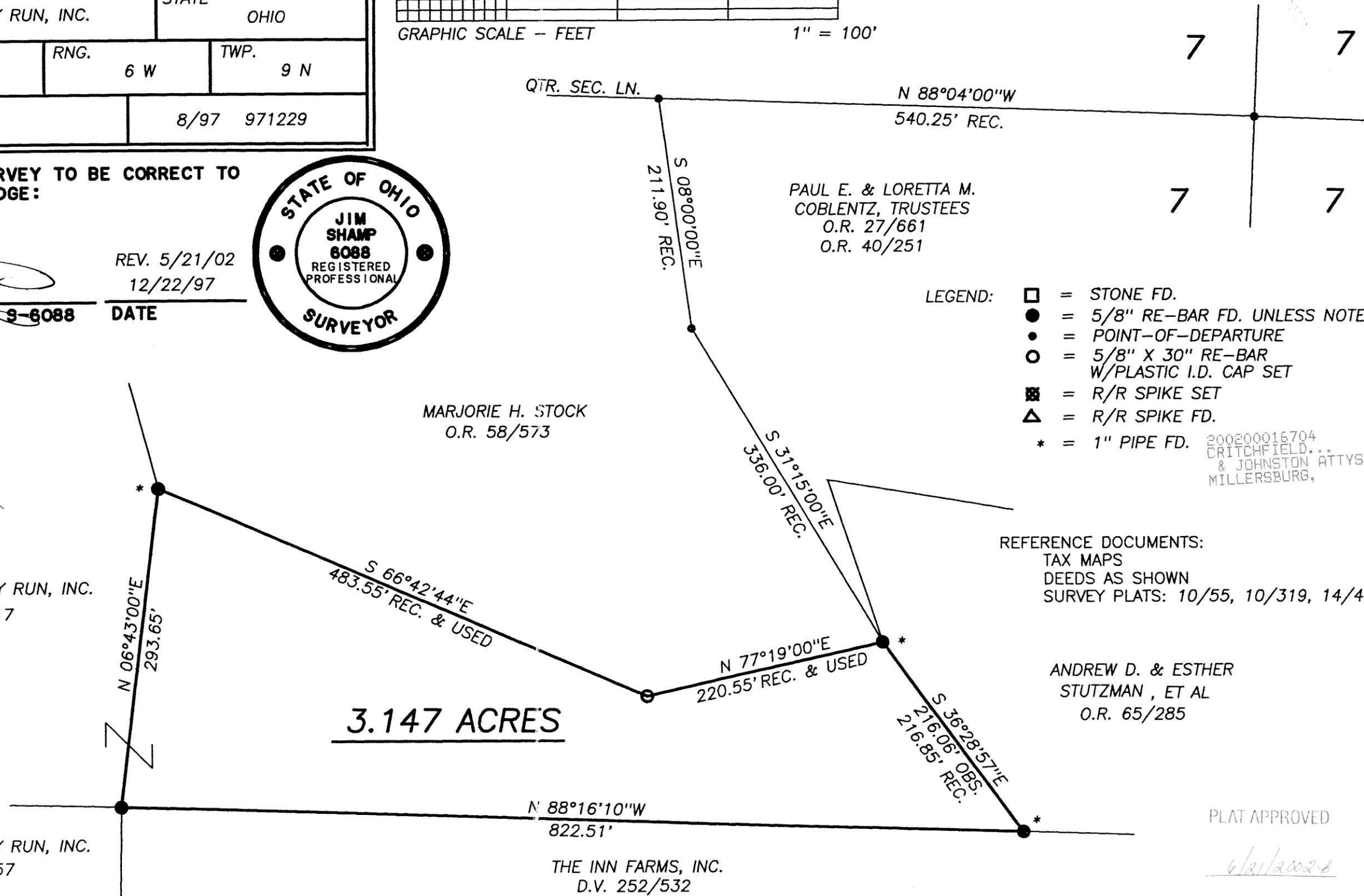
REFERENCE DOCUMENTS:
 TAX MAPS
 DEEDS AS SHOWN
 SURVEY PLATS: 10/55, 10/319, 14/471

ANDREW D. & ESTHER
STUTZMAN, ET AL
O.R. 65/285

200200016704
 CRITCHFIELD...
 & JOHNSTON ATTYS
 MILLERSBURG,

PLAT APPROVED

6/21/2002



3.147 ACRES