

SURVEY of a 4.000 ACRE PARCEL

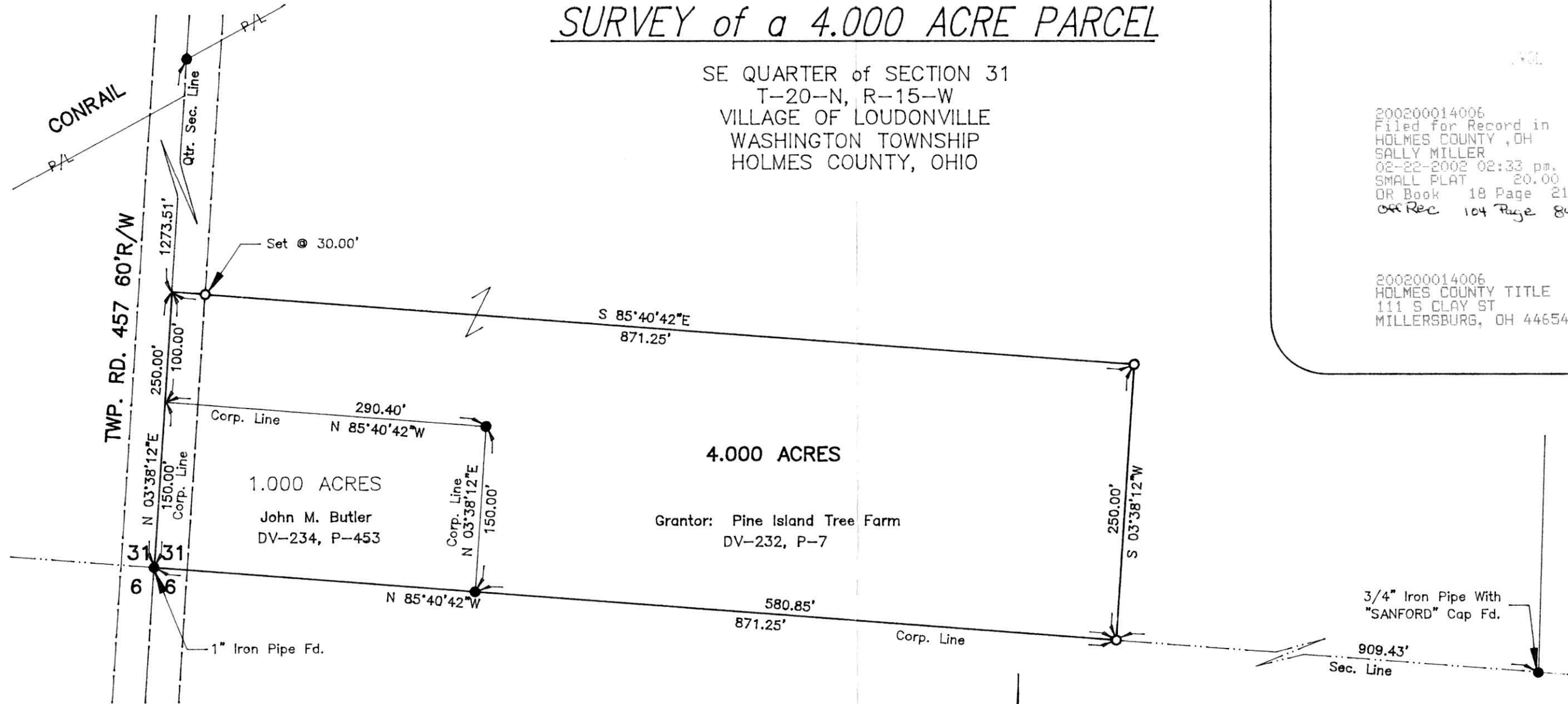
SE QUARTER of SECTION 31
T-20-N, R-15-W
VILLAGE OF LOUDONVILLE
WASHINGTON TOWNSHIP
HOLMES COUNTY, OHIO

VOL 18 PAGE 211

200200014006
Filed for Record in
HOLMES COUNTY, OH
SALLY MILLER
02-22-2002 02:33 pm.
SMALL PLAT 20.00
OR Book 18 Page 211 - 211
OFF Rec 104 Page 848

INDEXED

200200014006
HOLMES COUNTY TITLE
111 S CLAY ST
MILLERSBURG, OH 44654



4.000 ACRES

1.000 ACRES

John M. Butler
DV-234, P-453

Grantor: Pine Island Tree Farm
DV-232, P-7

3/4" Iron Pipe With
"SANFORD" Cap Fd.

Basis of Bearings: Plat Vol.-13, Pg.-195

- 3/4" Iron Pipe Fd. Unless Otherwise Noted.
- 5/8" x 30" Bar With Yellow Plastic Cap Marked RUDOLPH Set 6449



PLAT APPROVED

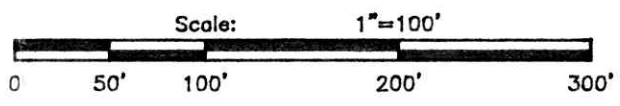
2/22/02 RGR

I Certify This Survey And Plat To Be Correct To The Best Of My Knowledge.

11.15.01 *Ronald G. Rudolph*
Date Ronald G. Rudolph P.S. No. 6449

Approved This 29TH Day Of January, 2002 By The Loudonville Planning Commission.

By *Stewart J. Zody*



R.G. Rudolph
SURVEYING, INC.

223 W. Liberty St.
Wooster, Ohio 44691
(330) 262-0798
Job No. 14377

GR