

RIPLEY TOWNSHIP
 N.E. QTR. SECTION 2
 T-17N; R-14W
 HOLMES COUNTY, OHIO
 (SURVEYED FOR: JONAS KEIM)



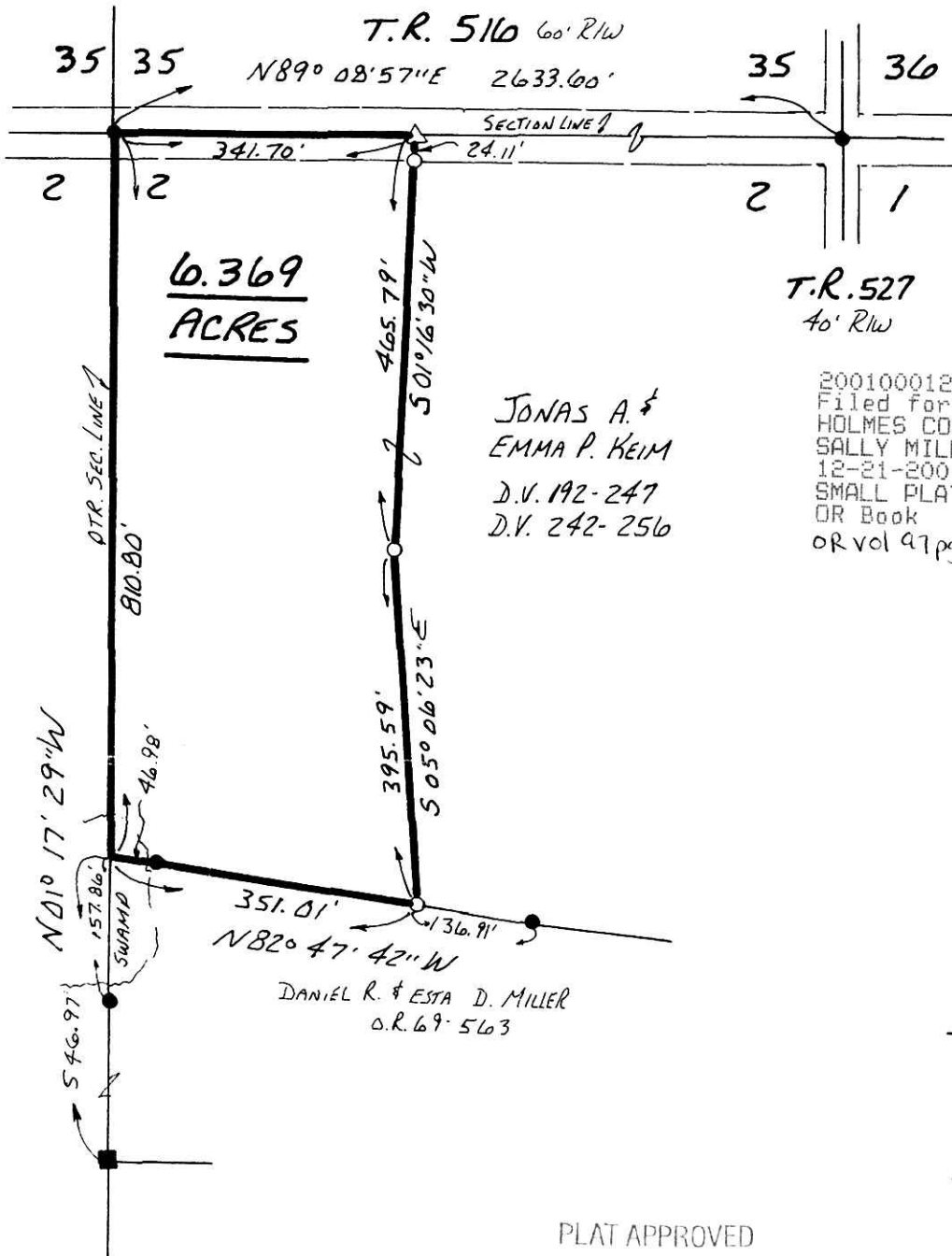
SCALE: 1" = 200'

- STONE FOUND
- IRON PIN FOUND
- △ R.R. SPIKE SET
- 5/8" RE BAR WITH I.D. CAP SET
I.D. CAP MARKED "BAKER 6938"

REFERENCES:

DEED VOL. 192 PAGE 247
 " " 242 " 256
 O.R. VOL. 69 " 563

BEARINGS FROM PLAT VOL. 12
 PAGE 50



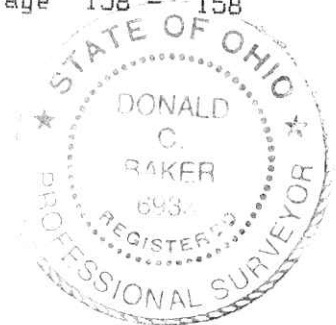
T.R. 527
 40' R/W

6.369
ACRES

JONAS A. &
 EMMA P. KEIM
 D.V. 192-247
 D.V. 242-256

200100012444
 Filed for Record in
 HOLMES COUNTY, OH
 SALLY MILLER
 12-21-2001 12:00 pm.
 SMALL PLAT 20.00
 OR Book 18 Page 158 - 158
 OR vol 47 pg 106

INDEXED



I CERTIFY THIS SURVEY TO BE
 CORRECT TO THE BEST OF MY
 KNOWLEDGE.

Donald C. Baker
 DONALD C. BAKER P.S. 6938

DONALD C. BAKER SURVEYING
 138 N. CLAY ST.
 MILLERSBURG, OHIO 44654
 PH. 330-674-4788

JULY 11, 2001

#50501-M.L.DAVIS
 F.C.C.-F.D. BAKER

PLAT APPROVED

12/26/2001