

MECHANIC TOWNSHIP
N.E. & S.E. QTRS., SECTION 19
T-8 N; R-6 W
HOLMES COUNTY, OHIO

REFERENCES:

DEED VOL. 181 P. 829
DEED VOL. 193 P. 253
DEED VOL. 230 P. 470
DEED VOL. 230 P. 264
DEED VOL. 248 P. 709
DEED VOL. 257 P. 429
DEED VOL. 274 P. 601
DEED VOL. 248 P. 711
DEED VOL. 278 P. 373

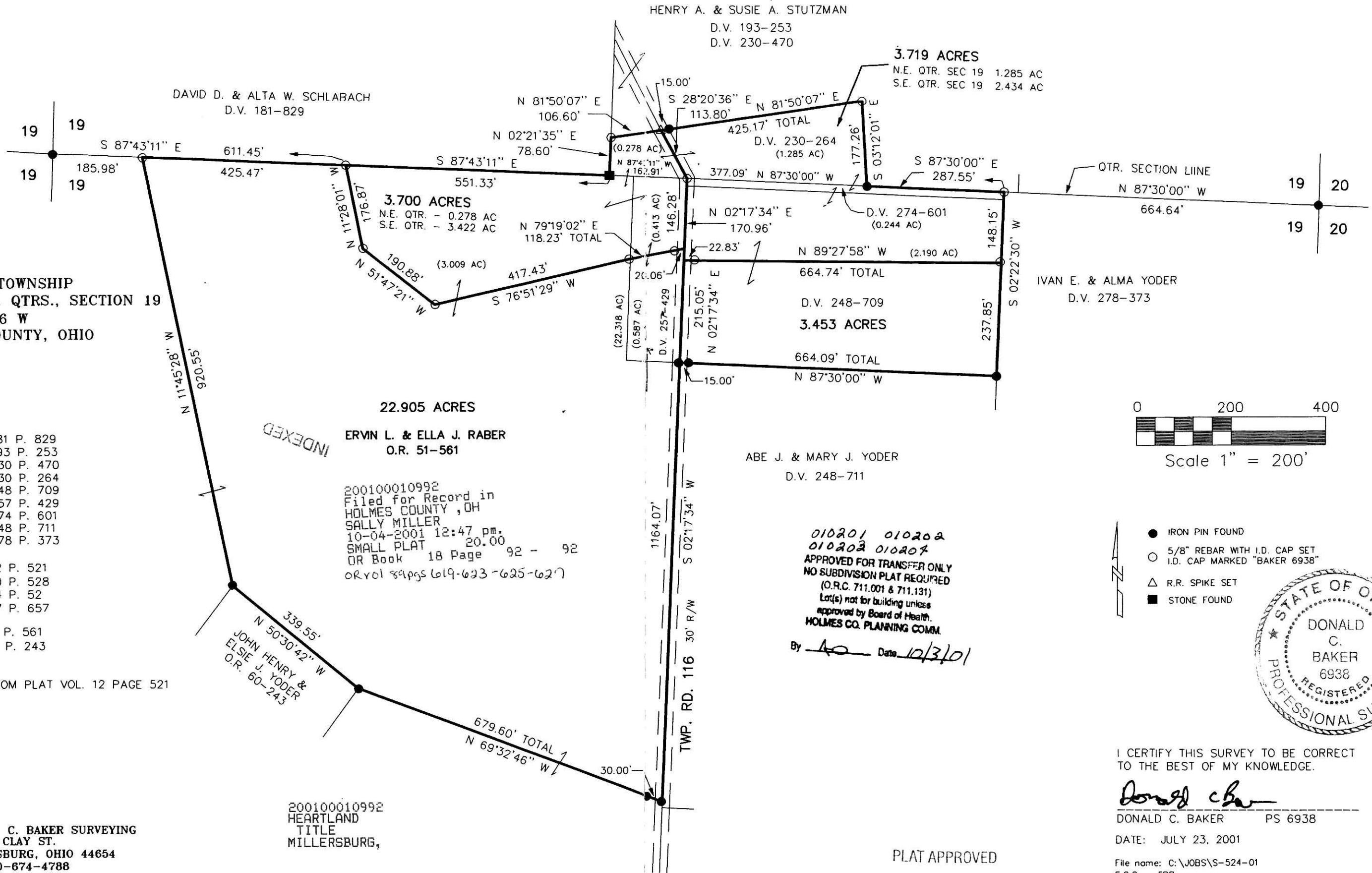
PLAT VOL. 12 P. 521
PLAT VOL. 10 P. 528
PLAT VOL. 14 P. 52
PLAT VOL. 17 P. 657

O.R. VOL. 51 P. 561
O.R. VOL. 60 P. 243

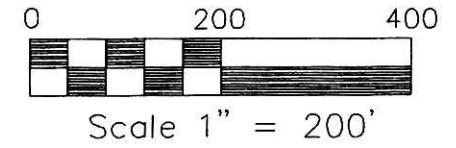
BEARINGS FROM PLAT VOL. 12 PAGE 521

DONALD C. BAKER SURVEYING
138 N. CLAY ST.
MILLERSBURG, OHIO 44654
PH. 330-674-4788
FAX 330-674-6027

200100010992
HEARTLAND
TITLE
MILLERSBURG,



INDEXED



- IRON PIN FOUND
- 5/8" REBAR WITH I.D. CAP SET
I.D. CAP MARKED "BAKER 6938"
- △ R.R. SPIKE SET
- STONE FOUND



010201 010202
010203 010204
APPROVED FOR TRANSFER ONLY
NO SUBDIVISION PLAT REQUIRED
(O.R.C. 711.001 & 711.131)
Lot(s) not for building unless
approved by Board of Health.
HOLMES CO. PLANNING COMM.
By Date 10/3/01

I CERTIFY THIS SURVEY TO BE CORRECT
TO THE BEST OF MY KNOWLEDGE.

Donald C. Baker
DONALD C. BAKER PS 6938

DATE: JULY 23, 2001

File name: C:\JOBS\S-524-01
F.C.C. - FDB

PLAT APPROVED

10/4/2001