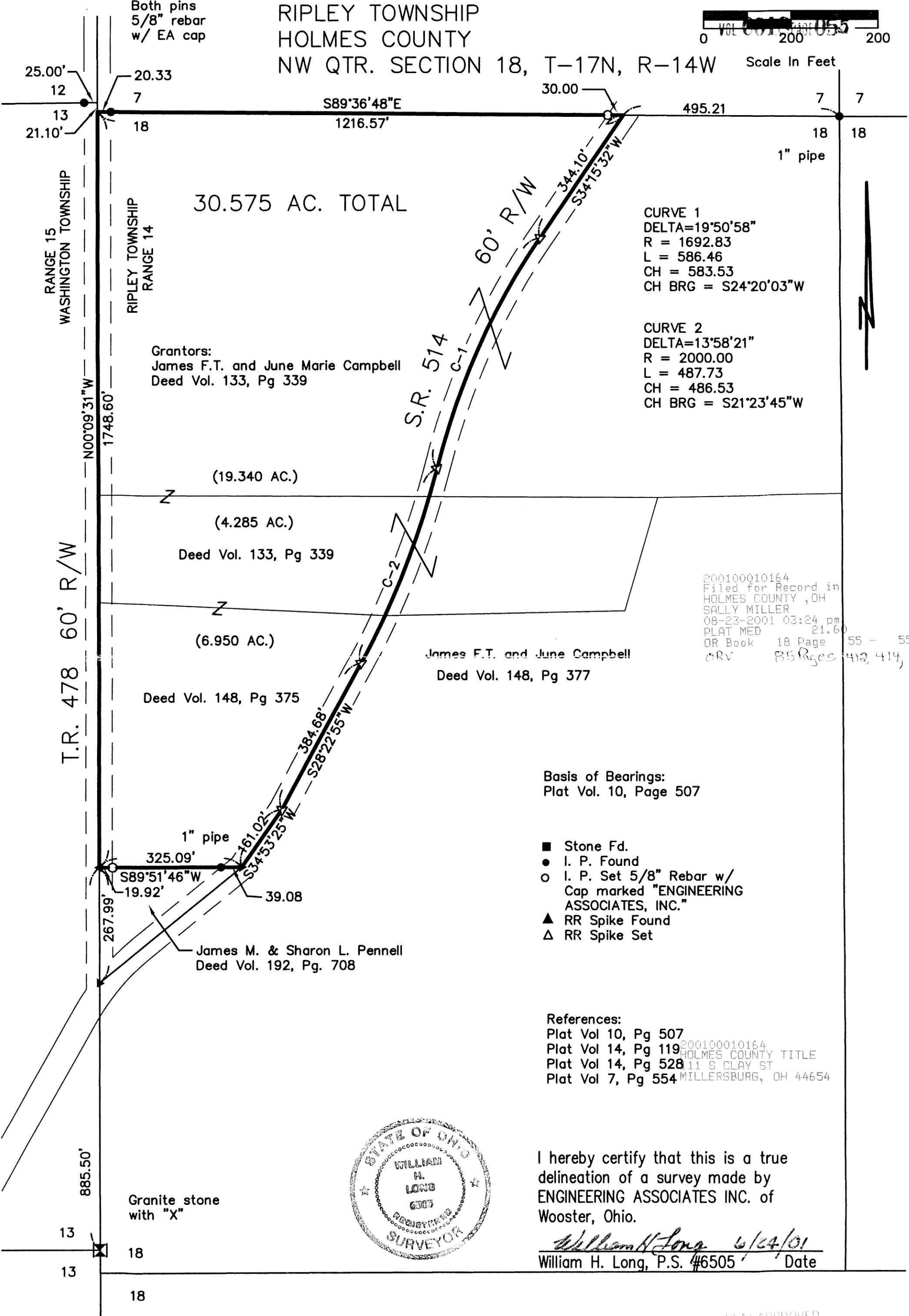




RIPLEY TOWNSHIP  
HOLMES COUNTY  
NW QTR. SECTION 18, T-17N, R-14W

Scale In Feet



Grantors:  
James F.T. and June Marie Campbell  
Deed Vol. 133, Pg 339

(19.340 AC.)

(4.285 AC.)

Deed Vol. 133, Pg 339

(6.950 AC.)

Deed Vol. 148, Pg 375

James F.T. and June Campbell  
Deed Vol. 148, Pg 377

James M. & Sharon L. Pennell  
Deed Vol. 192, Pg. 708

200100010164  
Filed for Record in  
HOLMES COUNTY, OH  
SALLY MILLER  
08-23-2001 03:24 pm  
PLAT MED 21.60  
DR Book 18 Page 55 - 55  
ORV 85 Rges 412, 414,

Basis of Bearings:  
Plat Vol. 10, Page 507

- Stone Fd.
- I. P. Found
- I. P. Set 5/8" Rebar w/  
Cap marked "ENGINEERING  
ASSOCIATES, INC."
- ▲ RR Spike Found
- △ RR Spike Set

References:  
Plat Vol 10, Pg 507  
Plat Vol 14, Pg 119  
Plat Vol 14, Pg 528  
Plat Vol 7, Pg 554



I hereby certify that this is a true  
delineation of a survey made by  
ENGINEERING ASSOCIATES INC. of  
Wooster, Ohio.

*William H. Long* 6/24/01  
William H. Long, P.S. #6505 Date

PLAT APPROVED