



SCALE: 1" = 200'

- IRON PIN FOUND
- 5/8" RE BAR WITH I.D. CAP SET
- I.D. CAP MARKED "BAKER 6938"



I CERTIFY THIS SURVEY TO BE CORRECT TO THE BEST OF MY KNOWLEDGE.

Donald C. Baker
 DONALD C. BAKER P.S. 6938
 DONALD C. BAKER SURVEYING
 138 N. CLAY ST.
 MILLERSBURG, OHIO 44654
 PH. 330-674-4788

MAY 25, 2001

#36401 - M.L. DAVIS
 F.C.C. - F.D. BAKER

PLAT APPROVED

6/14/2001

RIPLEY TOWNSHIP
 N.W. QTR. SECTION 3
 T-17N; R-14W
 HOLMES COUNTY, OHIO
 SURVEYED FOR: BRUCE TATE

REFERENCES:

O.R. Vol. 70 PAGE 539
 DEED Vol. 228 PAGE 875

BEARINGS FROM PLAT Vol. 9 PAGE 151

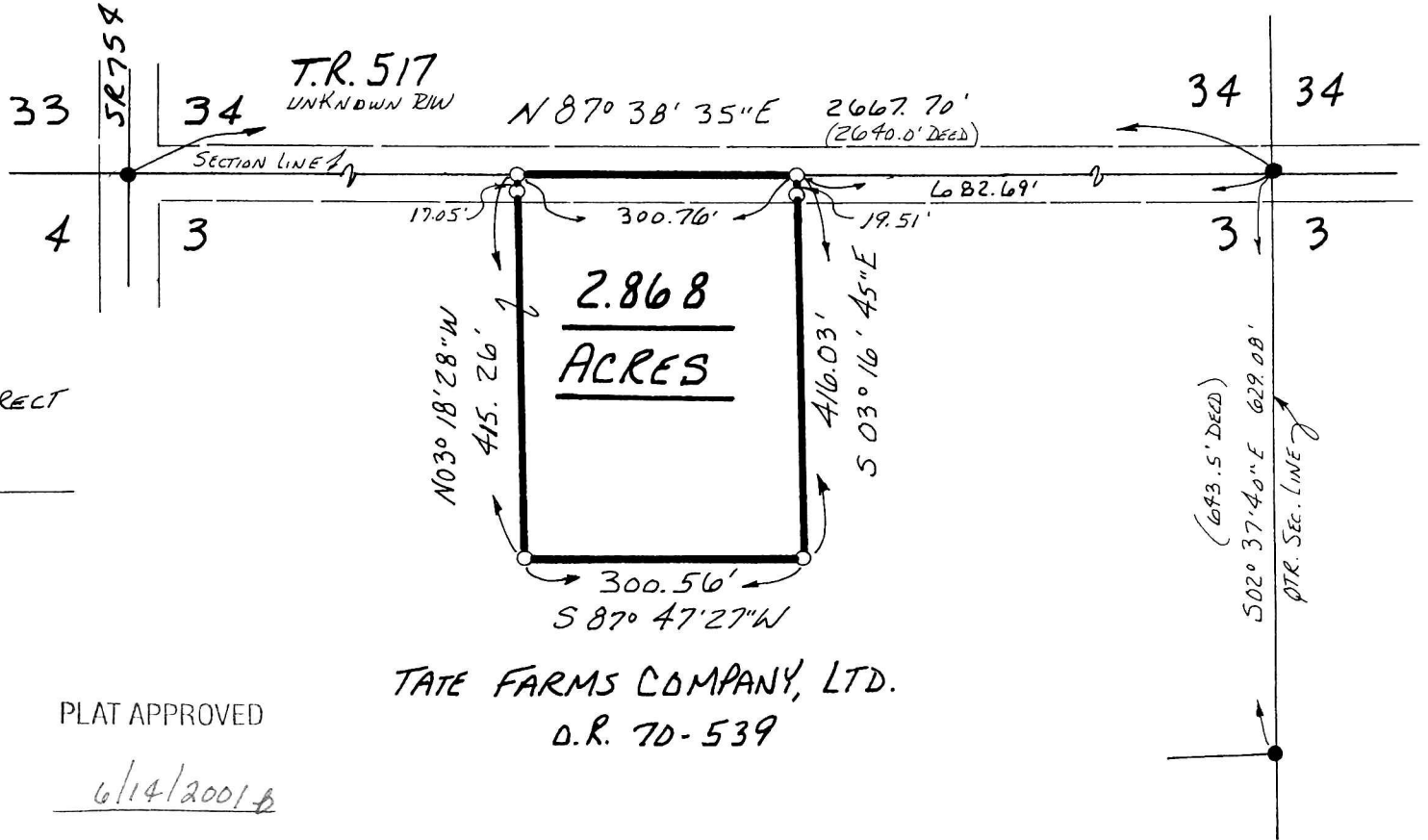
200100008720
 Filed for Record in
 HOLMES COUNTY, OH
 SALLY MILLER
 06-14-2001 01:47 pm.
 SMALL PLAT 20.00
 OR Book 17 Page 897 - 897
 OR vol 78 pg 263

010135
 APPROVED FOR TRANSFER ONLY
 NO SUBDIVISION PLAT REQUIRED
 (O.R.C. 711.001 & 711.131)
 Lot(s) not for building unless
 approved by Board of Health.
 HOLMES CO. PLANNING COMM.

By *AT* Date *6/13/01*

Paul Miller Law Office
 Millersburg OH 44654

INDEXED



TATE FARMS COMPANY, LTD.
 O.R. 70-539