

8 7
13 12

7 6
12 11

VOL 17 PAGE 698

REFERENCES:

- DEED VOL. 279 P. 68
- DEED VOL. 208 P. 233
- DEED VOL. 218 P. 68
- DEED VOL. 239 P. 270
- DEED VOL. 279 P. 72
- DEED VOL. 241 P. 141
- PLAT VOL. 12 P. 6
- PLAT VOL. 14 P. 832
- PLAT VOL. 8 P. 540
- PLAT VOL. 7 P. 703
- PLAT VOL. 10 P. 313
- PLAT VOL. 12 P. 285
- PLAT VOL. 4 P. 93

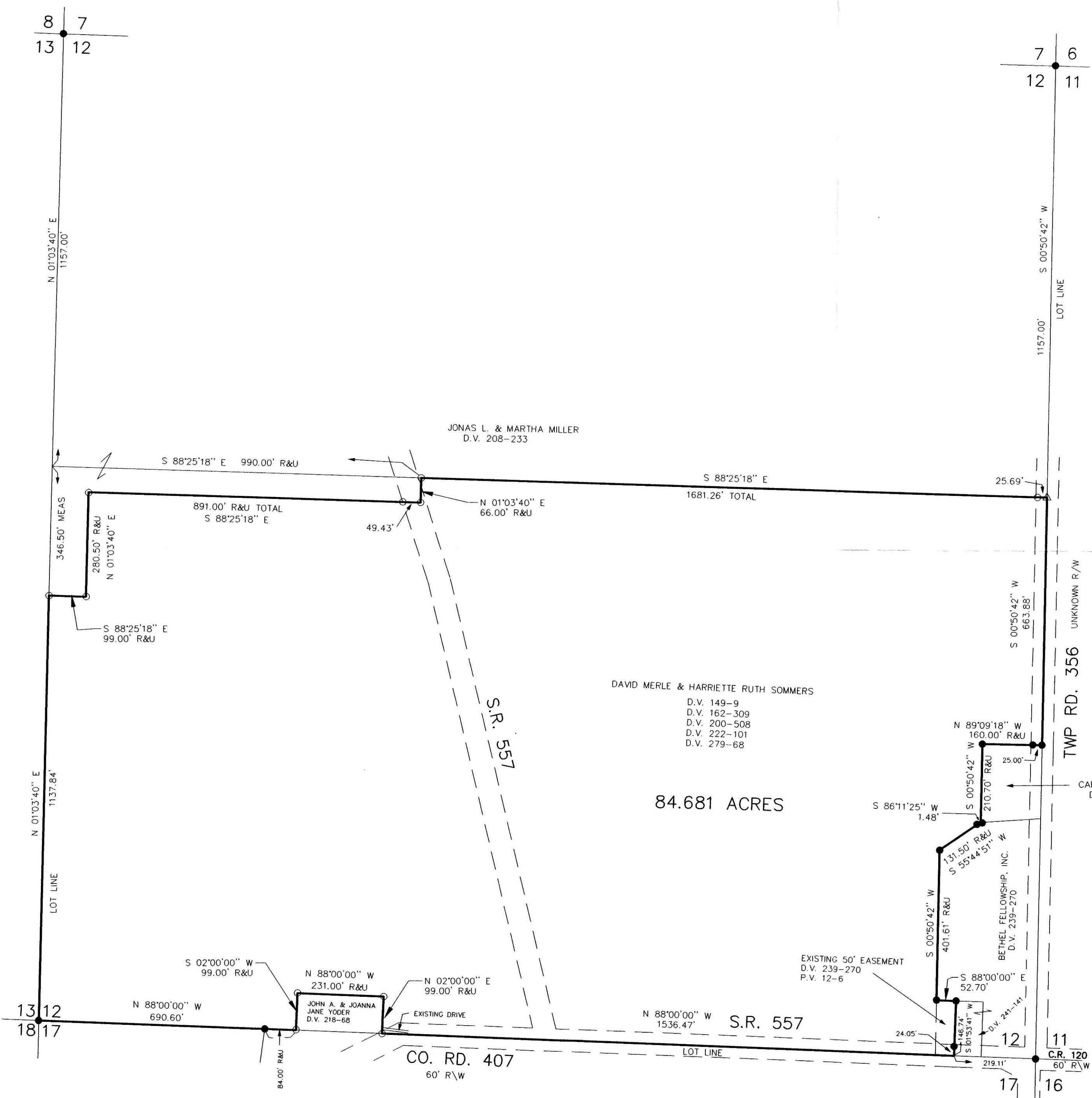
200000005073
 Filed for Record in
 HOLMES COUNTY, OH
 SALLY MILLER
 On 11-16-2000 At 12:02 pm.
 PLAT MED 21.60
 OR Book 17 Page 698 - 698
 OR vol 62 pg 509

BEARINGS FROM PLAT VOL. 12 PAGE 6

SURVEYED FOR MERLE SOMMERS

200000005073
 LOGEE... &
 LEHMAN ATTYS
 WOOSTER, OH

RESURVEY OF DEED VOL. 279 PAGE 68



DAVID MERLE & HARRIETTE RUTH SOMMERS
 D.V. 149-9
 D.V. 162-309
 D.V. 200-508
 D.V. 222-101
 D.V. 279-68

84.681 ACRES



I CERTIFY THIS SURVEY TO BE CORRECT
 TO THE BEST OF MY KNOWLEDGE.

Donald C. Baker
 DONALD C. BAKER PS 6938

DATE: MAY 16, 2000

DCB / F.C.C. - FDB/ File name: C:\JOBS\S-233-00

<ul style="list-style-type: none"> ● IRON PIN FOUND ○ 5/8" REBAR WITH I.D. CAP SET ○ I.D. CAP MARKED "BAKER 6938" △ R.R. SPIKE SET R&U RECORD & USED 	<p>BERLIN TOWNSHIP THE FOURTH QTR. LOT 12 T-9 N; R-6 W HOLMES COUNTY, OHIO</p>
<p>● DONALD C. BAKER SURVEYING 138 N. CLAY ST. MILLERSBURG, OHIO 44654 PH. 330-674-4788 FAX 330-674-6027</p>	<p>Scale 1" = 200'</p>

PLAT APPROVED

10/19/2000