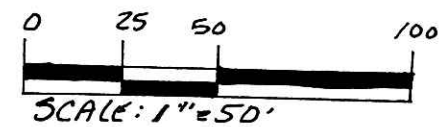


SURVEY OF A 0.237 ACRE EASEMENT

VOL 17 PAGE 520

VILLAGE OF MILLERSBURG
 HARDY TOWNSHIP
 N.E. QTR. SECTION 22
 T-9N; R-7W
 HOLMES COUNTY, OHIO
 (SURVEYED FOR: LILA PROPERTIES, LTD)

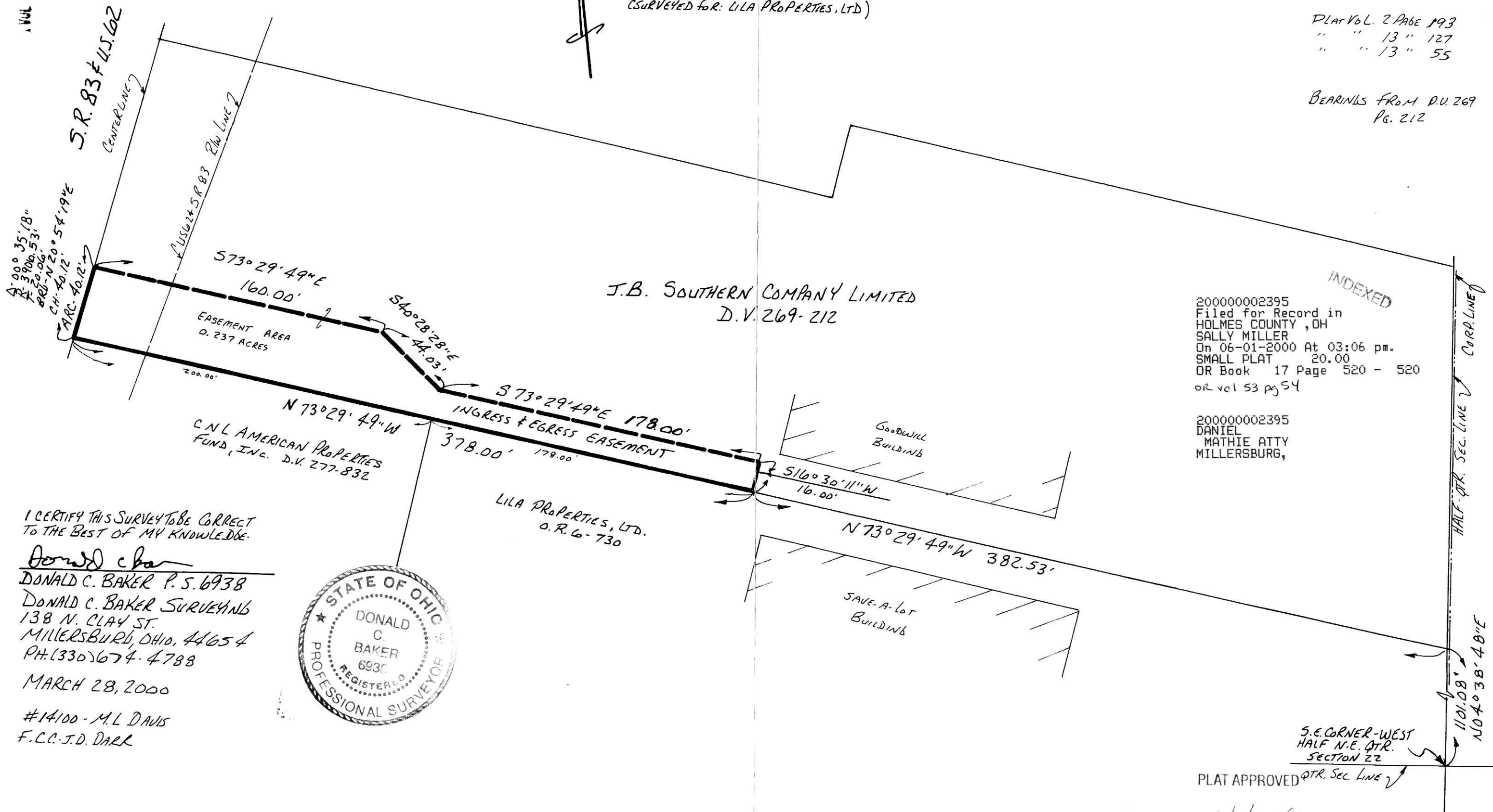


REFERENCES:
 DEED VOL. 269 PAGE 212
 " " 277 " 832

O.R. VOL. 6 PAGE 730

PLAT VOL. 2 PAGE 193
 " " 13 " 127
 " " 13 " 55

BEARINGS FROM D.U. 269
 PG. 212



J.B. SOUTHERN COMPANY LIMITED
 D.V. 269-212

C.N.L. AMERICAN PROPERTIES
 FUND, INC. D.V. 277-832

LILA PROPERTIES, LTD.
 O.R. 6-730

INDEXED
 200000002395
 Filed for Record in
 HOLMES COUNTY, OH
 SALLY MILLER
 On 06-01-2000 At 03:06 pm.
 SMALL PLAT 20.00
 OR Book 17 Page 520 - 520
 or vol 53 pg 54

200000002395
 DANIEL
 MATHIE ATTY
 MILLERSBURG,

I CERTIFY THIS SURVEY TO BE CORRECT
 TO THE BEST OF MY KNOWLEDGE.

Donald C. Baker
 DONALD C. BAKER P.S. 6938
 DONALD C. BAKER SURVEYING
 138 N. CLAY ST.
 MILLERSBURG, OHIO, 44654
 PH: (330) 674-4788



MARCH 28, 2000
 #14100 - M.L. DAVIS
 F.C.C.-J.D. DARR

PLAT APPROVED

6/1/00