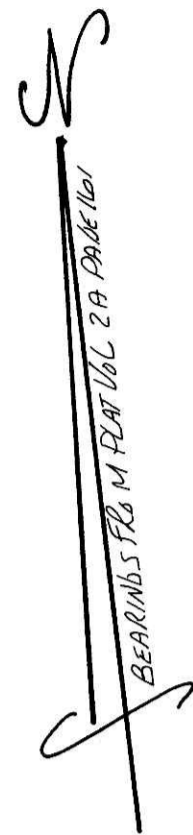


BERLIN TOWNSHIP
 4TH. QTR. LOT 2
 T-9N; R-6W
 HOLMES COUNTY, OHIO
 (SURVEYED FOR: LeROY & SUE MULLET)

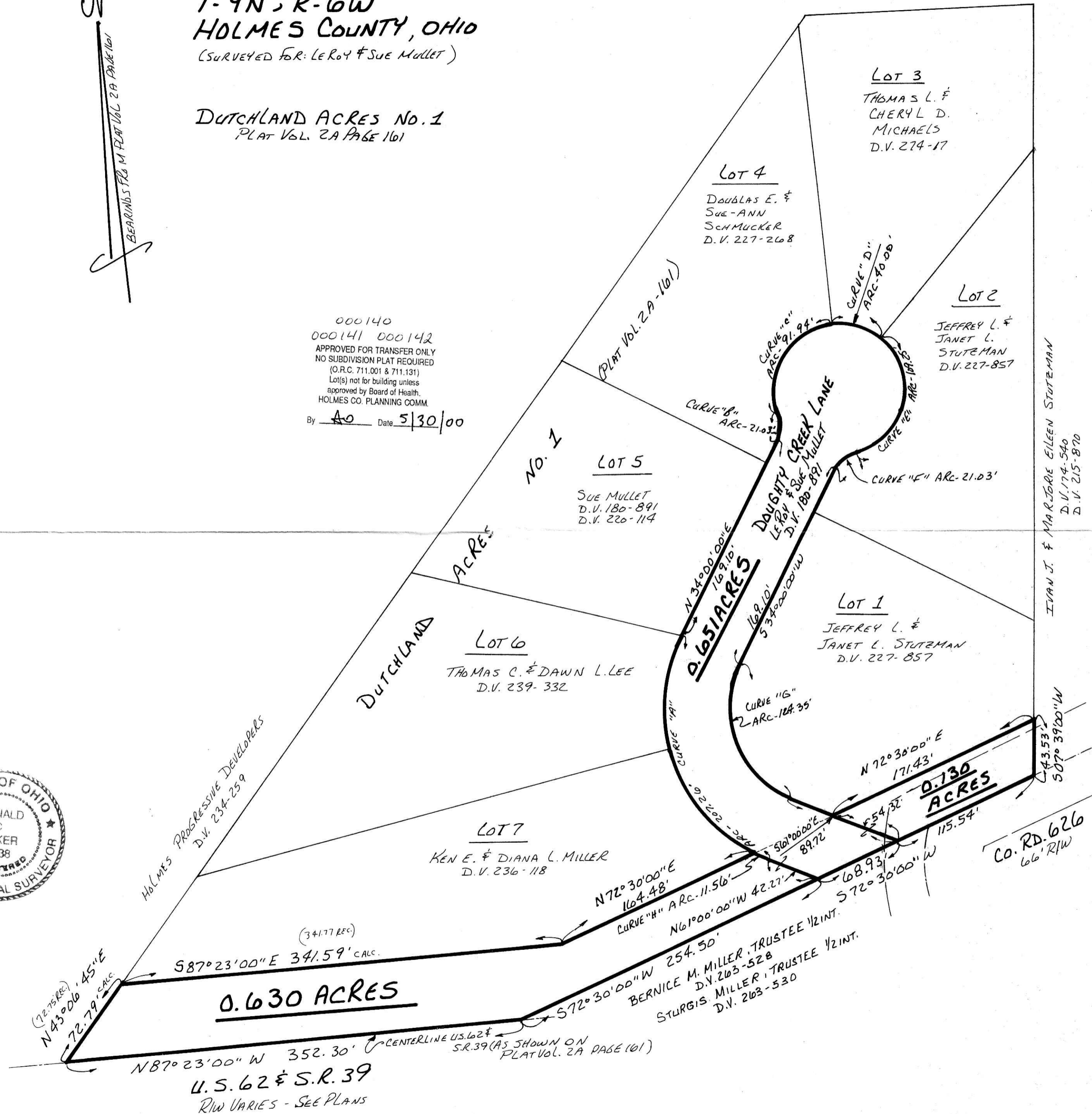
DUTCHLAND ACRES No. 1
 PLAT VOL. 2A PAGE 161

CURVE DATA

CURVE "A" Δ- 95°00'00" R- 125.00' ARC- 207.26' T- 136.41' CH- 184.32' BR6- N 13°36'00"W	CURVE "E" Δ- 125°11'23" R- 50.00' ARC- 109.25' T- 96.44' CH- 88.78' BR6- S 19°35'42"W
CURVE "B" Δ- 48°11'23" R- 25.00' ARC- 21.03' T- 11.18' CH- 20.41' BR6- N 09°54'19"E	CURVE "F" Δ- 48°11'23" R- 25.00' ARC- 21.03' T- 11.18' CH- 20.41' BR6- S 58°05'42"W
CURVE "C" Δ- 105°21'12" R- 50.00' ARC- 91.94' T- 65.58' CH- 79.52' BR6- N 38°29'13"E	CURVE "G" Δ- 95°00'00" R- 75.00' ARC- 124.35' T- 81.85' CH- 110.59' BR6- S 13°30'00"E
CURVE "D" Δ- 45°50'11" R- 50.00' ARC- 40.00' T- 21.14' CH- 38.94' BR6- S 65°55'06"E	CURVE "H" Δ- 05°17'52" R- 125.00' ARC- 11.56' T- 5.78' CH- 11.55' BR6- S 58°21'04"E



000140
 000141 000142
 APPROVED FOR TRANSFER ONLY
 NO SUBDIVISION PLAT REQUIRED
 (O.R.C. 711.001 & 711.131)
 Lot(s) not for building unless
 approved by Board of Health,
 HOLMES CO. PLANNING COMM.
 By AO Date 5/30/00



NOTE:
 ALL INFORMATION SHOWN ON THIS PLAT
 TAKEN FROM PLAT VOL. 2A PAGE 161



I CERTIFY THIS PLAT TO BE CORRECT
 TO THE BEST OF MY KNOWLEDGE.

Donald C. Baker
 DONALD C. BAKER P. S. 6938
 138 N. CLAY ST.
 MILLERSBURG, OHIO 44654
 PH (330) 674-4788

DECEMBER 3, 1999
 #8499- M.L. DAVIS
 #83699- M.L. DAVIS

200000002382
 Filed for Record in
 HOLMES COUNTY, OH
 SALLY MILLER
 On 06-01-2000 At 11:59 am.
 PLAT MED 21.60
 OR Book 17 Page 518 - 518
 or vol 53 pgs 22-24-27

200000002382
 PAUL
 MILLER LAW
 MILLERSBURG,

PLAT APPROVED

Caliloo