

SCALE: 1"=100'

- STONE FOUND
- ▲ R.R. SPIKE FOUND
- IRON PIN FOUND
- △ R.R. SPIKE SET
- 5/8" RE BAR WITH I.D. CAP SET
- I.D. CAP MARKED "BAKER 6938"

**HARDY TOWNSHIP**  
**2ND. QTR. LOTS 11 & 22**  
**T-9N R-7W**  
**HOLMES COUNTY, OHIO**  
 (SURVEYED FOR: BANDS CO., INC.)

**REFERENCES:**

DEED VOL. 272 PAGE 588  
 " " 273 " 513  
 " " 186 " 339  
 PLAT VOL. 16 PAGE 43  
 " " 16 " 101

9800005791  
 Filed for Record in  
 HOLMES COUNTY, OH  
 SALLY MILLER  
 On 12-01-1998 At 11:07 am.  
 PLAT MED 21.60  
 Book OR Vol. 16 Pg. 940 - 940  
 Off. Rec. Vol. 21 Pg. 390

INDEXED

16 940

**CURVE DATA**

**CURVE "A"**  
 $\Delta = 74^{\circ}42'08''$   
 $R = 91.52'$   
 $ARC = 119.32'$   
 $T = 69.85'$   
 $CH = 111.05'$   
 $BRB = 528^{\circ}26'48''W$

**CURVE "B"**  
 $\Delta = 30^{\circ}07'18''$   
 $R = 314.90'$   
 $ARC = 165.55'$   
 $T = 84.74'$   
 $CH = 163.65'$   
 $BRB = 550^{\circ}44'13''W$

**CURVE "C"**  
 $\Delta = 42^{\circ}54'40''$   
 $R = 314.90'$   
 $ARC = 235.84'$   
 $T = 123.76'$   
 $CH = 230.37'$   
 $BRB = 544^{\circ}20'32''W$

**CURVE "D"**  
 $\Delta = 74^{\circ}42'08''$   
 $R = 141.52'$   
 $ARC = 184.51'$   
 $T = 108.01'$   
 $CH = 171.72'$   
 $BRB = N28^{\circ}26'48''E$

**CURVE "E"**  
 $\Delta = 74^{\circ}42'03''$   
 $R = 116.52'$   
 $ARC = 151.92'$   
 $T = 88.93'$   
 $CH = 141.38'$   
 $BRB = 528^{\circ}26'51''W$

**CURVE "F"**  
 $\Delta = 42^{\circ}54'40''$   
 $R = 289.90'$   
 $ARC = 217.12'$   
 $T = 113.94'$   
 $CH = 212.08'$   
 $BRB = 544^{\circ}20'32''W$

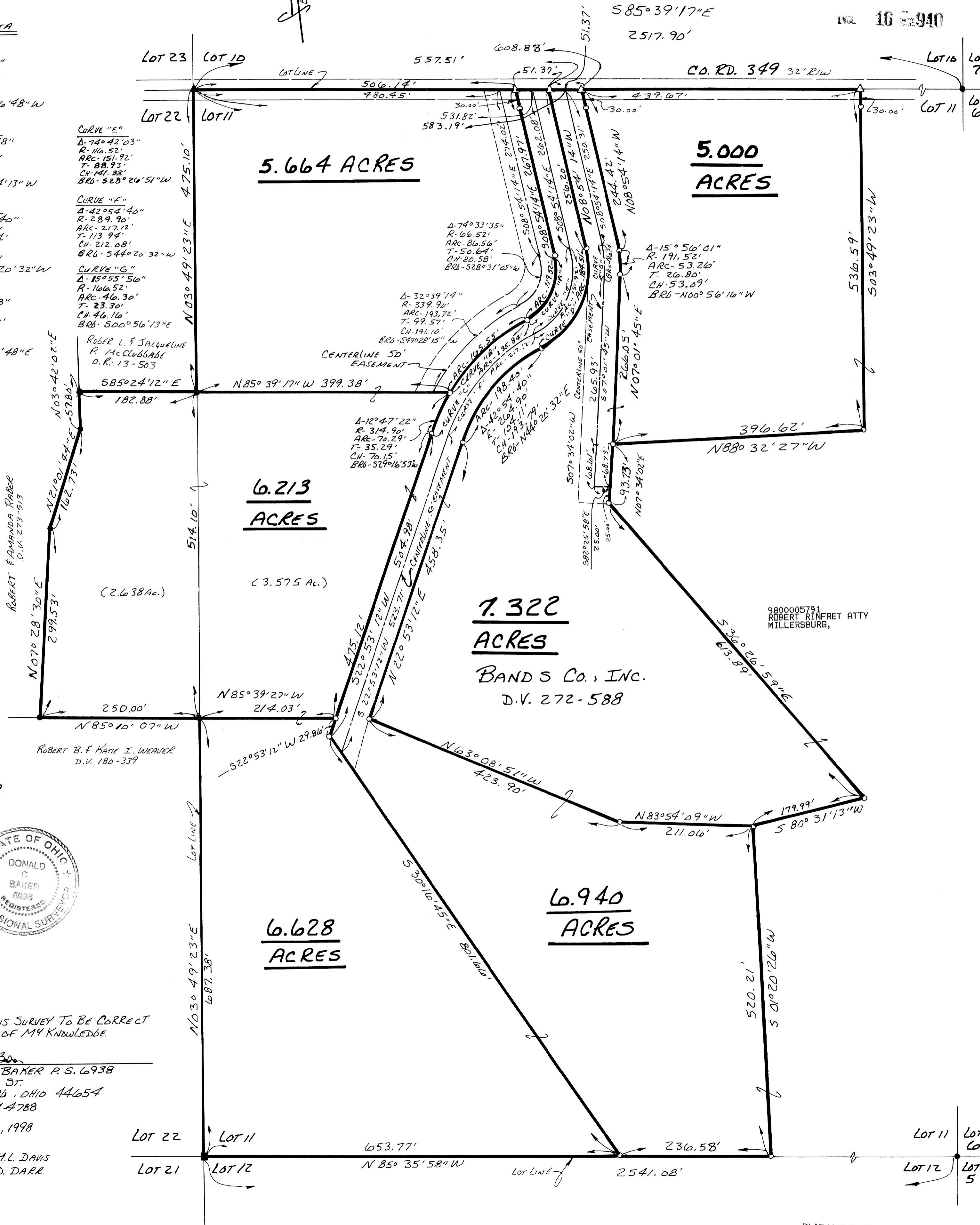
**CURVE "G"**  
 $\Delta = 15^{\circ}55'56''$   
 $R = 166.52'$   
 $ARC = 46.30'$   
 $T = 23.30'$   
 $CH = 46.16'$   
 $BRB = S00^{\circ}56'13''E$

$\Delta = 74^{\circ}33'35''$   
 $R = 66.52'$   
 $ARC = 86.56'$   
 $T = 50.64'$   
 $CH = 80.58'$   
 $BRB = 528^{\circ}31'05''W$

$\Delta = 32^{\circ}39'14''$   
 $R = 339.90'$   
 $ARC = 193.72'$   
 $T = 99.57'$   
 $CH = 191.10'$   
 $BRB = S49^{\circ}28'15''W$

$\Delta = 12^{\circ}47'22''$   
 $R = 314.90'$   
 $ARC = 70.29'$   
 $T = 35.29'$   
 $CH = 70.15'$   
 $BRB = S29^{\circ}16'53''W$

$\Delta = 15^{\circ}56'01''$   
 $R = 191.52'$   
 $ARC = 53.26'$   
 $T = 26.80'$   
 $CH = 53.09'$   
 $BRB = N00^{\circ}56'16''W$



980278  
 APPROVED FOR TRANSFER ONLY  
 NO SUBDIVISION PLAT REQUIRED  
 (O.R.C. 711.001 & 711.131)  
 Lot(s) not for building unless  
 approved by Board of Health,  
 HOLMES CO. PLANNING COMM.  
 By AO Date 11/30/98



I CERTIFY THIS SURVEY TO BE CORRECT  
 TO THE BEST OF MY KNOWLEDGE.  
Donald C. Baker  
 DONALD C. BAKER P.S. 6938  
 138 N. CLAY ST.  
 MILLERSBURG, OHIO 44654  
 PH. (330) 674-4788  
 NOVEMBER 18, 1998  
 #54398 - M.L. DAVIS  
 F.C.C. - J.D. DARR

9800005791  
 ROBERT RINFRET ATTY  
 MILLERSBURG,

**7.322**  
**ACRES**  
 BANDS CO., INC.  
 D.V. 272-588

PLAT APPROVED  
11/30/98