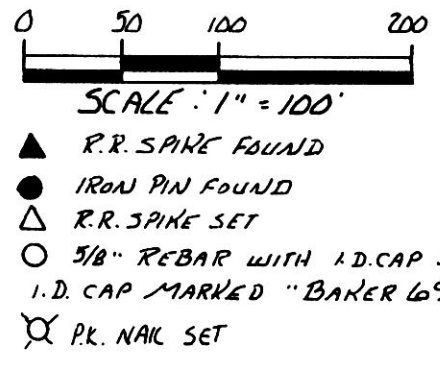
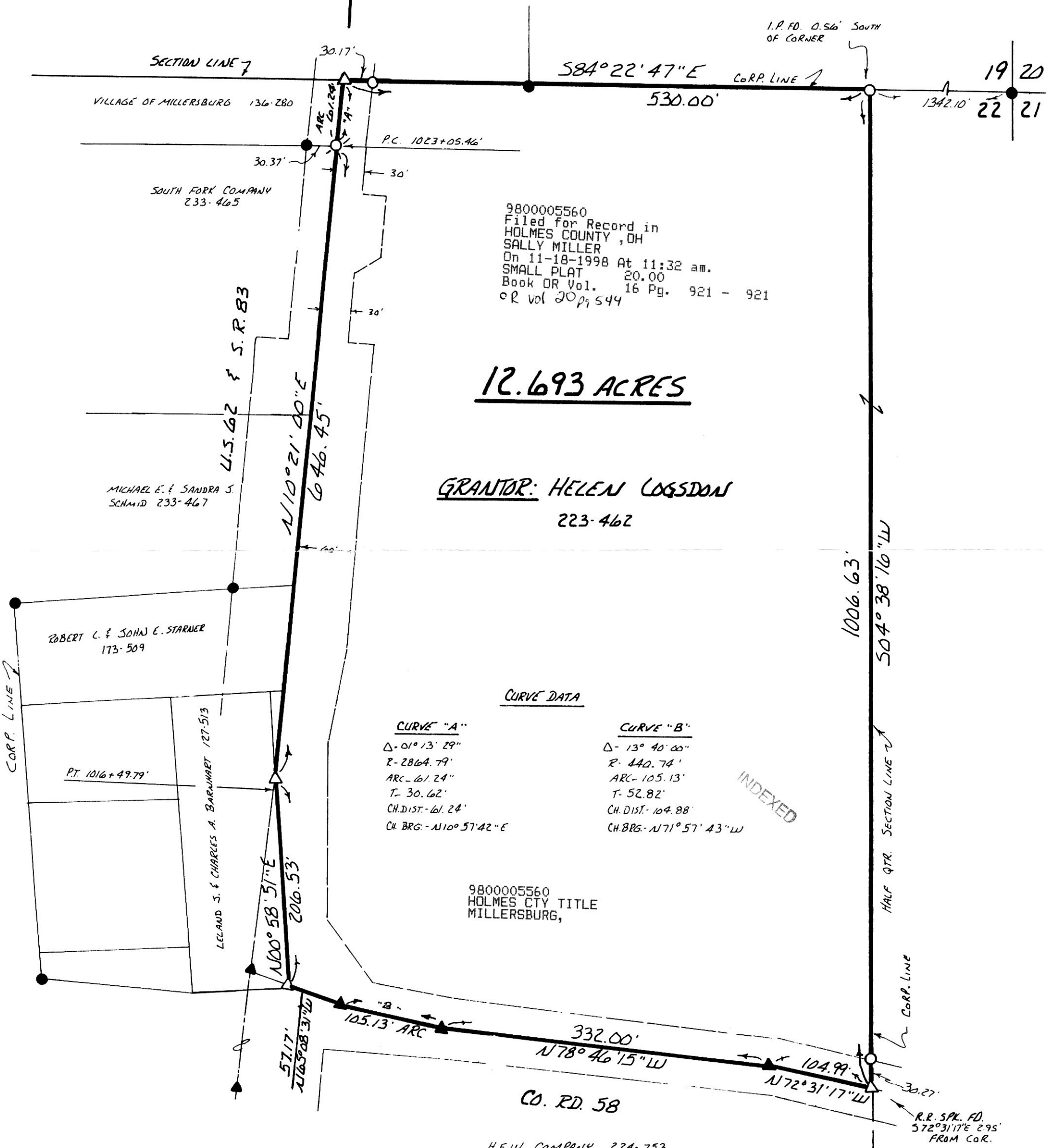


HARDY TOWNSHIP  
N.E. QTR. SEC. 22  
TWP. 9N RANGE 7W  
HOLMES COUNTY, OHIO

VILLAGE OF MILLERSBURG



REFERENCES:  
PLAT VOL. 10 PAGE 299  
PLAT VOL. 4 PAGE 38  
PLAT VOL. 11 PAGE 41 & 42  
DEED VOL. 223 PAGE 462  
  
BEARINGS FROM PLAT VOL. 2  
PAGE 193



9800005560  
Filed for Record in  
HOLMES COUNTY, OH  
SALLY MILLER  
On 11-18-1998 At 11:32 am.  
SMALL PLAT 20.00  
Book OR Vol. 16 Pg. 921 - 921  
OR vol 20 pg 544

**12.693 ACRES**

**GRANTOR: HELEN COGSDON**  
223-462

CURVE DATA

CURVE "A"

Δ - 01° 13' 29"  
R - 2864.79'  
ARC - 61.24"  
T - 30.62'  
CH. DIST. - 61.24'  
CH. BRG. - N100° 57' 42" E

CURVE "B"

Δ - 13° 40' 00"  
R - 440.74'  
ARC - 105.13'  
T - 52.82'  
CH. DIST. - 104.88'  
CH. BRG. - N71° 57' 43" W

9800005560  
HOLMES CTY TITLE  
MILLERSBURG,



I CERTIFY THIS SURVEY TO BE CORRECT  
TO THE BEST OF MY KNOWLEDGE.  
  
*Donald C. Baker*  
DONALD C. BAKER P.S. 6938  
4321 T.R. 252  
GLENMONT, OHIO

JUNE 11, 1990

PLAT APPROVED

11/17/98

REVISED OCT. 28, 1998 -  
ADDED VILLAGE OF  
MILLERSBURG, & MOVED CORP. LINE.