



980004051  
 Filed for Record in  
 HOLMES COUNTY, OH  
 SALLY MILLER  
 On 08-27-1998 At 01:32 pm.  
 PLAT MED 21.60  
 Book OR Vol. 16 Pg. 838 - 838  
 or vol 15 page 367

**NORTH**

BEARINGS EST. FROM SUR. PLAT  
 2/245 & ARE FOR ANGULAR  
 MEASUREMENT ONLY.

VILLAGE  
 OF  
 MILLERSBURG  
 254/327

VILLAGE OF MILLERSBURG  
 254/330

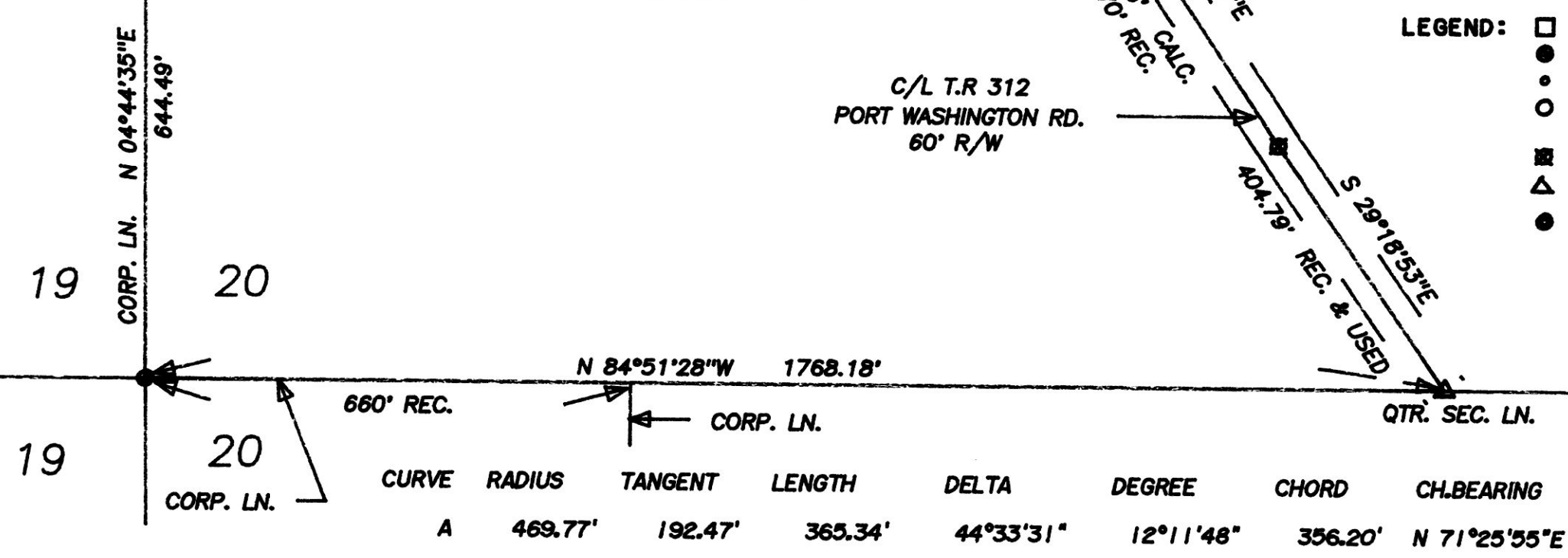
RODHE'S MARKET, INC.  
 270/953  
 (TRACT 2)

32.289 ACRES

C/L T.R. 312  
 PORT WASHINGTON RD.  
 60' R/W

REFERENCE DOCUMENTS:  
 TAX MAP  
 DEEDS AS SHOWN  
 SURVEY PLATS: 2/227  
 & 2/245

- LEGEND:
- = STONE FOUND
  - = IRON PIN/PIPE FOUND
  - = POINT-OF-DEPARTURE
  - = 5/8" X 30" RE-BAR W/I.D. CAP SET
  - = RAILROAD SPIKE SET
  - △ = R/R SPIKE FOUND
  - = CONC. MONUMENT W/ I.P. FD.



CURVE	RADIUS	TANGENT	LENGTH	DELTA	DEGREE	CHORD	CH.BEARING
A	469.77'	192.47'	365.34'	44°33'31"	12°11'48"	356.20'	N 71°25'55"E

PROPOSED ANNEXATION  
 TO THE  
 VILLAGE OF MILLERSBURG  
 HOLMES COUNTY, STATE OF OHIO

TRANSFER NOT NECESSARY  
 DATE August 27, 1998  
 AUDITOR [Signature]

APPROVED BY HOLMES COUNTY COMMISSIONERS

I HEREBY CERTIFY THAT THE HOLMES COUNTY COMMISSIONERS HAVE APPROVED THE DETACHMENT OF THIS TRACT OF LAND AS SHOWN HEREON FROM HOLMES COUNTY.

06-22-1998 [Signature]  
 DATE CHAIRMAN, COUNTY COMMISSIONERS

RESOLUTION: 06-22-98-10

APPROVED BY MILLERSBURG PLANNING COMMISSION

I HEREBY CERTIFY THAT THIS PLAT FOR ANNEXATION WAS APPROVED BY THE MILLERSBURG PLANNING COMMISSION AT A MEETING HELD ON MAY 12, 1998.

[Signature]  
 BY PRESIDENT, MILLERSBURG PLANNING COMMISSION

APPROVED BY MILLERSBURG VILLAGE COUNCIL

I HEREBY CERTIFY THAT THIS PLAT FOR ANNEXATION WAS APPROVED BY THE VILLAGE COUNCIL OF MILLERSBURG, OHIO AT A MEETING HELD ON AUGUST 24, 1998.

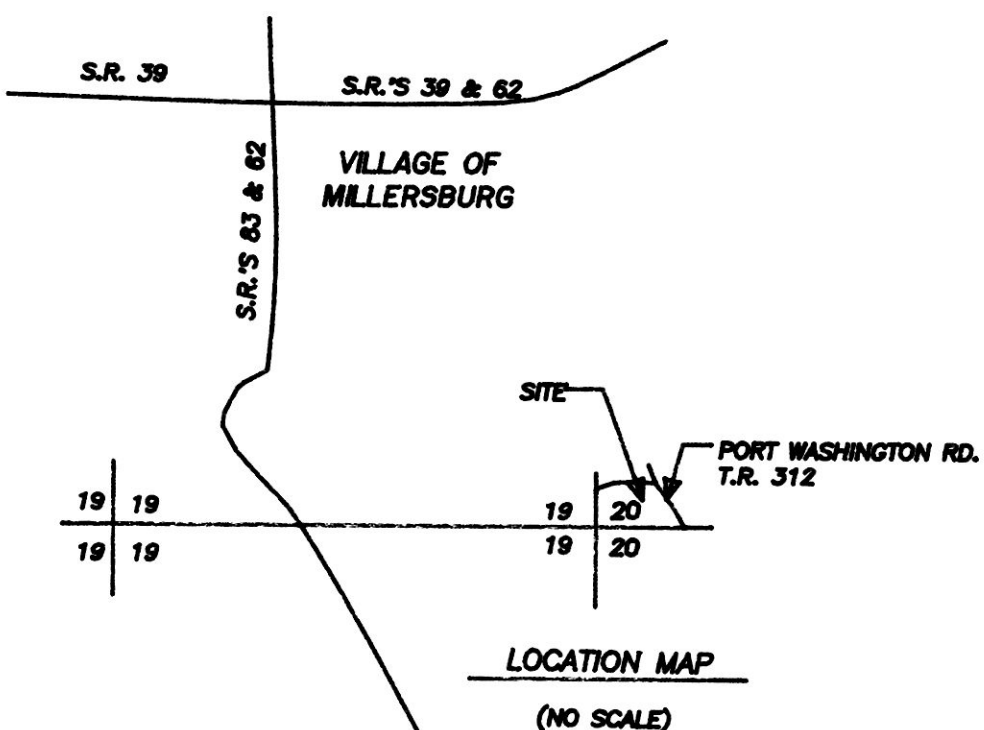
[Signature]  
 BY VILLAGE CLERK

ORDINANCE: 98-110

I CERTIFY THIS PLAT & SURVEY TO BE CORRECT TO THE BEST OF MY KNOWLEDGE:

[Signature]  
 JIM SHAMP, REG. SUR. NO. S-6088  
 OCTOBER 16, 1995: DATE

980004051  
 VILLAGE OF MILLERSBURG  
 MILLERSBURG, OH 44654



<b>HEARTLAND Surveying, Inc.</b>			
Jim Shamp 5210 T.R. 257 MILLERSBURG, OH 44654 PH: 330-674-4698			
SURVEY ANNEXATION TO THE VILLAGE OF MILLERSBURG		STATE OHIO	
COUNTY HOLMES	TWP. HARDY	RNG. 7 WEST	TWP. 9 NORTH
N.W. QTR. OF SEC. 20		940802.CRD 980225.PL1	