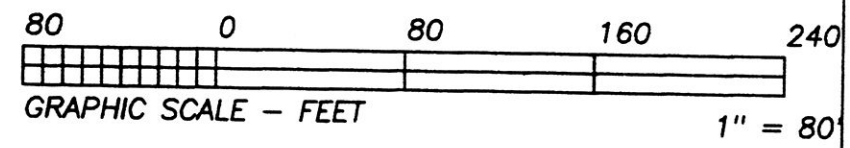


CURVE	RADIUS	TANGENT	LENGTH	DELTA	DEGREE	CHORD	CH.BEARING
A	1509.73'	94.17'	188.09'	7°08'17"	3°47'42"	187.97'	S 78°17'25"E
B	1509.73'	20.37'	40.73'	1°32'45"	3°47'42"	40.73'	S 73°56'54"E
C	1509.73'	70.03'	139.95'	5°18'41"	3°47'42"	139.90'	N 75°49'52"W
D	1509.73'	44.45'	88.87'	3°22'22"	3°47'42"	88.86'	N 80°10'23"W



* BEARINGS EST. FROM PLAT 6/53 AND ARE TO DENOTE ANGULAR MEAS. ONLY.



- LEGEND:
- = STONE FD.
 - = 5/8" RE-BAR FD. UNLESS NOTED
 - = POINT-OF-DEPARTURE
 - = 5/8" X 30" RE-BAR W/PLASTIC I.D. CAP SET
 - ⊗ = R/R SPIKE SET
 - △ = R/R SPIKE FD.
 - ⊙ = CONCRETE MONUMENT FD.

LOT SPLIT

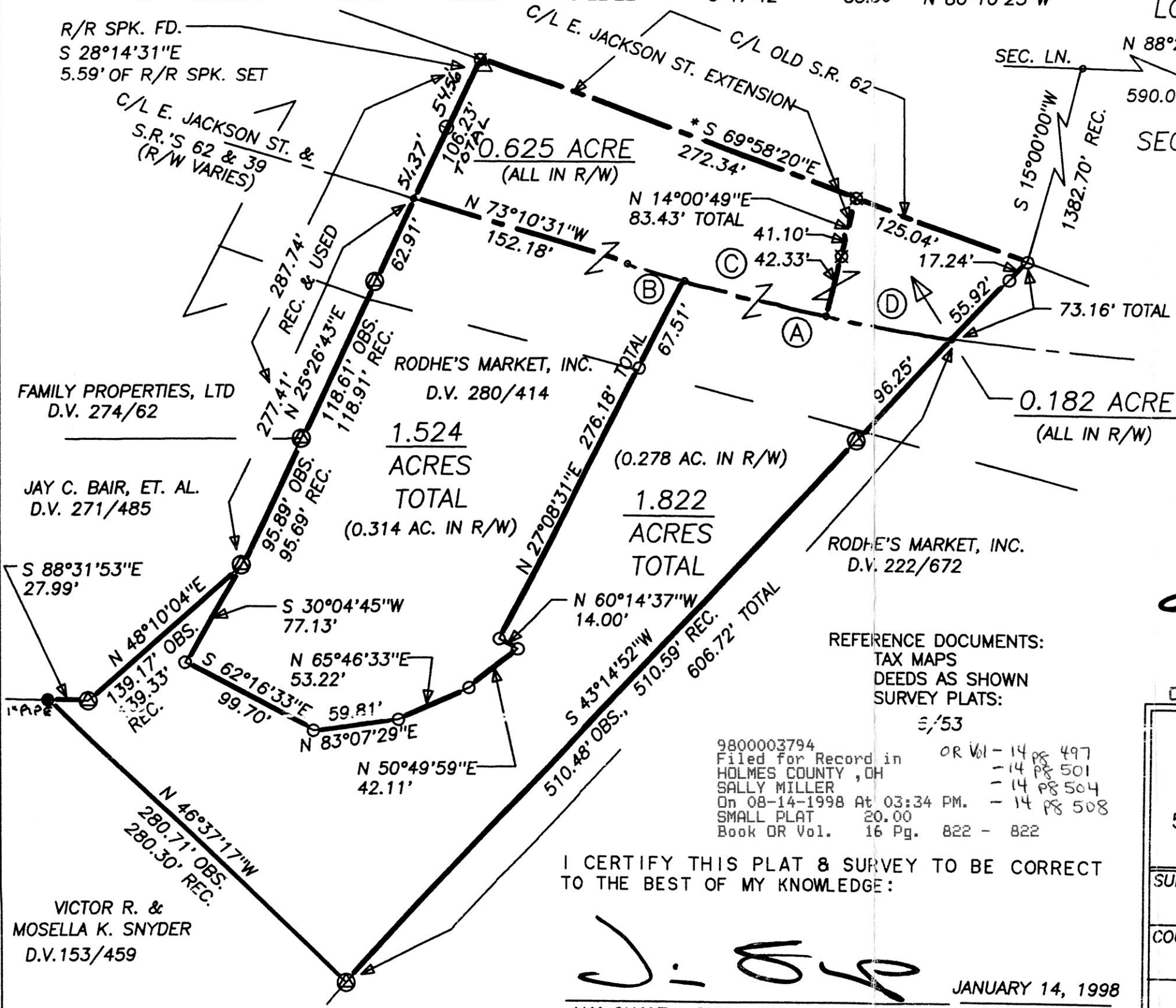
APPROVED BY THE
VILLAGE OF MILLERSBURG
PLANNING COMMISSION
NO PLAT REQUIRED

[Signature]
MILLERSBURG
PLANNING COMMISSION



DATE: MAY 19, 1998

HEARTLAND Surveying, Inc.			
5210 T.R. 257		MILLERSBURG, OH 44654	
PH: 330-674-4698			
SURVEY		STATE	
RODHE'S MARKET, INC.		OHIO	
COUNTY	TWP.	RNG.	TWP.
HOLMES	HARDY	7 W	9 N
VILLAGE OF MILLERSBURG SECTION 11			9/97 980114



REFERENCE DOCUMENTS:
TAX MAPS
DEEDS AS SHOWN
SURVEY PLATS:
E/53

9800003794
Filed for Record in OR Vol - 14 pg 497
HOLMES COUNTY, OH - 14 pg 501
SALLY MILLER - 14 pg 504
On 08-14-1998 At 03:34 PM. - 14 pg 508
SMALL PLAT 20.00
Book OR Vol. 16 Pg. 822 - 822

I CERTIFY THIS PLAT & SURVEY TO BE CORRECT TO THE BEST OF MY KNOWLEDGE:

[Signature]

JIM SHAMP, REG. SUR. NO. S-6088 DATE JANUARY 14, 1998

VICTOR R. & MOSELLA K. SNYDER
D.V.153/459

PLAT APPROVED

8/5/98 [Signature]

9800003794
LAUREL SCHMID ATTY
MILLERSBURG,