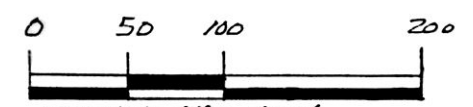


VILLAGE OF MILLERSBURG

HARDY TOWNSHIP
N.E. & N.W. QTRS. SECTION 22
T-9N; R-7W
HOLMES COUNTY, OHIO



SCALE: 1" = 100'

- P.K. NAIL FOUND
- IRON PIN FOUND
- 5/8" RE BAR WITH I.D. CAP SET
I.D. CAP MARKED "BAKER 6938"

Ⓐ VILLAGE OF MILLERSBURG 261-909

REFERENCES:

- DEED Vol. 201 PAGE 66
- " " 261 " 374
- " " 260 " 474
- " " 261 " 909

- PLAT Vol. 14 PAGE 688
- " " 14 " 324
- " " 2 " 228

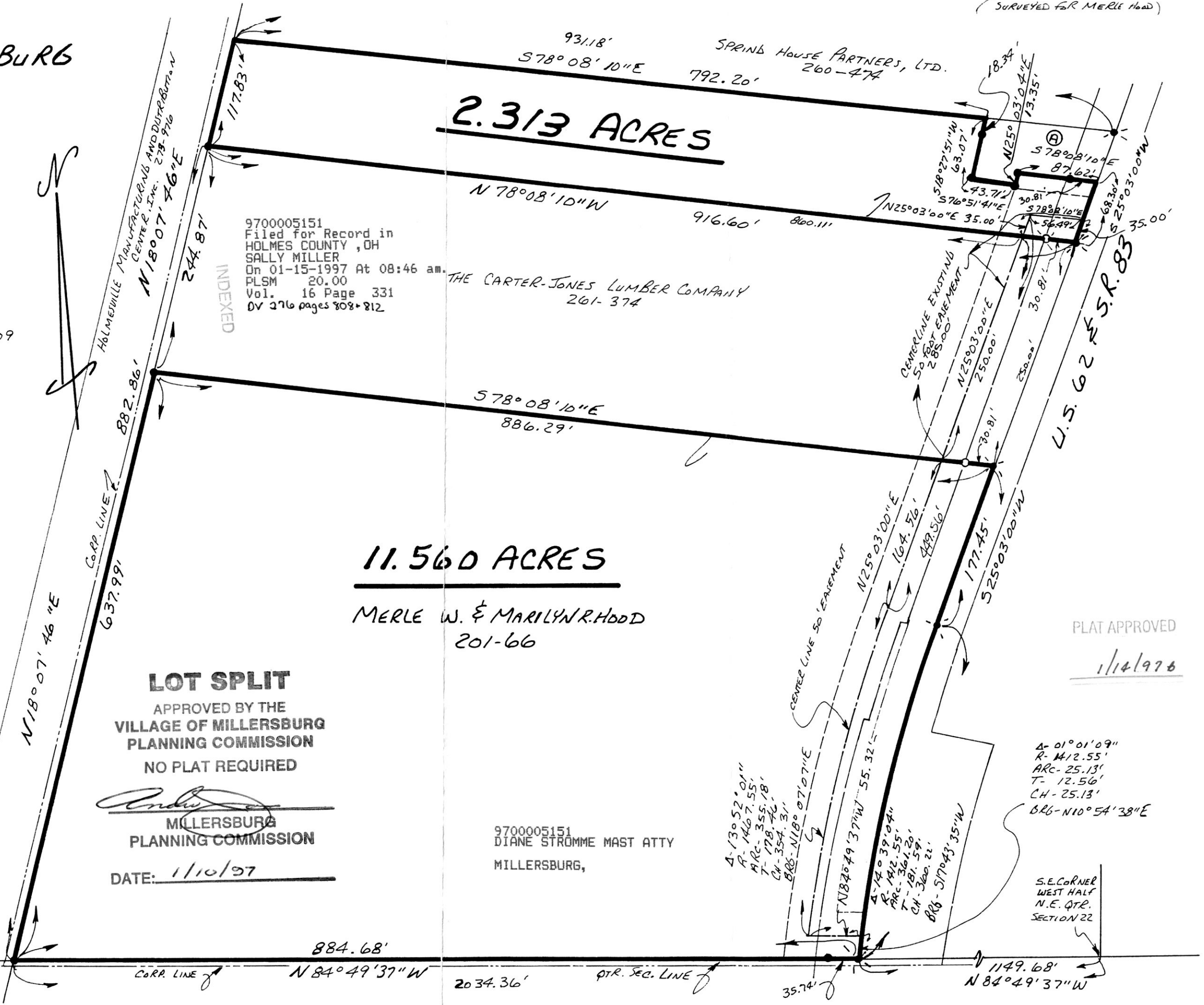
BEARINGS FROM PLAT Vol. 13 PAGE 159



I CERTIFY THIS SURVEY TO BE CORRECT TO THE BEST OF MY KNOWLEDGE.

Donald C. Baker
DONALD C. BAKER P.S. 6938
5958 T.R. 322
MILLERSBURG, OHIO 44654
PH. (330) 674-4788
DECEMBER 30, 1996

77196-MLD
FCC - F.D. BAKER



9700005151
Filed for Record in
HOLMES COUNTY, OH
SALLY MILLER
On 01-15-1997 At 08:46 am.
PLSM 20.00
Vol. 16 Page 331
DV 276 pages 808+812

THE CARTER-JONES LUMBER COMPANY
261-374

11.560 ACRES

MERLE W. & MARILYN R. HOOD
201-66

LOT SPLIT
APPROVED BY THE
VILLAGE OF MILLERSBURG
PLANNING COMMISSION
NO PLAT REQUIRED

Donald C. Baker
MILLERSBURG
PLANNING COMMISSION
DATE: 1/10/97

9700005151
DIANE STROMME MAST ATTY
MILLERSBURG,

PLAT APPROVED
1/14/97

A-130°52'01"
R-1467.55'
ARC-355.18'
T-178.74'
CH-354.31'
BRG-N18°07'07"E

A-140°39'04"
R-1412.55'
ARC-361.20'
T-181.59'
CH-360.22'
BRG-S170°43'35"W

A-01°01'09"
R-1412.55'
ARC-25.13'
T-12.56'
CH-25.13'
BRG-N10°54'38"E

S.E. CORNER
WEST HALF
N.E. QTR.
SECTION 22

U.S. 62 & S.R. 83

INDEXED