

PRAIRIE TOWNSHIP
 N.E. QTR. SECTION 15
 N.W. QTR. SECTION 14
 T-13 N; R-13 W
 HOLMES COUNTY, OHIO

INDEXED

PLAT OF CORRECTION
 (OF PLAT VOL. 14 PAGE 811)

9700007365
 Filed for Record in
 HOLMES COUNTY, OH
 SALLY MILLER
 On 06-05-1997 At 03:39 pm.
 PLMD 21.60
 Vol. 15 Page 135
 of 278 page 513

VOL 15 PAGE 135

0 100 200 400

SCALE: 1" = 200'

- IRON PIN FOUND
- 5/8" RE BAR WITH I.D. CAP SET
- I.D. CAP MARKED "BAKER 6938"

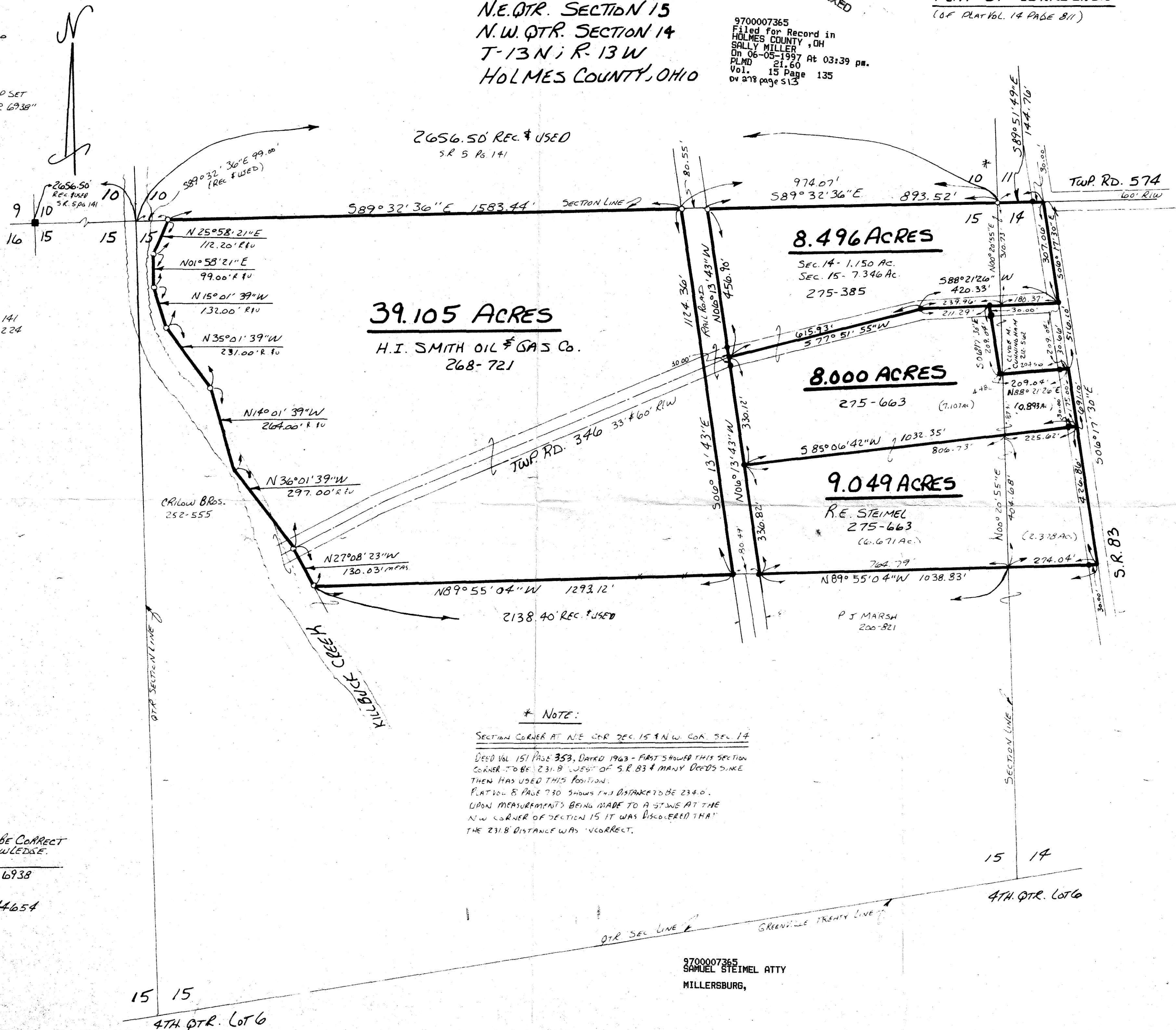
R.W. RECORD USED

REFERENCES:

DEED VOL.	PAGE
252	555
200	821
212	562
208	721
275	785
275	663

SURVEY RECORD 5 PAGE 141
 " " 5 " 224

PLAT VOL.	PAGE
8	730
14	811
8	273
9	12
6	19



* NOTE:

SECTION CORNER AT N/E COR SEC. 15 & N/W COR SEC. 14
 DEED VOL 151 PAGE 353, DATED 1963 - FIRST SHOWED THIS SECTION CORNER TO BE 231.8' WEST OF S.R. 83 & MANY DEEDS SINCE THEN HAS USED THIS POSITION.
 PLAT VOL 8 PAGE 730 SHOWS THIS DISTANCE TO BE 234.0'.
 UPON MEASUREMENTS BEING MADE TO A STONE AT THE N/W CORNER OF SECTION 15 IT WAS DISCOVERED THAT THE 231.8' DISTANCE WAS INCORRECT.



I CERTIFY THIS SURVEY TO BE CORRECT TO THE BEST OF MY KNOWLEDGE.

Donald C. Baker
 DONALD C. BAKER P.S. 6938
 138 N. CLAY ST.
 MILLERSBURG, OHIO 44654
 PH. (330) 674-4788

FEBRUARY 27, 1997

P.O. - MLD
 Fcc. - F.D. BAKER

9700007365
 SAMUEL STEIMEL ATTY
 MILLERSBURG,