

SCALE: 1" = 200'

- STONE FOUND
- IRON PIN FOUND
- 5/8" RE BAR WITH I.D. CAP SET
- I.D. CAP MARKED "BAKER 6938"

960895
 APPROVED FOR TRANSFER ONLY
 NO SUBDIVISION PLAT REQUIRED
 (O.R.C. 711.001 & 711.131)
 Lot(s) not for building unless
 approved by Board of Health,
 HOLMES CO. PLANNING COMM.
 JRM Date 12-27-96

PAIN TOWNSHIP

4TH. QTR. LOTS 28, 29 & 31

T-10 N; R-5 W

HOLMES COUNTY, OHIO

(SURVEYED FOR: THE HOLMES CO. COMMUNITY IMPROVEMENT CORP.)

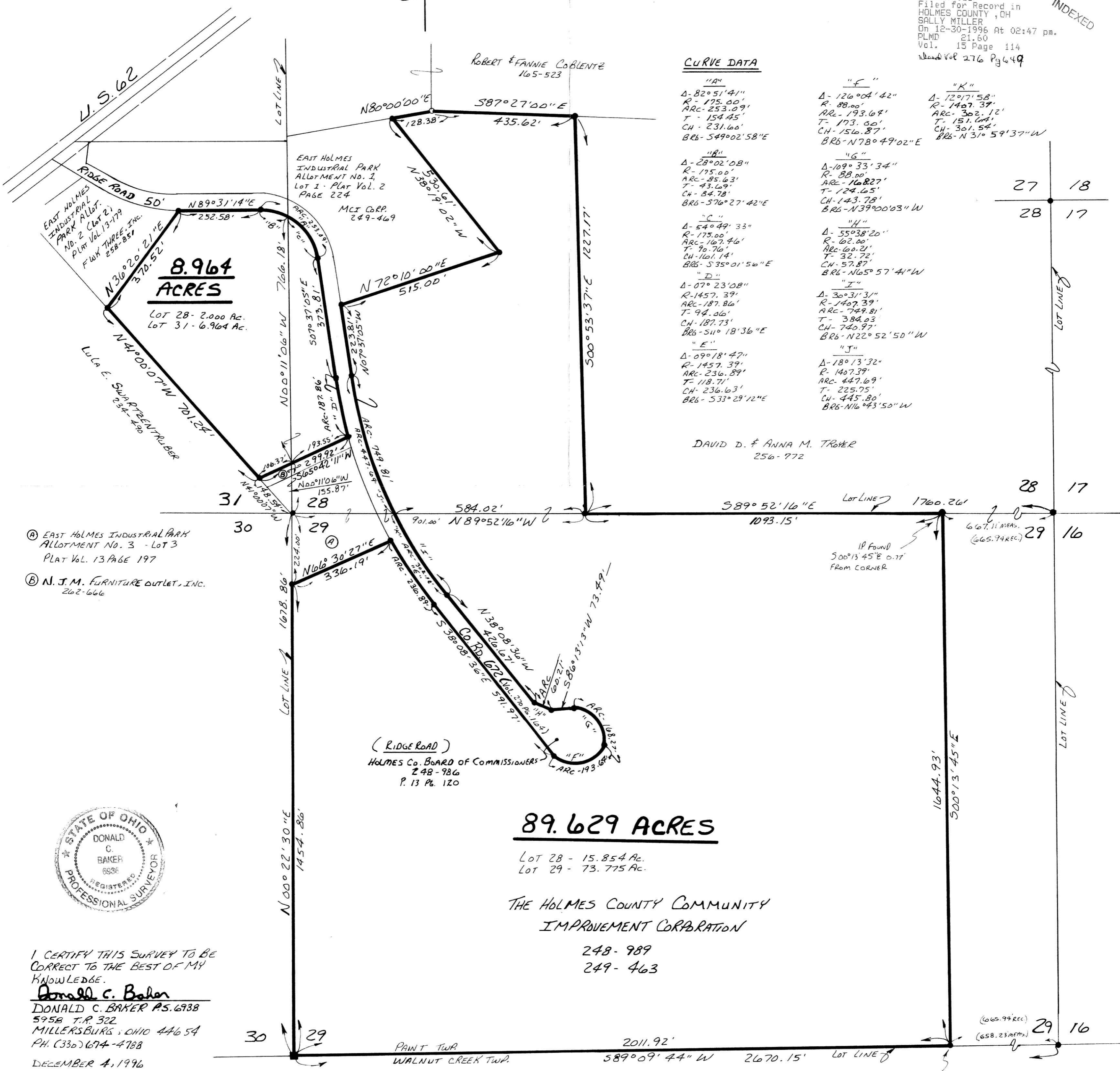
VOL 15 PAGE 114
REFERENCES:
 DEED VOL. 249 PAGE 463
 " " 258 " 851
 " " 234 " 490
 " " 249 " 469

PLAT VOL. 9 PAGE 133
 " " 10 " 705
 " " 2 " 194
 " " 13 " 131
 " " 13 " 179
 " " 13 " 197

BEARINGS FROM PLAT VOL. 13
 PAGE 120

9600004958
 Filed for Record in
 HOLMES COUNTY, OH
 SALLY MILLER
 ON 12-30-1996 At 02:47 pm.
 PLMD 21,60
 Vol. 15 Page 114
 Deed Vol 276 Pg 449

INDEXED



CURVE DATA

"A"	"F"	"K"
Δ-82°51'41" R-175.00' ARC-253.09' T-154.45' CH-231.60' BR6-549°02'58"E	Δ-126°04'42" R-88.00' ARC-193.69' T-173.60' CH-156.87' BR6-N78°49'02"E	Δ-120°17'58" R-1407.39' ARC-302.12' T-151.64' CH-301.54' BR6-N31°59'37"W
Δ-28°02'08" R-175.00' ARC-85.63' T-43.69' CH-84.78' BR6-576°27'42"E	Δ-109°33'34" R-88.00' ARC-126.827' T-124.65' CH-143.78' BR6-N39°00'03"W	
Δ-54°49'33" R-175.00' ARC-167.46' T-90.76' CH-161.14' BR6-S35°01'56"E	Δ-55°38'20" R-62.00' ARC-60.21' T-32.72' CH-57.87' BR6-N65°57'41"W	
Δ-07°23'08" R-1457.39' ARC-187.86' T-94.06' CH-187.73' BR6-S11°18'36"E	Δ-30°31'31" R-1407.39' ARC-749.81' T-384.23' CH-740.97' BR6-N22°52'50"W	
Δ-09°18'47" R-1457.39' ARC-236.89' T-118.71' CH-236.63' BR6-S33°29'12"E	Δ-18°13'32" R-1407.39' ARC-447.69' T-225.75' CH-445.80' BR6-N16°43'50"W	

DAVID D. & ANNA M. TRAYER
 256-972

- Ⓐ EAST HOLMES INDUSTRIAL PARK ALLOTMENT NO. 3 - LOT 3 PLAT VOL. 13 PAGE 197
- Ⓑ N. J. M. FURNITURE OUTLET, INC. 262-666

(RIDGE ROAD)
 HOLMES CO. BOARD OF COMMISSIONERS
 248-986
 P. 13 Pg. 120

89.629 ACRES

Lot 28 - 15.854 Ac.
 Lot 29 - 73.775 Ac.

THE HOLMES COUNTY COMMUNITY
 IMPROVEMENT CORPORATION

248-989
 249-463



I CERTIFY THIS SURVEY TO BE CORRECT TO THE BEST OF MY KNOWLEDGE.

Donald C. Baker
 DONALD C. BAKER P.S. 6938
 5958 T.R. 322
 MILLERSBURG, OHIO 44654
 PH. (330) 674-4788
 DECEMBER 4, 1996

69396-MLD
 FCC - FD BAKER

9600004958
 LAUREL HINES ATTY
 MILLERSBURG,

PLAT APPROVED

12/30/96