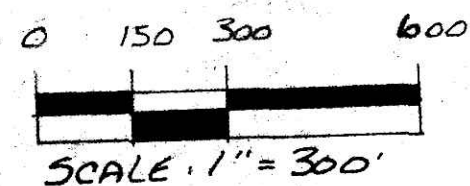


RICHLAND TOWNSHIP S.E. & S.W. QTRS. SECTION 8 N.W. & S.W. QTRS. SECTION 9 T-8N; R-9W HOLMES COUNTY, OHIO

9600002208
Filed for Record in
HOLMES COUNTY, OH
SALLY MILLER
On 07-12-1996 At 02:58
PLMD 21.60
Vol. 15 Page 96
dv 274pg 260



- STONE FOUND
- IRON PIN FOUND
- 5/8" RE BAR WITH I.D. CAP SET
- I.D. CAP MARKED "BAKER 6938"

REFERENCES:

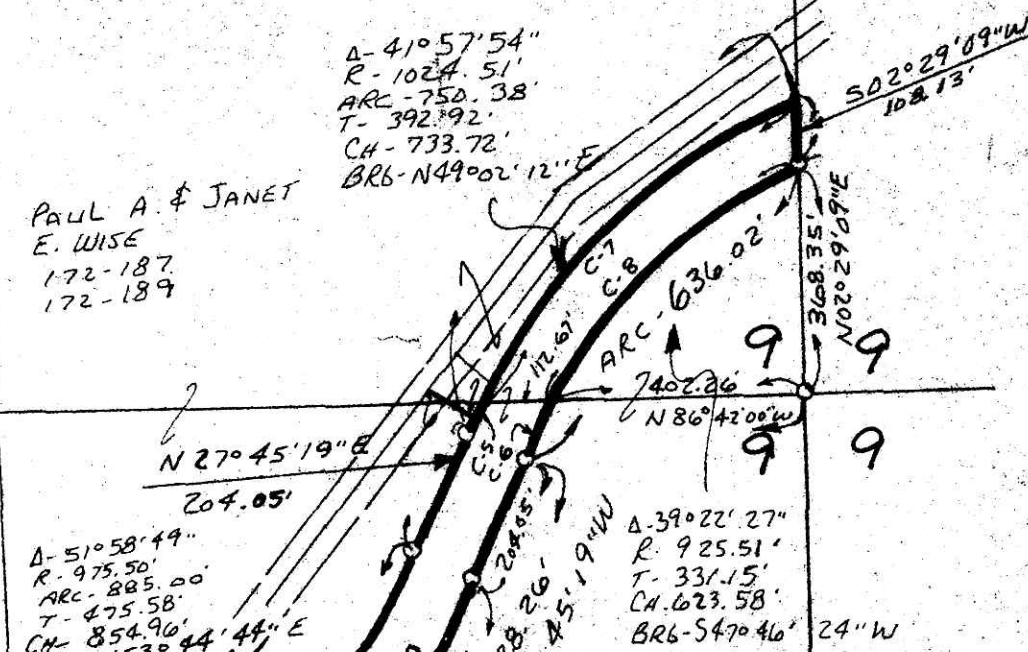
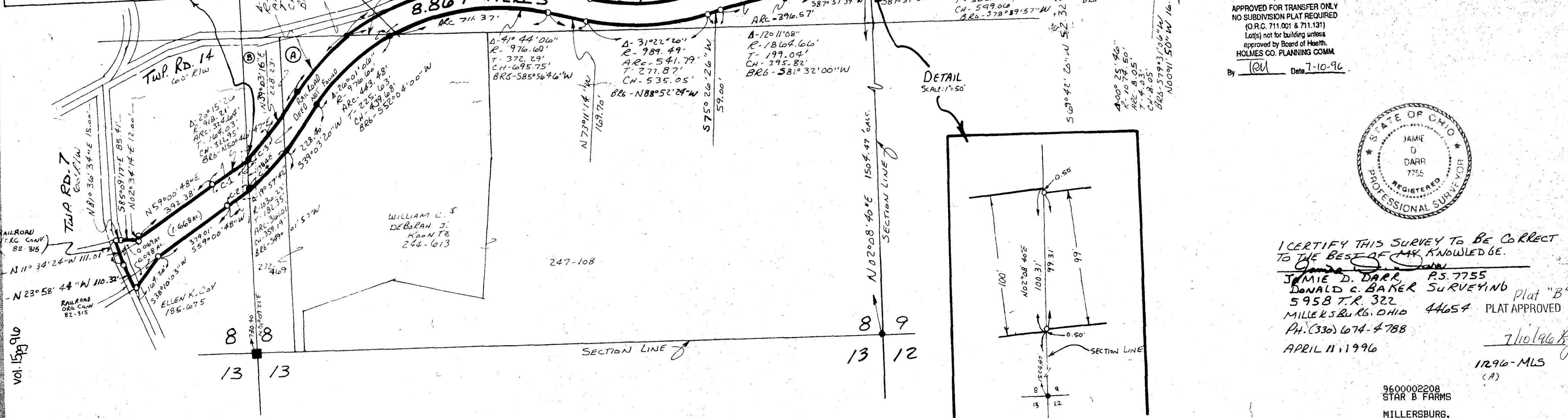
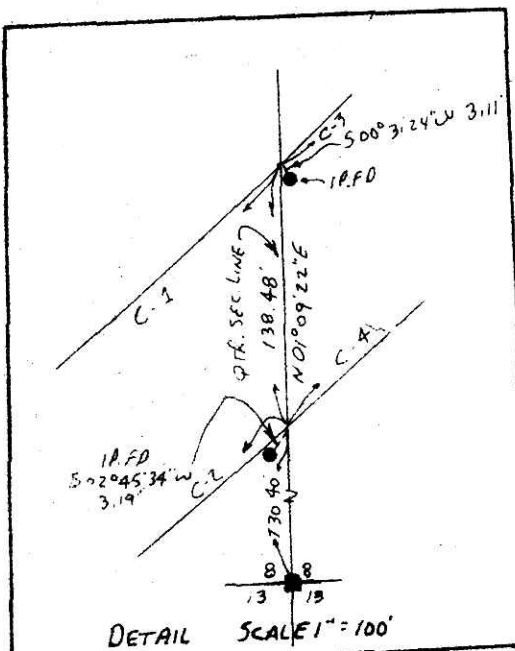
- DEED VOL. 178 PAGE 312
" " 263 " 344
" " 262 " 914
" " 244 " 613
" " 264 " 683
" " 264 " 260
" " 172 " 189

BEARINGS FROM PLAT VOL. 12 PAGE 2

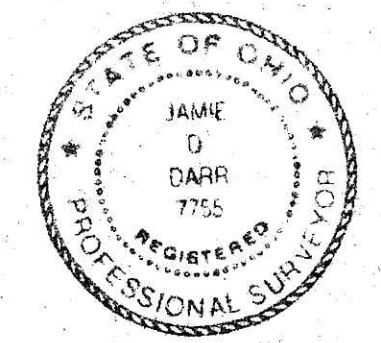
CURVE	Δ	RADIUS	ARC	TANGENT	CH	CH BRG
C-1	12° 13' 28"	918.21'	195.91'	98.33'	195.54'	N 54° 47' 46" E
C-2	6° 43' 21"	1036.22'	121.61'	60.87'	121.54'	S 55° 37' 07" W
C-3	8° 01' 58"	918.21'	128.73'	64.41'	128.63'	N 44° 40' 03" E
C-4	13° 14' 15"	1036.22'	239.46'	120.24'	238.81'	S 45° 46' 12" W
C-5	2° 13' 01"	1024.51'	39.64'	19.82'	39.64'	N 29° 09' 41" E
C-6	5° 21' 06"	925.51'	86.42'	43.24'	86.39'	S 30° 45' 41" W
C-7	39° 24' 53"	1024.51'	710.74'	370.34'	696.57'	N 50° 08' 41" E
C-8	34° 01' 27"	925.51'	549.60'	288.17'	541.56'	S 50° 26' 54" W

- Ⓐ ELMER A. & EILEEN K. SCHLAUCH 263-394
- Ⓑ ELMER A. & EILEEN K. SCHLAUCH 262-914
BURBESS B. & LAURA L. JONES L.E.S.T
- Ⓒ COLE EXCAVATORS, INC. 178-312

SW QTR SECTION 8 - 1.835 AC.
S.E. QTR SECTION 8 - 7.032 AC.
SW QTR SECTION 9 - 6.834 AC.
N.W. QTR SECTION 9 - 1.433 AC.



960135
APPROVED FOR TRANSFER ONLY
NO SUBDIVISION PLAT REQUIRED
(O.R.C. 711.001 & 711.131)
Lot(s) not for building unless
approved by Board of Health,
HOLMES CO. PLANNING COMM.
By JDM Date 7-10-96



I CERTIFY THIS SURVEY TO BE CORRECT
TO THE BEST OF MY KNOWLEDGE.
Jamie D. Barr
JAMIE D. BARR, P.S. 7755
DONALD C. BAKER SURVEYING Plat "B"
5958 T.R. 322
MILLETSBURG, OHIO 44654 PLAT APPROVED
PH. (330) 674-4788
APRIL 11, 1996
11296-MLS
(A)