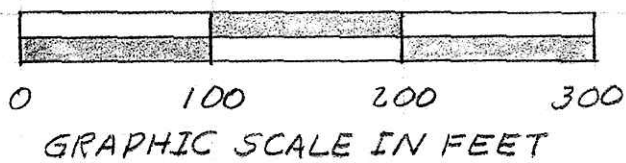
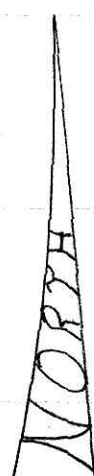


P.O.B. is the following from a stone found at the N.W. corner of the S.E. 1/4, Sec. 8, T8N, R5W:
 584°59'02"E 1504.64', 56°23'37"W 258.63',
 529°37'36"W 83.96', 552°51'35"W 170.73',
 562°46'12"W 105.68', 572°40'48"W 80.62',
 and 550°57'10"W 100.77'.

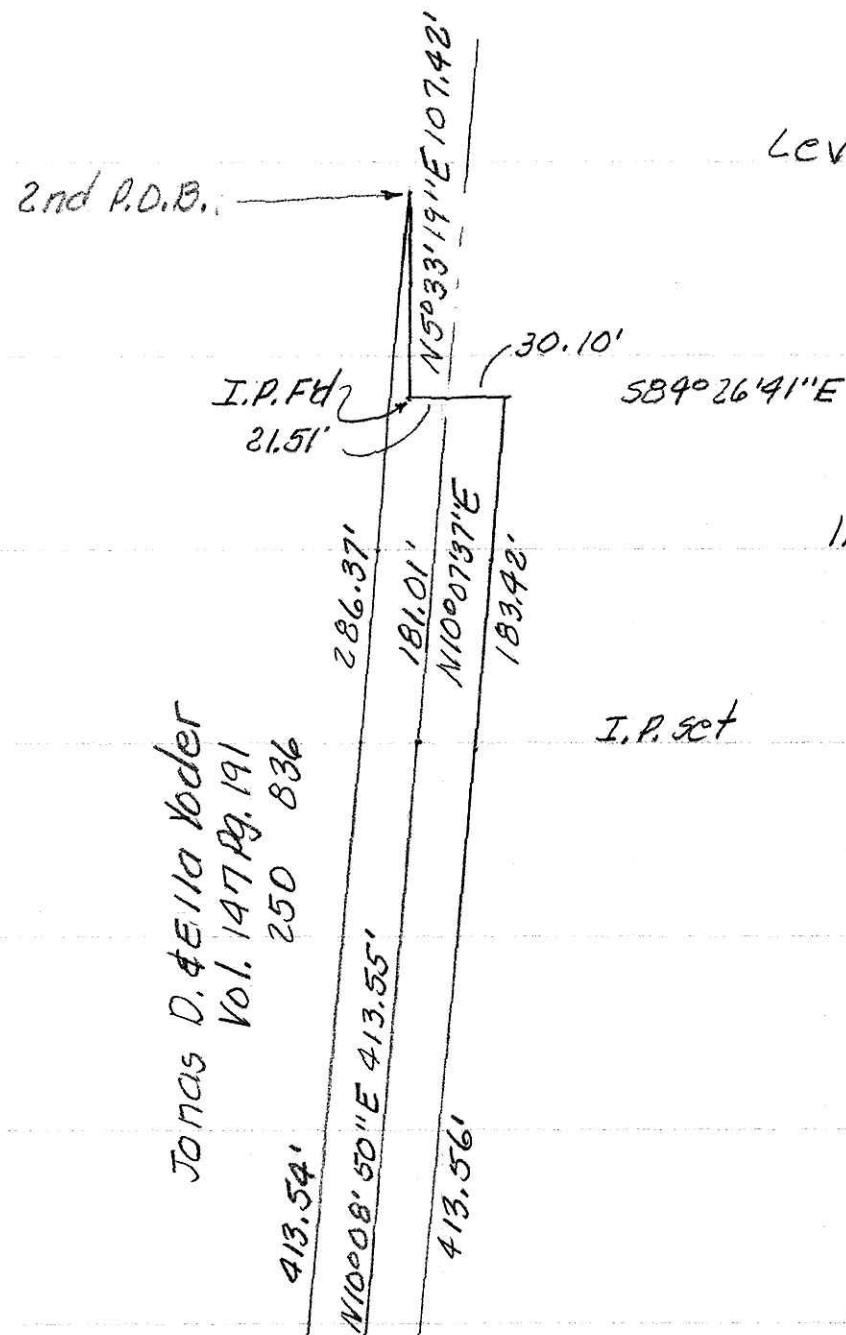
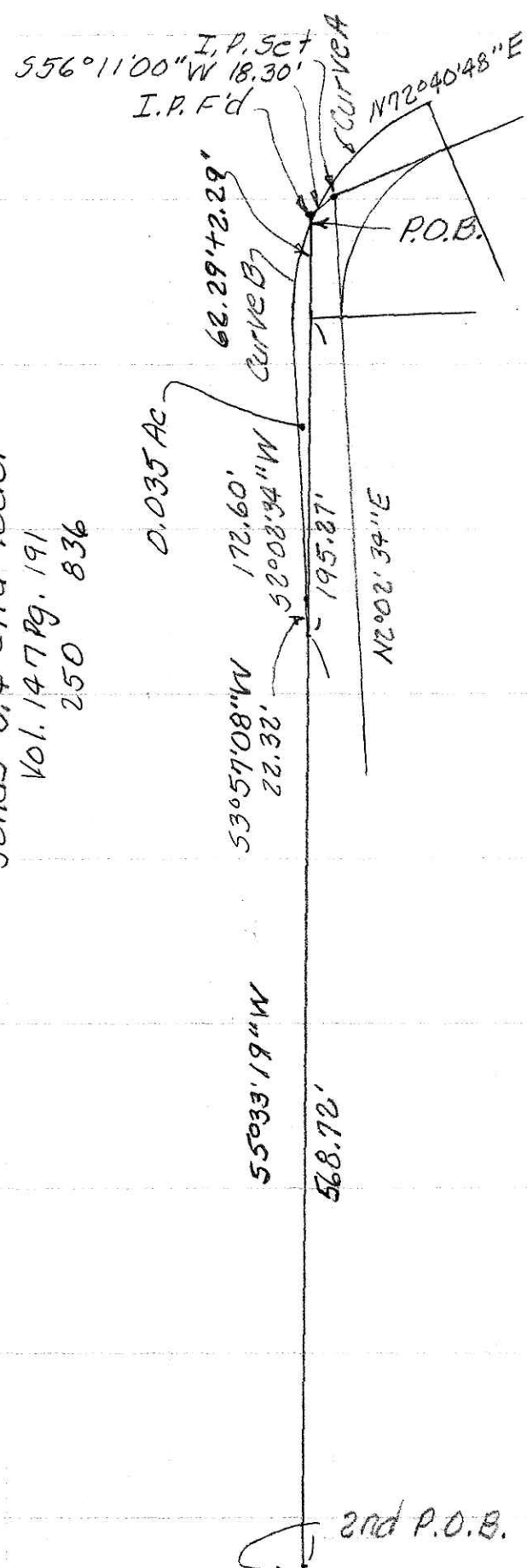
Curve
 $\Delta = 70^\circ 38' 14''$
 $R = 106.10', D = 54^\circ 00' 00''$
 $T = 75.17', L = 130.81'$
 $LC = 122.68' S 37^\circ 21' 41'' W$

Curve A
 $\Delta = 43^\circ 27' 16''$
 $R = 136.10', D = 42^\circ 05' 54''$
 $T = 54.24', L = 103.22'$
 $LC = 100.77' S 50^\circ 57' 10'' W$

Curve B
 $\Delta = 27^\circ 10' 58''$
 $R = 136.10', D = 42^\circ 05' 54''$
 $T = 32.90', L = 64.57'$
 $LC = 63.97' S 15^\circ 38' 03'' W$



Jonas D. & Ella Yoder
 Vol. 147 Pg. 191
 250 836



Levi S. Yoder
 Vol. 147 Pg. 240
 260 187

1.995 Ac.

0.035 Ac
 1.995

I.P. set 2.030 Ac. part of Vol. 147 Pg. 240
 260 187

Curve (18)

$\Delta = 22^\circ 09' 11''$
 $R = 358.10', D = 16^\circ 00' 00''$
 $T = 70.10', L = 138.46'$
 $LC = 137.60' S 21^\circ 13' 26'' W$

Inside Curve	Outside Curve
$\Delta = 22^\circ 09' 11''$	$\Delta = 22^\circ 09' 11''$
$R = 328.10', D = 17^\circ 27' 46''$	$R = 388.10', D = 14^\circ 45' 47''$
$T = 64.23', L = 126.86'$	$T = 75.98', L = 150.06'$
$LC = 126.07' S 21^\circ 13' 26'' W$	$LC = 149.12' N 21^\circ 13' 26'' E$

Curve 19

$\Delta = 65^\circ 45' 06''$
 $R = 146.91', D = 39^\circ 00' 00''$
 $T = 94.95', L = 168.59'$
 $LC = 159.49' N 65^\circ 10' 34'' E$

Inside Curve

$\Delta = 65^\circ 45' 06''$
 $R = 116.91', D = 49^\circ 00' 30''$
 $T = 75.56', L = 134.16'$
 $LC = 126.98' N 65^\circ 10' 34'' E$

S.W. corner
 S.E. 1/4 No mark
 found, set by judgement in lane

59.84' N 64° 13' 45" E

164.83' N 81° 56' 53" W

N 25° 46' 15" W

250.166'

30.00' ± 8.55' = 38.55'
 592.64' P.K. set S.R. 557'

309.25'

1st P.O.B.

N 84° 04' 34" W 1781.44'

stone F'd at S.E. corner
 S.E. 1/4 Sec. 8, T8N, R5W
 Clark Twp., Hol. Co., O.

We Jonas D. & Ella Yoder do hereby dedicate this tract of land for a public road to serve the general public and the community in general.

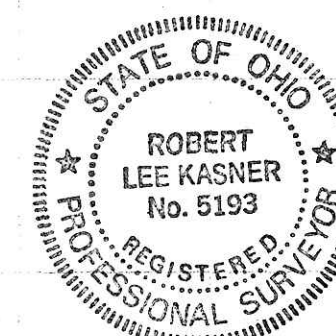
CERTIFICATION OF ACCEPTANCE AND DEDICATION
 This public road as shown hereon and described in Exhibit G is hereby approved and accepted for dedication by the Board of Holmes County Commissioners.

Resolution 09-11-95-4 Date Sept 11, 1995

John W. Barber
Paul
Leah W. Miller

Known as part of the S.E. 1/4 of Sec. 8, T8N, R5W of Clark Twp., Hol. Co., Ohio

Robert L. Kasner P.S. 5193
 P.E. 28820
 2122194



REC'D AT 7:28 o'clock A.M. RECORDED FEE No. 11
 JAN 11 '96 JAN 12 '96
 Direct VOL 15 PAGE 77 SALLY MILLER RECORDED
 BY 271 pg 614

TRANSFER NOT NECESSARY
 DATE 1-9-96
 AUDITOR Richard A. Brown NB

PLAT APPROVED

9/11/95
 4 of 4