

EXHIBIT F

196181

Vol 15 page 76

Stone Fd N.W. corner
S.E. 1/4 Sec. 8, T8N, R5W

Levi S. Yoder
Vol. 234 Pg. 157

584°59'02"E 1,534.65'

300' 30.01'

260 187

Curve (11)
Δ = 46° 27' 58"
R = 136.42', D = 42° 00' 00"
T = 58.56', L = 110.63'
LC = 107.63' N29° 37' 36"E

Inside Curve
Δ = 46° 27' 58"
R = 106.42', D = 53° 50' 22"
T = 45.68', L = 86.31'
LC = 83.96' N29° 37' 36"E

Outside Curve
Δ = 46° 27' 58"
R = 166.42', D = 34° 25' 42"
T = 71.44', L = 134.96'
LC = 131.30' N29° 37' 36"E

Levi S. Yoder
Vol 147 Pg. 240
260 187

Curve (12)
Δ = 19° 49' 13"
R = 337.03', D = 17° 00' 00"
T = 58.88', L = 116.59'
LC = 116.01' N62° 46' 12"E

Inside Curve
Δ = 19° 49' 13"
R = 307.03', D = 18° 39' 41"
T = 53.64', L = 106.21'
LC = 105.68' N62° 46' 12"E

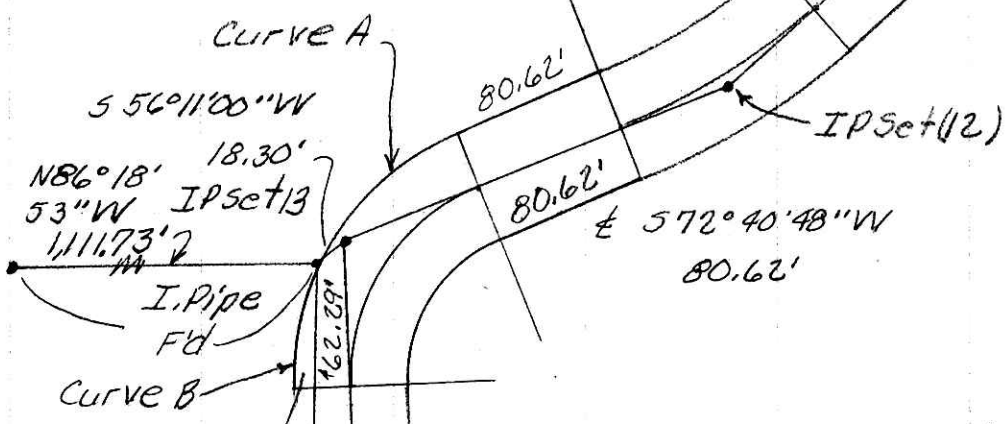
Outside Curve
Δ = 19° 49' 13"
R = 367.03', D = 15° 36' 38"
T = 64.12', L = 126.97'
LC = 126.33' N62° 46' 12"E

Curve (13)
Δ = 70° 38' 14"
R = 106.10', D = 54° 00' 00"
T = 75.17', L = 130.81'
LC = 122.68' N37° 21' 41"E

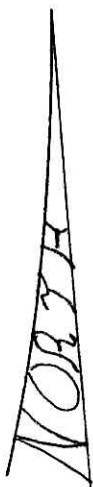
Inside Curve
Δ = 70° 38' 14"
R = 76.10', D = 75° 17' 25"
T = 53.92', L = 93.82'
LC = 87.99' N37° 21' 41"E

Outside Curve A
Δ = 43° 27' 16"
R = 136.10', D = 42° 05' 54"
T = 54.24', L = 103.22'
LC = 100.77' N50° 57' 10"E

Outside Curve B
Δ = 27° 10' 58"
R = 136.10', D = 42° 05' 54"
T = 32.90', L = 64.57'
LC = 63.97' N15° 38' 03"E



Note: This area is not included in this tract



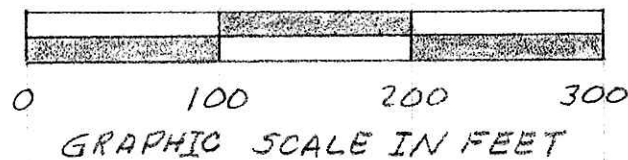
5 5° 33' 19" W
871.41'

2,399 acres
part of Vol. 147 Pg. 240
260 187

We Levi S. Yoder do
hereby dedicate this tract of land for a public road
to serve the general public and the community in
general.

CERTIFICATION OF ACCEPTANCE AND DEDICATION
This public road as shown hereon and described in
EXHIBIT E is hereby approved and accepted for ded-
ication by the Board of Commissioners of Holmes County Commissioners.
Resolution 09-11-95-4 Date Sept 11, 1995

John W. Baker
Robert L. Kasner



Known as part of the
S.E. 1/4 Sec. 8, T8N, R5W
of Clark Twp., Hol. Co., Ohio

Robert L. Kasner P.S. 5193
P.E. 28820
2122195



PLAT APPROVED

REC'D
AT 9:11 o'clock AM
JAN 11 '96

RECORDED
FEE \$0.00
JAN 12 '96

INDEXED

TRANSFER NOT NECESSARY
DATE 1-9-96
AUDITOR Richard A. Straven NB

Vol 15 PAGE 76
of 271 pg 614

9/10/95
3 of 4